



[Go to Product page](#)

Datasheet for ABIN1679065

anti-CCT8 antibody (AA 248-497)

2 Images

Overview

Quantity:	100 µg
Target:	CCT8
Binding Specificity:	AA 248-497
Reactivity:	Human
Host:	Rabbit
Clonality:	Polyclonal
Conjugate:	This CCT8 antibody is un-conjugated
Application:	Western Blotting (WB), Immunohistochemistry (IHC)

Product Details

Immunogen:	Recombinant fusion protein containing a sequence corresponding to amino acids 248-497 of human CCT8 (NP_001269837.1).
Sequence:	DMALHYANKY NIMLVRLNSK WDLRRLCKTV GATALPRLTP PVLEEMGHCD SVYLSEVGDT QVVVFKHEKE DGAISTIVLR GSTDNLMDI ERAVDDGVNT FKVLRDKRL VPGGATEIE LAKQITSYGE TCPGLEQYAI KKFAEAFEAI PRALAENSGV KANEVISKLY AVHQEGNKNV GLDIEAEVPA VKDMLEAGIL DTYLGKYWAI KLATNAAVTV LRVDQIIMAK PAGGPKPPSG KKDWDDDDQND
Isotype:	IgG
Cross-Reactivity:	Human, Mouse, Rat
Characteristics:	Polyclonal Antibodies
Purification:	Affinity purification

Target Details

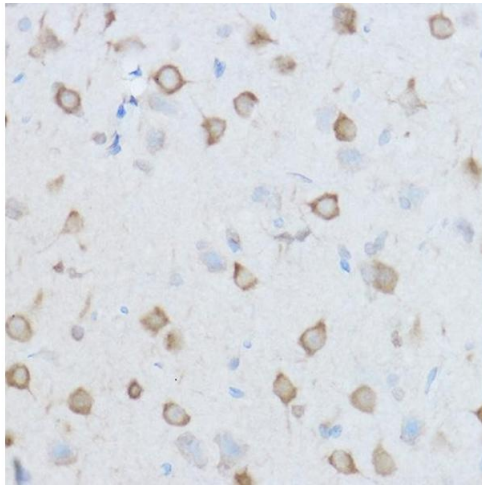
Target:	CCT8
Alternative Name:	CCT8 (CCT8 Products)
Background:	This gene encodes the theta subunit of the CCT chaperonin, which is abundant in the eukaryotic cytosol and may be involved in the transport and assembly of newly synthesized proteins. Alternative splicing results in multiple transcript variants of this gene. A pseudogene related to this gene is located on chromosome 1.,CCT8,C21orf112,Cctq,D21S246,PRED71,Signal Transduction,CCT8
Molecular Weight:	51 kDa/57 kDa/59 kDa
Gene ID:	10694
UniProt:	P50990

Application Details

Application Notes:	WB,1:1000 - 1:2000,IHC,1:50 - 1:200
Restrictions:	For Research Use only

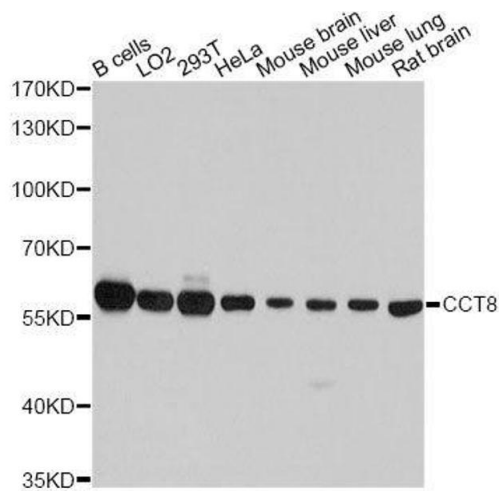
Handling

Buffer:	PBS with 0.02 % sodium azide,50 % glycerol, pH 7.3.
Preservative:	Sodium azide
Precaution of Use:	This product contains Sodium azide: a POISONOUS AND HAZARDOUS SUBSTANCE which should be handled by trained staff only.
Storage:	-20 °C
Storage Comment:	Store at -20°C. Avoid freeze / thaw cycles.



Immunohistochemistry

Image 1. Immunohistochemistry of paraffin-embedded Mouse brain using CCT8 antibody (ABIN1679065, ABIN3018943, ABIN3018944 and ABIN6220637) at dilution of 1:100 (40x lens). Perform high pressure antigen retrieval with 10 mM citrate buffer pH 6.0 before commencing with IHC staining protocol.



Western Blotting

Image 2. Western blot analysis of extracts of various cell lines, using CCT8 antibody.