



Datasheet for ABIN1679201
anti-CHAF1A antibody (AA 1-200)



[Go to Product page](#)

2 Images

Overview

Quantity:	100 µg
Target:	CHAF1A
Binding Specificity:	AA 1-200
Reactivity:	Human
Host:	Rabbit
Clonality:	Polyclonal
Conjugate:	This CHAF1A antibody is un-conjugated
Application:	Western Blotting (WB)

Product Details

Immunogen:	Recombinant fusion protein containing a sequence corresponding to amino acids 1-200 of human p150 CAF1 (NP_005474.2).
Sequence:	MLEEECGAP GARGAATAMD CKDRPAFPVK KLIQARLPFK RLNLVPKGKA DDMSDDQGTS VQSKSPDLEA SLDTLENNCH VGSDIDFRPK LVNGKGPLDN FLRNRIETSI GQSTVIIDL EDSNEQPDSL VDHKNLNSEA SPSREAINGQ REDTGDQQGL LKAIQNDKLA FPGETLSDIP CKTEEEGVGC GGAGRRGDSQ
Isotype:	IgG
Cross-Reactivity:	Human
Characteristics:	Polyclonal Antibodies
Purification:	Affinity purification

Target Details

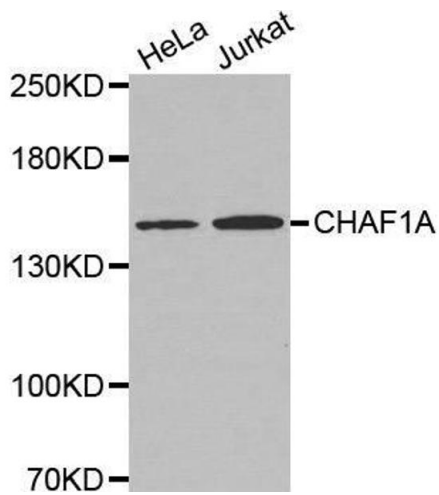
Target:	CHAF1A
Alternative Name:	CHAF1A (CHAF1A Products)
Background:	Chromatin assembly factor I (CAF1) is a nuclear complex consisting of p50, p60 (CHAF1B, MIM 601245), and p150 (CHAF1A) subunits that assembles histone octamers onto replicating DNA in vitro (Kaufman et al., 1995 [PubMed 7600578]).[supplied by OMIM, Mar 2008],CHAF1A,CAF-1,CAF1,CAF1B,CAF1P150,P150,Epigenetics & Nuclear Signaling,Chromatin Remodeling,CHAF1A
Molecular Weight:	84 kDa/88 kDa/106 kDa
Gene ID:	10036
UniProt:	Q13111

Application Details

Application Notes:	WB,1:500 - 1:2000
Restrictions:	For Research Use only

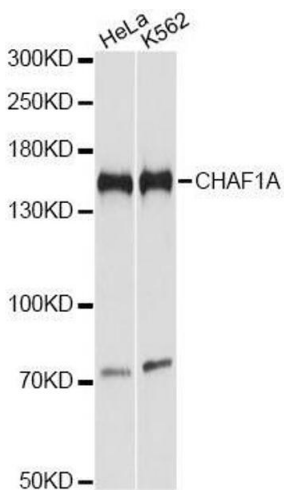
Handling

Buffer:	PBS with 0.02 % sodium azide,50 % glycerol, pH 7.3.
Preservative:	Sodium azide
Precaution of Use:	This product contains Sodium azide: a POISONOUS AND HAZARDOUS SUBSTANCE which should be handled by trained staff only.
Storage:	-20 °C
Storage Comment:	Store at -20°C. Avoid freeze / thaw cycles.



Western Blotting

Image 1. Western blot analysis of extracts of various cell lines, using CHAF1A antibody.



Western Blotting

Image 2. Western blot analysis of extracts of various cell lines, using CHAF1A antibody.