

Datasheet for ABIN1679217
anti-CHIA antibody (AA 1-368)

6 Images



[Go to Product page](#)

Overview

Quantity:	100 µg
Target:	CHIA
Binding Specificity:	AA 1-368
Reactivity:	Human
Host:	Rabbit
Clonality:	Polyclonal
Conjugate:	This CHIA antibody is un-conjugated
Application:	Western Blotting (WB), Immunohistochemistry (IHC), Immunofluorescence (IF)

Product Details

Immunogen:	Recombinant fusion protein containing a sequence corresponding to amino acids 1-368 of human CHIA (NP_001244932.1).
Sequence:	MVSTPENRQT FITSVIKFLR QYEFDGLDFD WEYPGSRGSP PQDKHLFTVL VQEMREAFEQ EAKQINKPRL MVTAAVAAGI SNIQSGYEIP QLSQYLDYIH VMTYDLHGWS EGYTGENSPL YKYPTDTGSN AYLNVDYVMN YWKDNGAPAE KLIVGFPTYG HNFILSNPSN TGIGAPTSGA GPAGPYAKES GIWAYYEICT FLKNGATQGW DAPQEVPIYAY QGNVWVG YDN IKSFDIKAQW LKHNFVGGAM VWAILDDFT GTFCNQKFKP LISTLKKALG LQSASCTAPA QPIEPITAAP SGSGNGSGSS SSGGSSGGSG FCAVRANGLY PVANNRNAFW HCVNGVTYQQ NCQAGLVFDT SCDCCNWA
Isotype:	IgG
Cross-Reactivity:	Human, Mouse, Rat

Product Details

Characteristics: Polyclonal Antibodies

Purification: Affinity purification

Target Details

Target: CHIA

Alternative Name: CHIA ([CHIA Products](#))

Background: The protein encoded by this gene degrades chitin, which is found in the cell wall of most fungi as well as in arthropods and some nematodes. The encoded protein can also stimulate interleukin 13 expression, and variations in this gene can lead to asthma susceptibility. Several transcript variants encoding a few different isoforms have been found for this gene.,CHIA,AMCASE,CHIT2,TSA1902,chitinase,acidic,Signal Transduction,Cell Biology & Developmental Biology,Growth factor,EGF,Immunology & Inflammation,Cytokines,Interleukins,Cell Intrinsic Innate Immunity Signaling Pathway,CHIA

Molecular Weight: 33 kDa/40 kDa/52 kDa

Gene ID: 27159

UniProt: [Q9BZP6](#)

Application Details

Application Notes: WB,1:500 - 1:2000,IHC,1:50 - 1:200,IF,1:50 - 1:200

Restrictions: For Research Use only

Handling

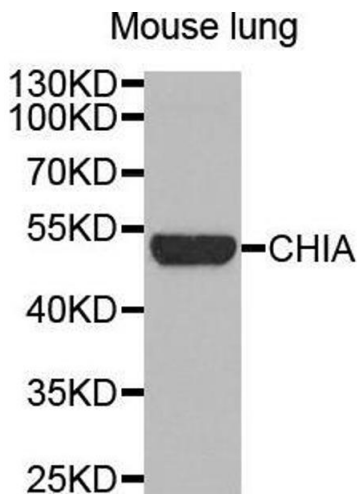
Buffer: PBS with 0.02 % sodium azide,50 % glycerol, pH 7.3.

Preservative: Sodium azide

Precaution of Use: This product contains Sodium azide: a POISONOUS AND HAZARDOUS SUBSTANCE which should be handled by trained staff only.

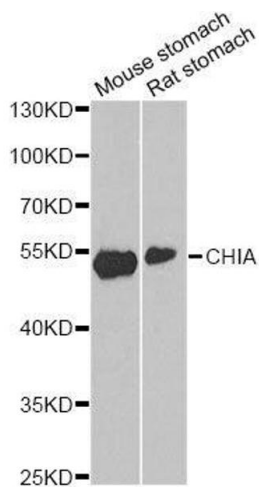
Storage: -20 °C

Storage Comment: Store at -20°C. Avoid freeze / thaw cycles.



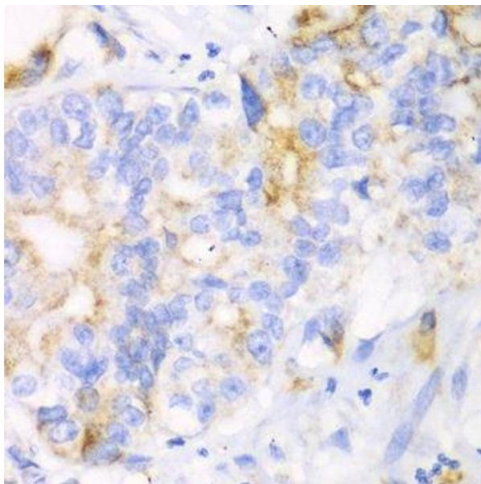
Western Blotting

Image 1.



Western Blotting

Image 2. Western blot analysis of extracts of various cell lines, using CHIA antibody.



Immunohistochemistry (Paraffin-embedded Sections)

Image 3. Immunohistochemistry of paraffin-embedded human liver cancer using CHIA antibody.

Please check the [product details page](#) for more images. Overall 6 images are available for ABIN1679217.