

Datasheet for ABIN1679234
anti-CIB1 antibody (AA 1-191)[Go to Product page](#)

2 Images

Overview

Quantity:	100 µg
Target:	CIB1
Binding Specificity:	AA 1-191
Reactivity:	Human
Host:	Rabbit
Clonality:	Polyclonal
Conjugate:	This CIB1 antibody is un-conjugated
Application:	Western Blotting (WB)

Product Details

Immunogen:	Recombinant fusion protein containing a sequence corresponding to amino acids 1-191 of human CIB1 (NP_006375.2).
Sequence:	MGGSGSRLSK ELLAEYQDLT FLTKQEILLA HRRFCELLPQ EQRSVESSLR AQVPFEQILS LPELKANPFK ERICRVFSTS PAKDSLSFED FLDLLSVFSD TATPDIKSHY AFRIFDFDDD GTLNREDLSR LVNCLTGECE DTRLSASEMK QLIDNILEES DIDRDGTINL SEFQHVISR PDFASSFKIV L
Isotype:	IgG
Cross-Reactivity:	Human, Mouse, Rat
Characteristics:	Polyclonal Antibodies
Purification:	Affinity purification

Target Details

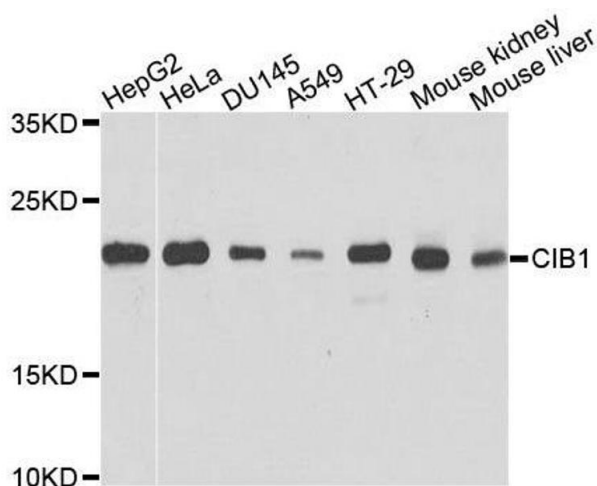
Target:	CIB1
Alternative Name:	CIB1 (CIB1 Products)
Background:	<p>This gene encodes a member of the EF-hand domain-containing calcium-binding superfamily. The encoded protein interacts with many other proteins, including the platelet integrin alpha-IIb-beta-3, DNA-dependent protein kinase, presenilin-2, focal adhesion kinase, p21 activated kinase, and protein kinase D. The encoded protein may be involved in cell survival and proliferation, and is associated with several disease states including cancer and Alzheimer's disease. Alternative splicing results in multiple transcript variants.,CIB1,CIB,CIBP,KIP1,PRKDCIP,SIP2-28,Signal Transduction,Cell Biology & Developmental Biology,Cell Adhesion,Cytoskeleton,Neuroscience,Calcium Signaling,CIB1</p>
Molecular Weight:	21 kDa/26 kDa
Gene ID:	10519
UniProt:	Q99828

Application Details

Application Notes:	WB,1:500 - 1:2000
Restrictions:	For Research Use only

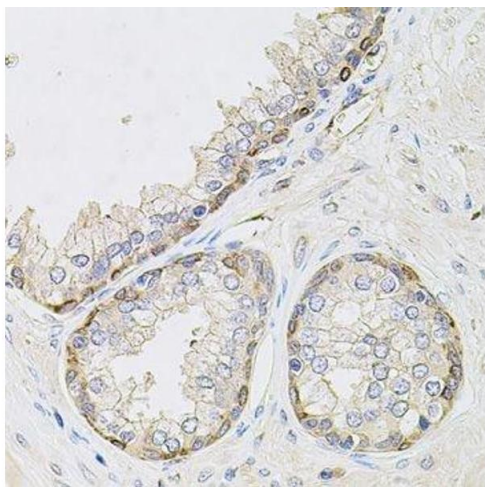
Handling

Buffer:	PBS with 0.02 % sodium azide,50 % glycerol, pH 7.3.
Preservative:	Sodium azide
Precaution of Use:	This product contains Sodium azide: a POISONOUS AND HAZARDOUS SUBSTANCE which should be handled by trained staff only.
Storage:	-20 °C
Storage Comment:	Store at -20°C. Avoid freeze / thaw cycles.



Western Blotting

Image 1. Western blot analysis of extracts of various cell lines, using CIB1 antibody.



Immunohistochemistry (Paraffin-embedded Sections)

Image 2. Immunohistochemistry of paraffin-embedded human prostate using CIB1 antibody.