

Datasheet for ABIN1679248  
**anti-CKS2 antibody (AA 1-79)**



[Go to Product page](#)

1 Image

Overview

Quantity:	100 µg
Target:	CKS2
Binding Specificity:	AA 1-79
Reactivity:	Human
Host:	Rabbit
Clonality:	Polyclonal
Conjugate:	This CKS2 antibody is un-conjugated
Application:	Western Blotting (WB), Immunohistochemistry (IHC)

Product Details

Immunogen:	Recombinant fusion protein containing a sequence corresponding to amino acids 1-79 of human CKS2 (NP_001818.1).
Sequence:	MAHKQIYYSY KYFDEHYEYR HVMLPRELSK QVPKTHLMSE EEWRRLLGVQQ SLGWVHYMIH EPEPHILLFR RPLPKDQQK
Isotype:	IgG
Cross-Reactivity:	Mouse, Rat
Characteristics:	Polyclonal Antibodies
Purification:	Affinity purification

## Target Details

---

Target:	CKS2
Alternative Name:	CKS2 ( <a href="#">CKS2 Products</a> )
Background:	CKS2 protein binds to the catalytic subunit of the cyclin dependent kinases and is essential for their biological function. The CKS2 mRNA is found to be expressed in different patterns through the cell cycle in HeLa cells, which reflects specialized role for the encoded protein.,CKS2,CKSHS2,Signal Transduction,Kinase,Cell Biology & Developmental Biology,Cell Cycle,CKS2
Molecular Weight:	9 kDa
Gene ID:	1164
UniProt:	<a href="#">P33552</a>

## Application Details

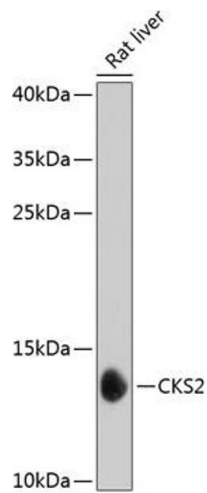
---

Application Notes:	WB,1:500 - 1:2000,IHC,1:50 - 1:100
Restrictions:	For Research Use only

## Handling

---

Buffer:	PBS with 0.02 % sodium azide,50 % glycerol, pH 7.3.
Preservative:	Sodium azide
Precaution of Use:	This product contains Sodium azide: a POISONOUS AND HAZARDOUS SUBSTANCE which should be handled by trained staff only.
Storage:	-20 °C
Storage Comment:	Store at -20°C. Avoid freeze / thaw cycles.



### Western Blotting

**Image 1.** Western blot analysis of extracts of rat liver, using CKS2 antibody (ABIN1679248, ABIN5664444, ABIN5664446 and ABIN6220361) at 1:1000 dilution. Secondary antibody: HRP Goat Anti-Rabbit IgG (H+L) (ABIN1684268 and ABIN3020597) at 1:10000 dilution. Lysates/proteins: 25  $\mu$ g per lane. Blocking buffer: 3 % nonfat dry milk in TBST. Detection: ECL Basic Kit (RM00020). Exposure time: 30s.