



[Go to Product page](#)

Datasheet for ABIN1679286
anti-CLTA antibody (AA 1-218)

1 Image

Overview

Quantity:	100 µg
Target:	CLTA
Binding Specificity:	AA 1-218
Reactivity:	Human
Host:	Rabbit
Clonality:	Polyclonal
Conjugate:	This CLTA antibody is un-conjugated
Application:	Western Blotting (WB)

Product Details

Immunogen:	Recombinant fusion protein containing a sequence corresponding to amino acids 1-218 of human CLTA (NP_001824.1).
Sequence:	MAELDPFGAP AGAPGGPALG NGVAGAGEED PAAFLAQQE SEIAGIENDE AFAILDGGAP GPQPHGEPPG GPDAVDGVMN GEYYQESNGP TDSYAAISQV DRLQSEPEI RKWREEQMER LEALDANSRK QEAWEKAI KELEEWYARQ DEQLQTKAN NRAAEEAFVN DIDESSPGTE WERVARLCDF NPKSSQAKD VSRMRSVLIS LKQAPLVH
Isotype:	IgG
Cross-Reactivity:	Human, Mouse, Rat
Characteristics:	Polyclonal Antibodies
Purification:	Affinity purification

Target Details

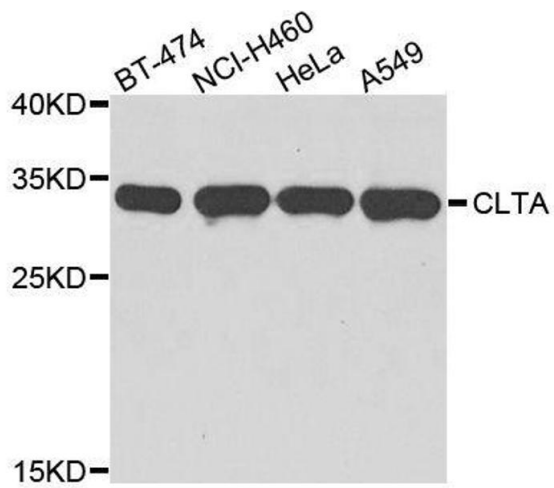
Target:	CLTA
Alternative Name:	CLTA (CLTA Products)
Background:	<p>Clathrin is a large, soluble protein composed of heavy and light chains. It functions as the main structural component of the lattice-type cytoplasmic face of coated pits and vesicles which entrap specific macromolecules during receptor-mediated endocytosis. This gene encodes one of two clathrin light chain proteins which are believed to function as regulatory elements. Alternative splicing results in multiple transcript variants. Related pseudogenes have been identified on chromosomes 8 and 12.,CLTA,LCA,Signal Transduction,Immunology & Inflammation,B Cell Receptor Signaling Pathway,Neuroscience,Neurodegenerative Diseases,CLTA</p>
Molecular Weight:	17 kDa/23 kDa/24 kDa/25 kDa/27 kDa
Gene ID:	1211
UniProt:	P09496
Pathways:	EGFR Signaling Pathway , Neurotrophin Signaling Pathway , EGFR Downregulation

Application Details

Application Notes:	WB,1:200 - 1:2000
Restrictions:	For Research Use only

Handling

Buffer:	PBS with 0.02 % sodium azide,50 % glycerol, pH 7.3.
Preservative:	Sodium azide
Precaution of Use:	This product contains Sodium azide: a POISONOUS AND HAZARDOUS SUBSTANCE which should be handled by trained staff only.
Storage:	-20 °C
Storage Comment:	Store at -20°C. Avoid freeze / thaw cycles.



Western Blotting

Image 1. Western blot analysis of extracts of various cell lines, using CLTA antibody.