



[Go to Product page](#)

Datasheet for ABIN1679319
anti-COL6A2 antibody (AA 720-1019)

1 Image

Overview

Quantity:	100 µg
Target:	COL6A2
Binding Specificity:	AA 720-1019
Reactivity:	Human
Host:	Rabbit
Clonality:	Polyclonal
Conjugate:	This COL6A2 antibody is un-conjugated
Application:	Western Blotting (WB)

Product Details

Immunogen:	Recombinant fusion protein containing a sequence corresponding to amino acids 720-1019 of human COL6A2 (NP_001840.3).
Sequence:	RQKTRVFAVV ITDGRHDPRD DDLNLRALCD RDVTVTAIGI GDMFHEKHES ENLYSIACDK PQQVRNMTLF SDLVAEKFID DMEDVLCPPD QIVCPDLPCQ TELSVAQCTQ RPVDIVFLLD GSERLGEQNF HKARRFVEQV ARRLTLARRD DDPLNARVAL LQFGGPGEEQ VAFPLSHNLT AIHEALETQ YLNSFSHVGA GVVHAINAIV RSPRGGARRH AELSFVFLTD GVTGNDLHE SAHSMRKQNV VPTVLALGSD VDMDVLTTLT LGDRAAVFHE KDYDSLAPG FFDRFIRWIC
Isotype:	IgG
Cross-Reactivity:	Human, Mouse
Characteristics:	Polyclonal Antibodies
Purification:	Affinity purification

Target Details

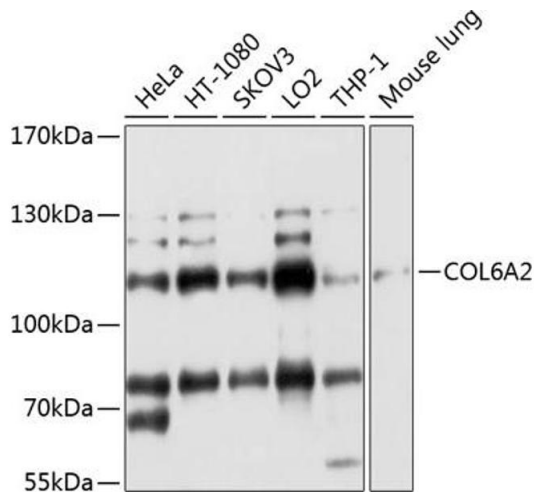
Target:	COL6A2
Alternative Name:	COL6A2 (COL6A2 Products)
Background:	This gene encodes one of the three alpha chains of type VI collagen, a beaded filament collagen found in most connective tissues. The product of this gene contains several domains similar to von Willebrand Factor type A domains. These domains have been shown to bind extracellular matrix proteins, an interaction that explains the importance of this collagen in organizing matrix components. Mutations in this gene are associated with Bethlem myopathy and Ullrich scleroatonic muscular dystrophy. Three transcript variants have been identified for this gene.,COL6A2,BTHLM1,PP3610,UCMD1,Signal Transduction,Cell Biology & Developmental Biology,Cytoskeleton,Extracellular Matrix,Collagen,COL6A2
Molecular Weight:	87 kDa/97 kDa/108 kDa
Gene ID:	1292
UniProt:	P12110

Application Details

Application Notes:	WB,1:200 - 1:2000
Restrictions:	For Research Use only

Handling

Buffer:	PBS with 0.02 % sodium azide,50 % glycerol, pH 7.3.
Preservative:	Sodium azide
Precaution of Use:	This product contains Sodium azide: a POISONOUS AND HAZARDOUS SUBSTANCE which should be handled by trained staff only.
Storage:	-20 °C
Storage Comment:	Store at -20°C. Avoid freeze / thaw cycles.



Western Blotting

Image 1. Western blot analysis of extracts of various cell lines, using COL6 antibody (ABIN1679319, ABIN3018110, ABIN3018111 and ABIN6220367) at 1:1000 dilution. Secondary antibody: HRP Goat Anti-Rabbit IgG (H+L) (ABIN1684268 and ABIN3020597) at 1:10000 dilution. Lysates/proteins: 25 µg per lane. Blocking buffer: 3 % nonfat dry milk in TBST. Detection: ECL Basic Kit (RM00020). Exposure time: 40s.