



[Go to Product page](#)

Datasheet for ABIN1679321  
**anti-COMT antibody (AA 42-221)**

3 Images

Overview

Quantity:	100 µg
Target:	COMT
Binding Specificity:	AA 42-221
Reactivity:	Human
Host:	Rabbit
Clonality:	Polyclonal
Application:	Western Blotting (WB), Immunoprecipitation (IP)

Product Details

Immunogen:	Recombinant fusion protein containing a sequence corresponding to amino acids 42-221 of human COMT (NP_009294.1).
Sequence:	VGDKKGGKIVD AVIQEHQPSV LLELGAYCGY SAVRMARLLS PGARLITIEI NPDCAAITQR MVDFAGVKDK VTLVVGASQD IIPQLKKKYD VDTLDMVFLD HWKDRYLPDT LLEECGLLR KGTVLLADNV ICPGAPDFLA HVRGSSCFEC THYQSFLEYR EVVDGLEKAI YKGGPSEAGP
Isotype:	IgG
Cross-Reactivity:	Human, Mouse
Characteristics:	Polyclonal Antibodies
Purification:	Affinity purification

Target Details

Target:	COMT
---------	------

## Target Details

---

Alternative Name: COMT ([COMT Products](#))

---

Background: Catechol-O-methyltransferase catalyzes the transfer of a methyl group from S-adenosylmethionine to catecholamines, including the neurotransmitters dopamine, epinephrine, and norepinephrine. This O-methylation results in one of the major degradative pathways of the catecholamine transmitters. In addition to its role in the metabolism of endogenous substances, COMT is important in the metabolism of catechol drugs used in the treatment of hypertension, asthma, and Parkinson disease. COMT is found in two forms in tissues, a soluble form (S-COMT) and a membrane-bound form (MB-COMT). The differences between S-COMT and MB-COMT reside within the N-termini. Several transcript variants are formed through the use of alternative translation initiation sites and promoters. [COMT,HEL-S-98n,Epigenetics & Nuclear Signaling,Signal Transduction,Endocrine & Metabolism,Drug metabolism,Neuroscience,Neurodegenerative Diseases,Dopamine Signaling in Parkinson's Disease,COMT](#)

---

Molecular Weight: 24 kDa/30 kDa

---

Gene ID: 1312

---

UniProt: [P21964](#)

---

Pathways: [Steroid Hormone Biosynthesis](#), [SARS-CoV-2 Protein Interactome](#)

---

## Application Details

---

Application Notes: WB,1:500 - 1:2000,IP,1:50 - 1:100

---

Restrictions: For Research Use only

---

## Handling

---

Buffer: PBS with 0.02 % sodium azide,50 % glycerol, pH 7.3.

---

Preservative: Sodium azide

---

Precaution of Use: This product contains Sodium azide: a POISONOUS AND HAZARDOUS SUBSTANCE which should be handled by trained staff only.

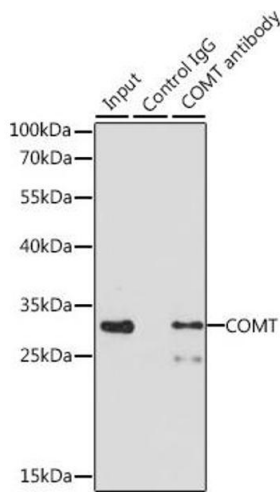
---

Storage: -20 °C

---

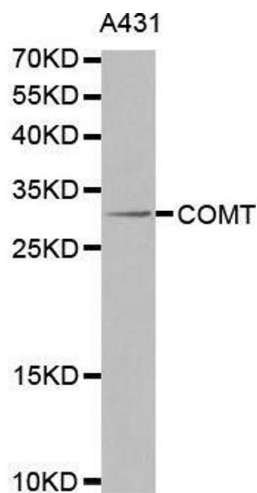
Storage Comment: Store at -20°C. Avoid freeze / thaw cycles.

---



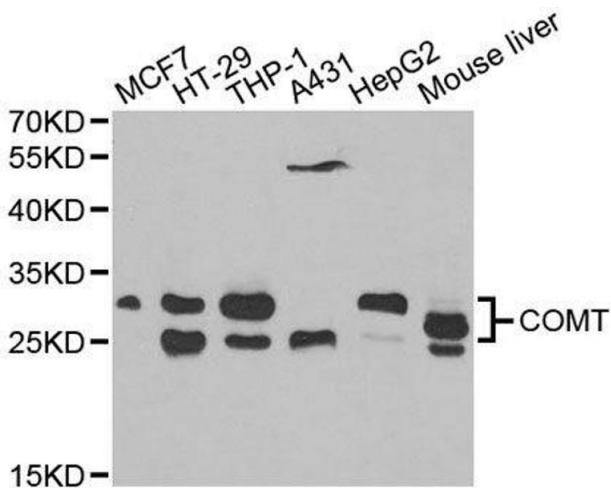
### Immunoprecipitation

**Image 1.** Immunoprecipitation analysis of 200 µg extracts of MCF-7 cells, using 3 µg COMT antibody (ABIN1679321, ABIN3015439, ABIN3015440 and ABIN6216759). Western blot was performed from the immunoprecipitate using COMT antibody (ABIN1679321, ABIN3015439, ABIN3015440 and ABIN6216759) at a dilution of 1:1000.



### Western Blotting

**Image 2.** Western blot analysis of extracts of A431 cells lines, using COMT antibody.



### Western Blotting

**Image 3.** Western blot analysis of extracts of various cell lines, using COMT antibody.