



[Go to Product page](#)

Datasheet for ABIN1679408
anti-CTP Synthase antibody (AA 402-591)

1 Image

Overview

Quantity:	100 µg
Target:	CTP Synthase (CTPS)
Binding Specificity:	AA 402-591
Reactivity:	Human
Host:	Rabbit
Clonality:	Polyclonal
Conjugate:	This CTP Synthase antibody is un-conjugated
Application:	Western Blotting (WB)

Product Details

Immunogen:	Recombinant fusion protein containing a sequence corresponding to amino acids 402-591 of human CTPS1 (NP_001896.2).
Sequence:	MQLAVVEFSR NVLGWQDANS TEFDPTTSHV VVDMPEHNP GQMGGMRLG KRRTLFQTKN SVMRKLYGDA DYLEERHRHR FEVNPVWKKC LEEQGLKFVG QDVEGERMEI VELEDHPFFV GVQYHPEFLS RPIKPSPPYF GLLLASVGR L SHYLQKGCRL SPRDTYSDRS GSSSPDSEIT ELKFPSINH D
Isotype:	IgG
Cross-Reactivity:	Human, Mouse
Characteristics:	Polyclonal Antibodies
Purification:	Affinity purification

Target Details

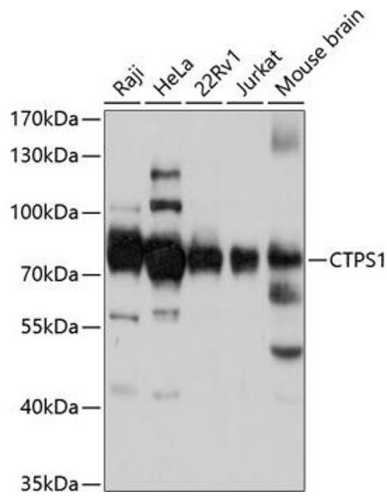
Target:	CTP Synthase (CTPS)
Alternative Name:	CTPS1 (CTPS Products)
Background:	This gene encodes an enzyme responsible for the catalytic conversion of UTP (uridine triphosphate) to CTP (cytidine triphosphate). This reaction is an important step in the biosynthesis of phospholipids and nucleic acids. Activity of this protein is important in the immune system, and loss of function of this gene has been associated with immunodeficiency. Alternative splicing results in multiple transcript variants.,CTPS1,CTPS,GATD5,IMD24,Signal Transduction,Endocrine & Metabolism,Nucleotide metabolism,CTPS1
Molecular Weight:	41 kDa/66 kDa
Gene ID:	1503
UniProt:	P17812
Pathways:	Proton Transport , Ribonucleoside Biosynthetic Process

Application Details

Application Notes:	WB,1:500 - 1:2000
Restrictions:	For Research Use only

Handling

Buffer:	PBS with 0.02 % sodium azide,50 % glycerol, pH 7.3.
Preservative:	Sodium azide
Precaution of Use:	This product contains Sodium azide: a POISONOUS AND HAZARDOUS SUBSTANCE which should be handled by trained staff only.
Storage:	-20 °C
Storage Comment:	Store at -20°C. Avoid freeze / thaw cycles.



Western Blotting

Image 1. Western blot analysis of extracts of various cell lines, using CTPS1 antibody (ABIN1679408, ABIN3018132, ABIN3018133 and ABIN6220375) at 1:3000 dilution. Secondary antibody: HRP Goat Anti-Rabbit IgG (H+L) (ABIN1684268 and ABIN3020597) at 1:10000 dilution. Lysates/proteins: 25 µg per lane. Blocking buffer: 3 % nonfat dry milk in TBST. Detection: ECL Basic Kit (RM00020). Exposure time: 5s.