

Datasheet for ABIN1679472
anti-CYP24A1 antibody (AA 36-448)



[Go to Product page](#)

4 Images

Overview

Quantity:	100 µg
Target:	CYP24A1
Binding Specificity:	AA 36-448
Reactivity:	Human
Host:	Rabbit
Clonality:	Polyclonal
Conjugate:	This CYP24A1 antibody is un-conjugated
Application:	Western Blotting (WB), Immunohistochemistry (IHC)

Product Details

Immunogen:	Recombinant fusion protein containing a sequence corresponding to amino acids 36-448 of human CYP24A1 (NP_001122387.1).
Sequence:	PQPREVPVCP LTAGGETQNA AALPGPTSWP LLGSLQILW KGGLKKQHDT LVEYHKKYGK IFRMKLGSFE SVHLGSPCLL EALYRTESAY PQRLEIKPWK AYRDYRKEGY GLLILEGEDW QRVRSAFQKK LMKPGEVMKL DNKINEVLAD FMGRIDELCD ERGHVEDLYS ELNKWSFESI CLVLYEKRFGLLQKNAGDEA VNFIMAIAKTM MSTFGRMMVT PVELHKSLNT KVVQDHTLAW DTIFKSVKAC IDNRLEKYSQ QPSADFLCDI YHQNRLSKKE LYAAVTELQL AAVETTANSL MWILYNLSRN PQVQQKLLKE IQSVLPENQV PRAEDLRNMP YLKACLKESM RLTPSVPFST RTLDKATVLG EYALPKGIVR KYDIQATDNE PVEMLHSGTL VPSRELPIAF CQR
Isotype:	IgG
Cross-Reactivity:	Human, Mouse, Rat

Product Details

Characteristics: Polyclonal Antibodies

Purification: Affinity purification

Target Details

Target: CYP24A1

Alternative Name: CYP24A1 ([CYP24A1 Products](#))

Background: This gene encodes a member of the cytochrome P450 superfamily of enzymes. The cytochrome P450 proteins are monooxygenases which catalyze many reactions involved in drug metabolism and synthesis of cholesterol, steroids and other lipids. This mitochondrial protein initiates the degradation of 1,25-dihydroxyvitamin D3, the physiologically active form of vitamin D3, by hydroxylation of the side chain. In regulating the level of vitamin D3, this enzyme plays a role in calcium homeostasis and the vitamin D endocrine system. Alternatively spliced transcript variants encoding different isoforms have been found for this gene.,CYP24A1,CP24,CYP24,HCAI,HCINF1,P450-CC24,Cancer,Signal Transduction,Endocrine & Metabolism,Mitochondrial metabolism,Cytochromes,Mitochondrial markers,Lipid Metabolism,Cytochromes,Lipases,Cardiovascular,Lipids,CYP24A1

Molecular Weight: 43 kDa/51 kDa/58 kDa

Gene ID: 1591

UniProt: [Q07973](#)

Pathways: [Metabolism of Steroid Hormones and Vitamin D](#)

Application Details

Application Notes: WB,1:500 - 1:2000,IHC,1:50 - 1:100

Restrictions: For Research Use only

Handling

Buffer: PBS with 0.02 % sodium azide,50 % glycerol, pH 7.3.

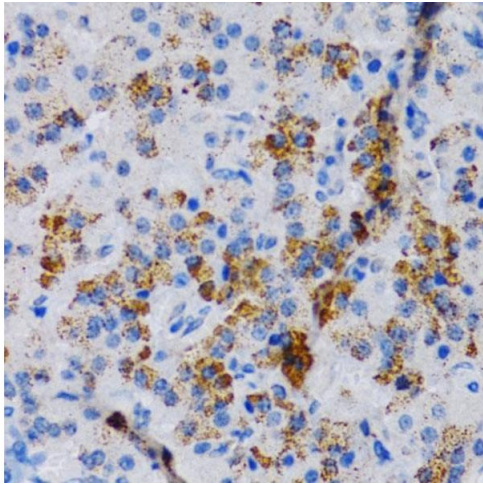
Preservative: Sodium azide

Precaution of Use: This product contains Sodium azide: a POISONOUS AND HAZARDOUS SUBSTANCE which should be handled by trained staff only.

Storage: -20 °C

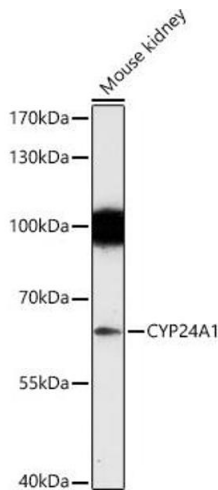
Storage Comment: Store at -20°C. Avoid freeze / thaw cycles.

Images



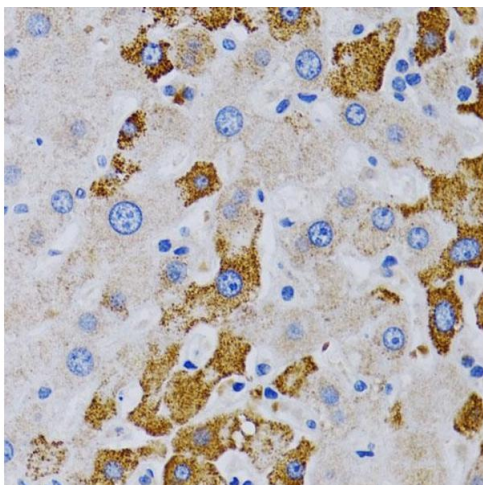
Immunohistochemistry

Image 1. Immunohistochemistry of paraffin-embedded rat pancreas using CYP24 antibody (805) at dilution of 1:200 (40x lens). Perform microwave antigen retrieval with 10 mM PBS buffer pH 7.2 before commencing with IHC staining protocol.



Western Blotting

Image 2. Western blot analysis of extracts of Mouse kidney, using CYP24 antibody (805) at 1:1000 dilution. Secondary antibody: HRP Goat Anti-Rabbit IgG (H+L) (ABIN1684268 and ABIN3020597) at 1:10000 dilution. Lysates/proteins: 25 µg per lane. Blocking buffer: 3% nonfat dry milk in TBST. Detection: ECL Enhanced Kit (RM00021). Exposure time: 180s.



Immunohistochemistry

Image 3. Immunohistochemistry of paraffin-embedded human liver cancer using CYP24 antibody (805) at dilution of 1:200 (40x lens). Perform microwave antigen retrieval with 10 mM PBS buffer pH 7.2 before commencing with IHC staining protocol.

Please check the [product details page](#) for more images. Overall 4 images are available for ABIN1679472.