

Datasheet for ABIN1679474  
**anti-CYP2B6 antibody (AA 160-340)**



[Go to Product page](#)

5 Images

Overview

Quantity:	100 µg
Target:	CYP2B6
Binding Specificity:	AA 160-340
Reactivity:	Human
Host:	Rabbit
Clonality:	Polyclonal
Conjugate:	This CYP2B6 antibody is un-conjugated
Application:	Western Blotting (WB), Immunohistochemistry (IHC)

Product Details

Immunogen:	Recombinant fusion protein containing a sequence corresponding to amino acids 160-340 of human CYP2B6 (NP_000758.1).
Sequence:	SKGALMDPTF LFSITANII CSIVFGKRFH YQDQEFLKML NLFYQTFSLI SSVFGQLFEL FSGFLKYFPG AHRQVYKNLQ EINAYIGHSV EKHRETLDPS APKDLIDTYL LHMEKEKSNA HSEFSHQNLN LNTLSLFFAG TETTSTTLRY GFLMLKYPH VAERVYREIE QVIGPHRPPE L
Isotype:	IgG
Cross-Reactivity:	Human, Mouse, Rat
Characteristics:	Polyclonal Antibodies
Purification:	Affinity purification

## Target Details

---

Target:	CYP2B6
Alternative Name:	CYP2B6 ( <a href="#">CYP2B6 Products</a> )
Background:	<p>This gene, CYP2B6, encodes a member of the cytochrome P450 superfamily of enzymes. The cytochrome P450 proteins are monooxygenases which catalyze many reactions involved in drug metabolism and synthesis of cholesterol, steroids and other lipids. This protein localizes to the endoplasmic reticulum and its expression is induced by phenobarbital. The enzyme is known to metabolize some xenobiotics, such as the anti-cancer drugs cyclophosphamide and ifosphamide. Transcript variants for this gene have been described, however, it has not been resolved whether these transcripts are in fact produced by this gene or by a closely related pseudogene, CYP2B7. Both the gene and the pseudogene are located in the middle of a CYP2A pseudogene found in a large cluster of cytochrome P450 genes from the CYP2A, CYP2B and CYP2F subfamilies on chromosome</p> <p>19q.,CYP2B6,CPB6,CYP2B,CYP2B7,CYP2B7P,CYPIIB6,EFVM,IIB1,P450,Cancer,Signal Transduction,Endocrine &amp; Metabolism,Mitochondrial metabolism,Cytochromes,Lipid Metabolism,Cytochromes,Lipases,Drug metabolism,Cardiovascular,Lipids,CYP2B6</p>
Molecular Weight:	33 kDa/56 kDa
Gene ID:	1555
UniProt:	<a href="#">P20813</a>

## Application Details

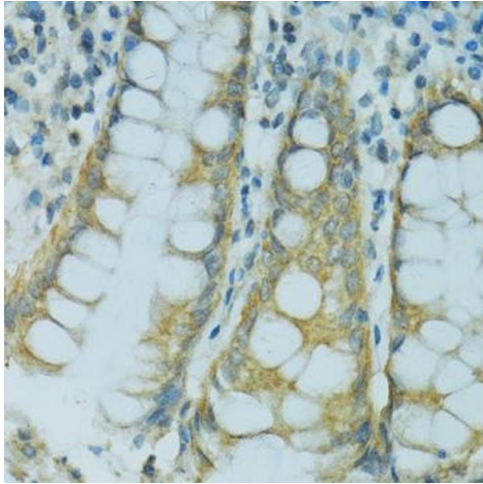
---

Application Notes:	WB,1:500 - 1:1000,IHC,1:50 - 1:100
Restrictions:	For Research Use only

## Handling

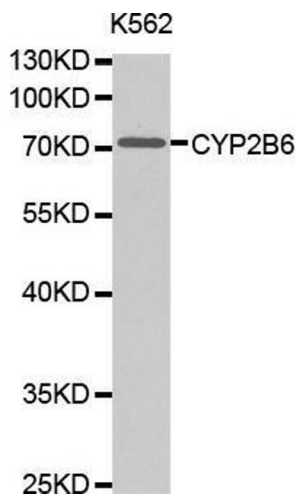
---

Buffer:	PBS with 0.02 % sodium azide,50 % glycerol, pH 7.3.
Preservative:	Sodium azide
Precaution of Use:	This product contains Sodium azide: a POISONOUS AND HAZARDOUS SUBSTANCE which should be handled by trained staff only.
Storage:	-20 °C
Storage Comment:	Store at -20°C. Avoid freeze / thaw cycles.



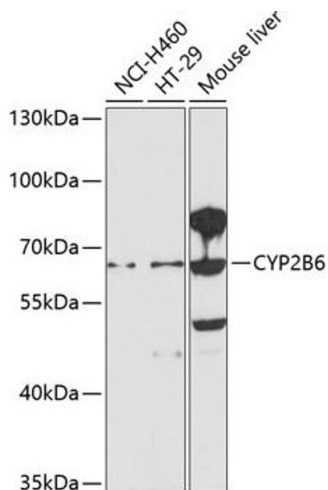
### Immunohistochemistry

**Image 1.** Immunohistochemistry of paraffin-embedded human colon using CYP2B6 antibody (ABIN1679474, ABIN5663912, ABIN5663914 and ABIN6218554) at dilution of 1:100 (40x lens). Perform microwave antigen retrieval with 10 mM PBS buffer pH 7.2 before commencing with IHC staining protocol.



### Western Blotting

**Image 2.**



### Western Blotting

**Image 3.** Western blot analysis of extracts of various cell lines, using CYP2B6 antibody (ABIN1679474, ABIN5663912, ABIN5663914 and ABIN6218554) at 1:1000 dilution. Secondary antibody: HRP Goat Anti-Rabbit IgG (H+L) (ABIN1684268 and ABIN3020597) at 1:10000 dilution. Lysates/proteins: 25 µg per lane. Blocking buffer: 3 % nonfat dry milk in TBST. Detection: ECL Enhanced Kit (RM00021). Exposure time: 90s.

Please check the [product details page](#) for more images. Overall 5 images are available for ABIN1679474.