

Datasheet for ABIN1679510
anti-DDC antibody (AA 1-100)



[Go to Product page](#)

7 Images

Overview

Quantity:	100 µg
Target:	DDC
Binding Specificity:	AA 1-100
Reactivity:	Human
Host:	Rabbit
Clonality:	Polyclonal
Conjugate:	This DDC antibody is un-conjugated
Application:	Western Blotting (WB), Immunohistochemistry (IHC)

Product Details

Immunogen:	Recombinant fusion protein containing a sequence corresponding to amino acids 1-100 of human DDC (NP_000781.1).
Sequence:	MNASEFRRRG KEMVDYVANY MEGIEGRQVY PDVEPGYLRP LIPAAAPQEP DTFEDIINDV EKIIMPGVTH WHSPYFFAYF PTASSYPAML ADMLCGAIGC
Isotype:	IgG
Cross-Reactivity:	Human, Mouse, Rat
Characteristics:	Polyclonal Antibodies
Purification:	Affinity purification

Target Details

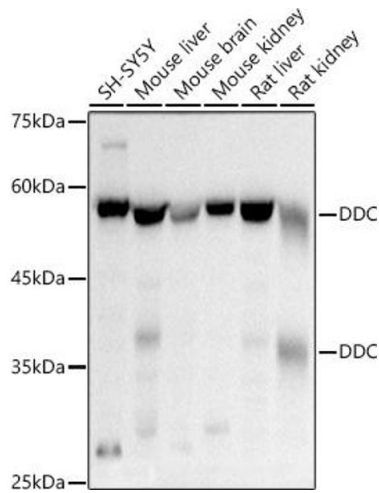
Target:	DDC
Alternative Name:	DDC (DDC Products)
Background:	The encoded protein catalyzes the decarboxylation of L-3,4-dihydroxyphenylalanine (DOPA) to dopamine, L-5-hydroxytryptophan to serotonin and L-tryptophan to tryptamine. Defects in this gene are the cause of aromatic L-amino-acid decarboxylase deficiency (AADCD). AADCD deficiency is an inborn error in neurotransmitter metabolism that leads to combined serotonin and catecholamine deficiency. Multiple alternatively spliced transcript variants encoding different isoforms have been identified for this gene.,DDC,AADC,Cancer,Endocrine & Metabolism,Amino acid metabolism,Neuroscience,Neurodegenerative Diseases,Dopamine Signaling in Parkinson's Disease,DDC
Molecular Weight:	37 kDa/44 kDa/45 kDa/53 kDa
Gene ID:	1644
UniProt:	P20711
Pathways:	Dopaminergic Neurogenesis

Application Details

Application Notes:	WB,1:200 - 1:2000,IHC,1:50 - 1:200
Restrictions:	For Research Use only

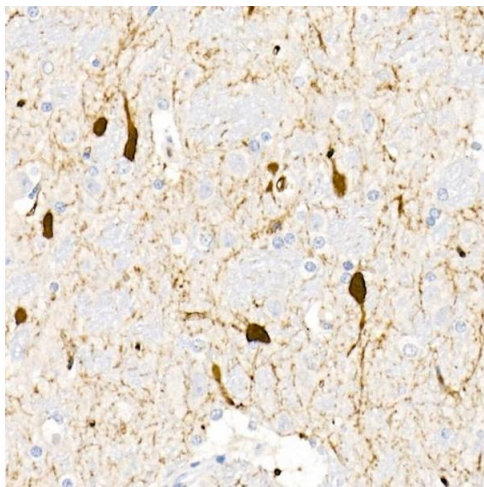
Handling

Buffer:	PBS with 0.02 % sodium azide,50 % glycerol, pH 7.3.
Preservative:	Sodium azide
Precaution of Use:	This product contains Sodium azide: a POISONOUS AND HAZARDOUS SUBSTANCE which should be handled by trained staff only.
Storage:	-20 °C
Storage Comment:	Store at -20°C. Avoid freeze / thaw cycles.



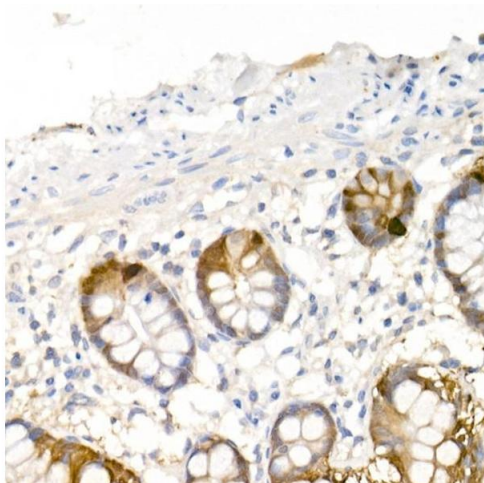
Western Blotting

Image 1. Western blot analysis of extracts of various cell lines, using DDC antibody (ABIN1679510, ABIN3018150, ABIN3018151 and ABIN6220384) at 1:500 dilution. Secondary antibody: HRP Goat Anti-Rabbit IgG (H+L) (ABIN1684268 and ABIN3020597) at 1:10000 dilution. Lysates/proteins: 25 µg per lane. Blocking buffer: 3 % nonfat dry milk in TBST. Detection: ECL Basic Kit (RM00020). Exposure time: 3s.



Immunohistochemistry

Image 2. Immunohistochemistry of paraffin-embedded rat brain using DDC Rabbit pAb (ABIN1679510, ABIN3018150, ABIN3018151 and ABIN6220384) at dilution of 1:25 (40x lens). Perform high pressure antigen retrieval with 10 mM citrate buffer pH 6.0 before commencing with IHC staining protocol.



Immunohistochemistry

Image 3. Immunohistochemistry of paraffin-embedded human small intestine using DDC Rabbit pAb (ABIN1679510, ABIN3018150, ABIN3018151 and ABIN6220384) at dilution of 1:25 (40x lens). Perform high pressure antigen retrieval with 10 mM citrate buffer pH 6.0 before commencing with IHC staining protocol.

Please check the [product details page](#) for more images. Overall 7 images are available for ABIN1679510.