

Datasheet for ABIN1679512
anti-THO Complex 4 antibody



[Go to Product page](#)

4 Images

Overview

Quantity:	100 µg
Target:	THO Complex 4 (THOC4)
Reactivity:	Human
Host:	Rabbit
Clonality:	Monoclonal
Conjugate:	This THO Complex 4 antibody is un-conjugated
Application:	Western Blotting (WB), Immunohistochemistry (IHC)

Product Details

Immunogen:	A synthesized peptide derived from human THOC4/THOC4/ALYREFREF
Isotype:	IgG
Cross-Reactivity:	Human, Mouse, Rat
Characteristics:	Monoclonal Antibodies
Purification:	Affinity purification

Target Details

Target:	THO Complex 4 (THOC4)
Alternative Name:	ALYREF (THOC4 Products)
Background:	The protein encoded by this gene is a heat stable, nuclear protein and functions as a molecular chaperone. It is thought to regulate dimerization, DNA binding, and transcriptional activity of

Target Details

	basic region-leucine zipper (bZIP) proteins. [provided by RefSeq, Jul 2008],ALY, ALY/REF, BEF, REF, THOC4,Epigenetics & Nuclear Signaling,RNA Binding,ALYREF
Molecular Weight:	27 kDa
Gene ID:	10189
UniProt:	Q86V81

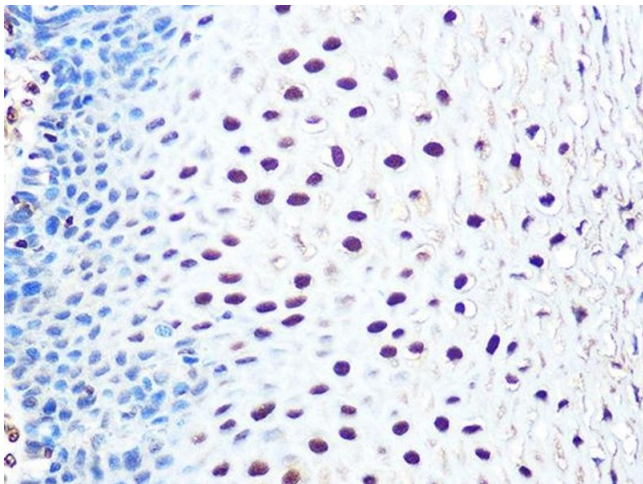
Application Details

Application Notes:	WB,1:500 - 1:2000,IHC,1:50 - 1:200
Restrictions:	For Research Use only

Handling

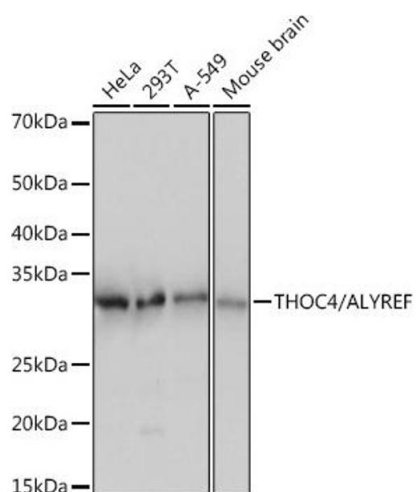
Buffer:	PBS with 0.02 % sodium azide,0.05 % BSA,50 % glycerol, pH 7.3.
Preservative:	Sodium azide
Precaution of Use:	This product contains Sodium azide: a POISONOUS AND HAZARDOUS SUBSTANCE which should be handled by trained staff only.
Storage:	-20 °C
Storage Comment:	Store at -20°C. Avoid freeze / thaw cycles.

Images



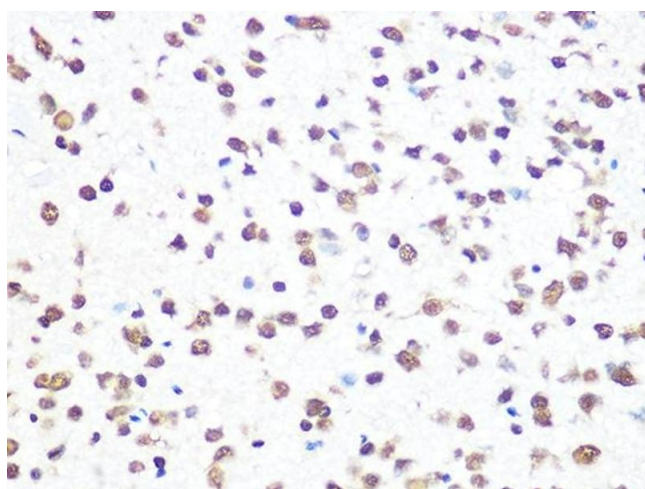
Immunohistochemistry

Image 1. Immunohistochemistry of paraffin-embedded human esophageal using THOC4/THOC4/ALYREFREF Rabbit mAb (ABIN1679512, ABIN3018793, ABIN3018794 and ABIN7101662) at dilution of 1:100 (40x lens). Perform microwave antigen retrieval with 10 mM PBS buffer pH 7.2 before commencing with IHC staining protocol.



Western Blotting

Image 2. Western blot analysis of THOC4/THOC4/ALYREF protein expression in extracts of various cell lines, using THOC4/THOC4/ALYREF Rabbit mAb (ABIN1679512, ABIN3018793, ABIN3018794 and ABIN7101662) at 1:1000 dilution. Secondary antibody: HRP Goat Anti-Rabbit IgG (H+L) (ABIN1684268 and ABIN3020597) at 1:10000 dilution. Lysates/proteins: 25 µg per lane. Blocking buffer: 3 % nonfat dry milk in TBST. Detection: ECL Basic Kit (RM00020). Exposure time: 1 s.



Immunohistochemistry

Image 3. Immunohistochemistry of paraffin-embedded rat brain using THOC4/THOC4/ALYREF Rabbit mAb (ABIN1679512, ABIN3018793, ABIN3018794 and ABIN7101662) at dilution of 1:100 (40x lens). Perform microwave antigen retrieval with 10 mM PBS buffer pH 7.2 before commencing with IHC staining protocol.

Please check the [product details page](#) for more images. Overall 4 images are available for ABIN1679512.