



Datasheet for ABIN1679532  
**anti-GCN2 antibody**



[Go to Product page](#)

1 Image

### Overview

Quantity:	100 µg
Target:	GCN2 (EIF2AK4)
Reactivity:	Human
Host:	Rabbit
Clonality:	Monoclonal
Conjugate:	This GCN2 antibody is un-conjugated
Application:	Western Blotting (WB)

### Product Details

Immunogen:	A synthesized peptide derived from human GCN2
Isotype:	IgG
Cross-Reactivity:	Human, Mouse, Rat
Characteristics:	Monoclonal Antibodies
Purification:	Affinity purification

### Target Details

Target:	GCN2 (EIF2AK4)
Alternative Name:	EIF2AK4 ( <a href="#">EIF2AK4 Products</a> )
Background:	This gene encodes a member of a family of kinases that phosphorylate the alpha subunit of eukaryotic translation initiation factor-2 (EIF2), resulting in the downregulation of protein

## Target Details

---

synthesis. The encoded protein responds to amino acid deprivation by binding uncharged transfer RNAs. It may also be activated by glucose deprivation and viral infection. Mutations in this gene have been found in individuals suffering from autosomal recessive pulmonary venoocclusive-disease-2. [provided by RefSeq, Mar 2014],GCN2, PVOD2,Epigenetics & Nuclear Signaling,Kinase,Kinase\_Serine/threonine kinases,Translation Control,Translational Control\_Regulation of eIF2,EIF2AK4

---

Molecular Weight: 187 kDa

---

Gene ID: 440275

---

UniProt: [Q9P2K8](#)

---

Pathways: [ER-Nucleus Signaling](#), [Hepatitis C](#)

## Application Details

---

---

Application Notes: WB,1:500 - 1:2000

---

Restrictions: For Research Use only

## Handling

---

---

Buffer: PBS with 0.02 % sodium azide,0.05 % BSA,50 % glycerol, pH 7.3.

---

Preservative: Sodium azide

---

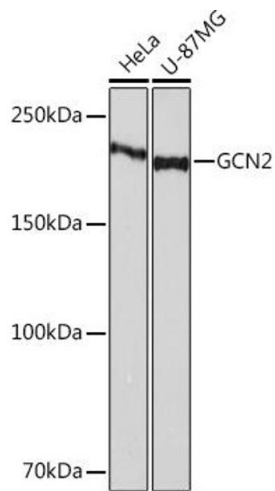
Precaution of Use: This product contains Sodium azide: a POISONOUS AND HAZARDOUS SUBSTANCE which should be handled by trained staff only.

---

Storage: -20 °C

---

Storage Comment: Store at -20°C. Avoid freeze / thaw cycles.



### Western Blotting

**Image 1.** Western blot analysis of extracts of various cell lines, using GCN2 Rabbit mAb (ABIN1679532, ABIN3015972, ABIN3015973 and ABIN7101471) at 1:1000 dilution. Secondary antibody: HRP Goat Anti-Rabbit IgG (H+L) (ABIN1684268 and ABIN3020597) at 1:10000 dilution. Lysates/proteins: 25 µg per lane. Blocking buffer: 3 % nonfat dry milk in TBST. Detection: ECL Basic Kit (RM00020). Exposure time: 3 min.