

Datasheet for ABIN1679634
anti-MAPRE1 antibody (AA 134-268)[Go to Product page](#)

1 Image

Overview

Quantity:	100 µg
Target:	MAPRE1
Binding Specificity:	AA 134-268
Reactivity:	Human
Host:	Rabbit
Clonality:	Polyclonal
Conjugate:	This MAPRE1 antibody is un-conjugated
Application:	Western Blotting (WB)

Product Details

Immunogen:	Recombinant fusion protein containing a sequence corresponding to amino acids 134-268 of human MAPRE1 (NP_036457.1).
Sequence:	ETAVAPSLVA PALNKPKKPL TSSSAAPQRP ISTQRTAAAP KAGPGVVRKN PGVGNGDDEA AELMQQVNVL KLTVEDLEKE RDFYFGKLRN IELICQENEG ENDPVLQRIV DILYATDEGF VIPDEGGPQE EQEEY
Isotype:	IgG
Cross-Reactivity:	Human, Mouse, Rat
Characteristics:	Polyclonal Antibodies
Purification:	Affinity purification

Target Details

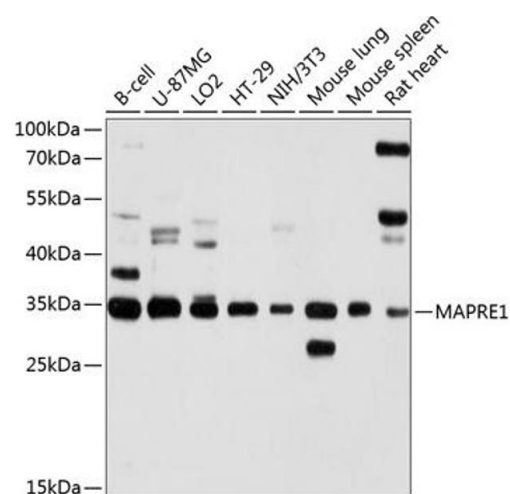
Target:	MAPRE1
Alternative Name:	MAPRE1 (MAPRE1 Products)
Background:	<p>The protein encoded by this gene was first identified by its binding to the APC protein which is often mutated in familial and sporadic forms of colorectal cancer. This protein localizes to microtubules, especially the growing ends, in interphase cells. During mitosis, the protein is associated with the centrosomes and spindle microtubules. The protein also associates with components of the dynactin complex and the intermediate chain of cytoplasmic dynein. Because of these associations, it is thought that this protein is involved in the regulation of microtubule structures and chromosome stability. This gene is a member of the RP/EB family.,MAPRE1,EB1,Signal Transduction,Cell Biology & Developmental Biology,Cell Cycle,Centrosome,Cytoskeleton,Microtubules,MAPRE1</p>
Molecular Weight:	29 kDa
Gene ID:	22919
UniProt:	Q15691
Pathways:	M Phase

Application Details

Application Notes:	WB,1:500 - 1:2000
Restrictions:	For Research Use only

Handling

Buffer:	PBS with 0.02 % sodium azide,50 % glycerol, pH 7.3.
Preservative:	Sodium azide
Precaution of Use:	This product contains Sodium azide: a POISONOUS AND HAZARDOUS SUBSTANCE which should be handled by trained staff only.
Storage:	-20 °C
Storage Comment:	Store at -20°C. Avoid freeze / thaw cycles.



Western Blotting

Image 1. Western blot analysis of extracts of various cell lines, using M antibody (ABIN1679634, ABIN3016320, ABIN3016321 and ABIN6219721) at 1:1000 dilution. Secondary antibody: HRP Goat Anti-Rabbit IgG (H+L) (ABIN1684268 and ABIN3020597) at 1:10000 dilution. Lysates/proteins: 25 µg per lane. Blocking buffer: 3 % nonfat dry milk in TBST. Detection: ECL Basic Kit (RM00020). Exposure time: 10s.