



[Go to Product page](#)

Datasheet for ABIN1679646  
**anti-EDF1 antibody (AA 1-148)**

8 Images

Overview

Quantity:	100 µg
Target:	EDF1
Binding Specificity:	AA 1-148
Reactivity:	Human
Host:	Rabbit
Clonality:	Polyclonal
Conjugate:	This EDF1 antibody is un-conjugated
Application:	Western Blotting (WB), Immunohistochemistry (IHC), Immunofluorescence (IF)

Product Details

Immunogen:	Recombinant fusion protein containing a sequence corresponding to amino acids 1-148 of human EDF1 (NP_003783.1).
Sequence:	MAESDWDTVT VLRKKGPTAA QAKSKQAILA AQRGDEVET SKKWAAGQNK QHSITKNTAK LDRETEELHH DRVTLEVGKV IQQGRQSKGL TQKDLATKIN EKPQVIADYE SGRAIPNNQV LGKIERAIGL KLRGKDIGKP IEKGPRAK
Isotype:	IgG
Cross-Reactivity:	Human, Mouse, Rat
Characteristics:	Polyclonal Antibodies
Purification:	Affinity purification

## Target Details

---

Target:	EDF1
Alternative Name:	EDF1 ( <a href="#">EDF1 Products</a> )
Background:	This gene encodes a protein that may regulate endothelial cell differentiation, lipid metabolism, and hormone-induced cardiomyocyte hypertrophy. The encoded protein has also been found to act as a transcriptional coactivator by interconnecting the general transcription factor TATA element-binding protein (TBP) and gene-specific activators. Alternate splicing results in multiple transcript variants.,EDF1,CFAP280,EDF-1,MBF1,Epigenetics & Nuclear Signaling,Transcription Factors,RNA Binding,Signal Transduction,Endocrine & Metabolism,Lipid Metabolism,EDF1
Molecular Weight:	15 kDa/16 kDa
Gene ID:	8721
UniProt:	<a href="#">O60869</a>

## Application Details

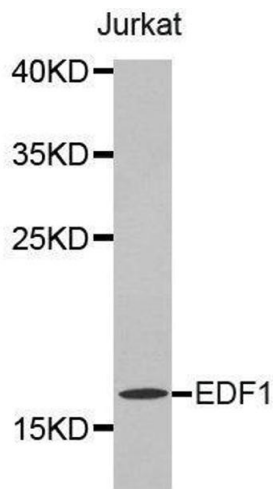
---

Application Notes:	WB,1:500 - 1:2000,IHC,1:50 - 1:100,IF,1:50 - 1:100
Restrictions:	For Research Use only

## Handling

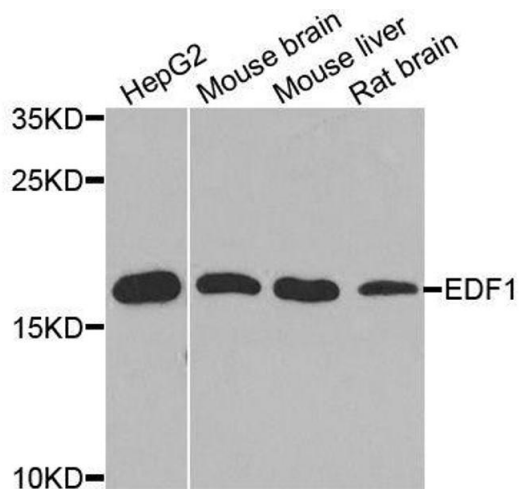
---

Buffer:	PBS with 0.02 % sodium azide,50 % glycerol, pH 7.3.
Preservative:	Sodium azide
Precaution of Use:	This product contains Sodium azide: a POISONOUS AND HAZARDOUS SUBSTANCE which should be handled by trained staff only.
Storage:	-20 °C
Storage Comment:	Store at -20°C. Avoid freeze / thaw cycles.



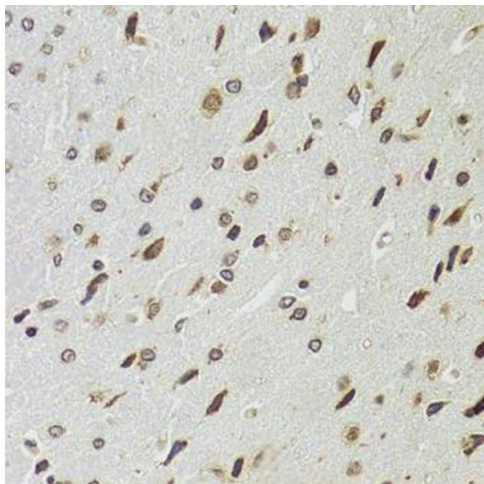
#### Western Blotting

**Image 1.** Western blot analysis of extracts of Jurkat cell lines, using EDF1 antibody.



#### Western Blotting

**Image 2.** Western blot analysis of extracts of various cell lines, using EDF1 antibody.



#### Immunohistochemistry (Paraffin-embedded Sections)

**Image 3.** Immunohistochemistry of paraffin-embedded rat brain using EDF1 antibody.

Please check the [product details page](#) for more images. Overall 8 images are available for ABIN1679646.