

Datasheet for ABIN1679652
anti-EEA1 antibody (AA 1182-1411)



[Go to Product page](#)

5 Images

Overview

Quantity:	100 µg
Target:	EEA1
Binding Specificity:	AA 1182-1411
Reactivity:	Human
Host:	Rabbit
Clonality:	Polyclonal
Conjugate:	This EEA1 antibody is un-conjugated
Application:	Western Blotting (WB), Immunohistochemistry (IHC)

Product Details

Immunogen:	Recombinant fusion protein containing a sequence corresponding to amino acids 1182-1411 of human EEA1 (NP_003557.2).
Sequence:	LKAAVEQEKR NQQILKDQVK KEEEEELKKEF IEKEAKLHSE IKEKEVGMKK HEENEAKLTM QITALNENLG TVKKEWQSSQ RRVSELEKQT DDLRGEIAVL EATVQNNQDE RRALLERCLK GEGEIEKLQT KVLELQRKLD NTTAAVQELG RENQSLQIKH TQALNRKWAE DNEVQNCMAC GKGFSVTVRR HHCRQCGNIF CAECSAKNAL TPSSKKPVRV CDACFNDLQG
Isotype:	IgG
Cross-Reactivity:	Human, Mouse, Rat
Characteristics:	Polyclonal Antibodies
Purification:	Affinity purification

Target Details

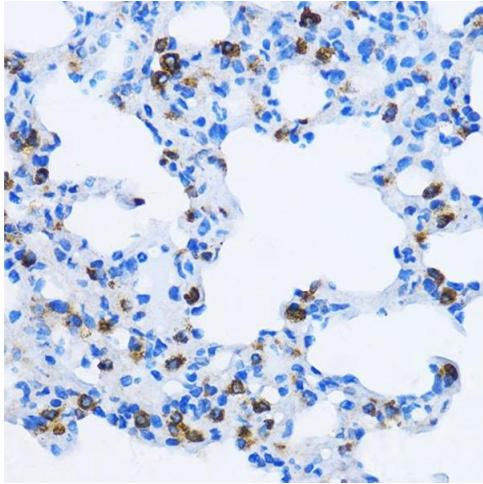
Target:	EEA1
Alternative Name:	EEA1 (EEA1 Products)
Background:	Binds phospholipid vesicles containing phosphatidylinositol 3-phosphate and participates in endosomal trafficking.,EEA1,MST105,MSTP105,ZFYVE2,Signal Transduction,Neuroscience,Cell Type Marker,Neuron marker,EEA1
Molecular Weight:	162 kDa
Gene ID:	8411
UniProt:	Q15075
Pathways:	Toll-Like Receptors Cascades

Application Details

Application Notes:	WB,1:500 - 1:2000,IHC,1:50 - 1:200
Restrictions:	For Research Use only

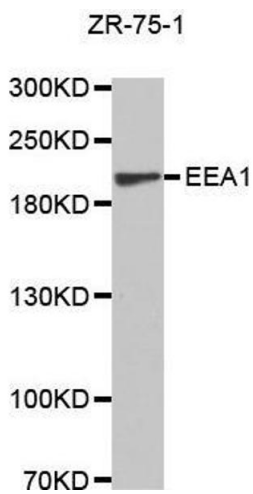
Handling

Buffer:	PBS with 0.02 % sodium azide,50 % glycerol, pH 7.3.
Preservative:	Sodium azide
Precaution of Use:	This product contains Sodium azide: a POISONOUS AND HAZARDOUS SUBSTANCE which should be handled by trained staff only.
Storage:	-20 °C
Storage Comment:	Store at -20°C. Avoid freeze / thaw cycles.



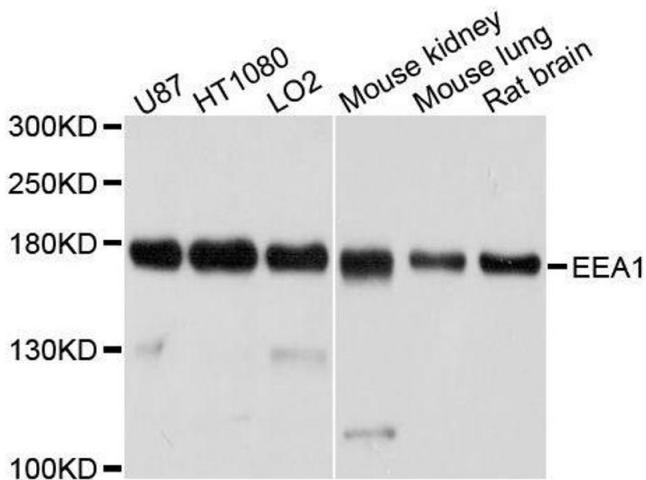
Immunohistochemistry

Image 1. Immunohistochemistry of paraffin-embedded Rat lung using EE antibody at dilution of 1:100 (40x lens). Perform microwave antigen retrieval with 10 mM PBS buffer pH 7.2 before commencing with IHC staining protocol.



Western Blotting

Image 2.



Western Blotting

Image 3. Western blot analysis of extracts of various cell lines, using EEA1 antibody.

Please check the [product details page](#) for more images. Overall 5 images are available for ABIN1679652.