



Datasheet for ABIN1680028  
**anti-Flotillin 1 antibody**



[Go to Product page](#)

5 Images

### Overview

Quantity:	20 µL
Target:	Flotillin 1 (FLOT1)
Reactivity:	Human
Host:	Rabbit
Clonality:	Monoclonal
Conjugate:	This Flotillin 1 antibody is un-conjugated
Application:	Western Blotting (WB), Immunohistochemistry (IHC)

### Product Details

Immunogen:	A synthesized peptide derived from human Flotillin 1
Isotype:	IgG
Cross-Reactivity:	Human, Mouse, Rat
Characteristics:	Monoclonal Antibodies
Purification:	Affinity purification

### Target Details

Target:	Flotillin 1 (FLOT1)
Alternative Name:	FLOT1 ( <a href="#">FLOT1 Products</a> )
Background:	This gene encodes an protein that localizes to the caveolae, which are small domains on the inner cell membranes. This protein plays a role in vesicle trafficking and cell morphology.

## Target Details

Alternative splicing results in multiple transcript variants. [provided by RefSeq, Jan 2016],FLOT1, flotillin-1,Cell Biology & Developmental Biology,Cell Cycle,Cell Cycle\_Centrosome,Cytoskeleton,Cytoskeleton\_Microfilaments,Endocrine & Metabolism,Insulin Receptor Signaling Pathway,Signal Transduction,FLOT1

Molecular Weight: 48 kDa

Gene ID: 10211

UniProt: [O75955](#)

## Application Details

Application Notes: WB,1:500 - 1:2000, IHC,1:50 - 1:200

Restrictions: For Research Use only

## Handling

Buffer: PBS with 0.02 % sodium azide,0.05 % BSA,50 % glycerol, pH 7.3.

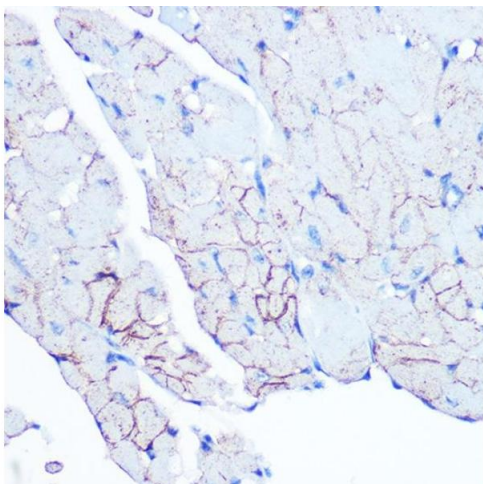
Preservative: Sodium azide

Precaution of Use: This product contains Sodium azide: a POISONOUS AND HAZARDOUS SUBSTANCE which should be handled by trained staff only.

Storage: -20 °C

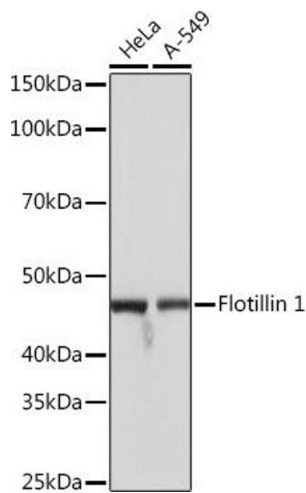
Storage Comment: Store at -20°C. Avoid freeze / thaw cycles.

## Images



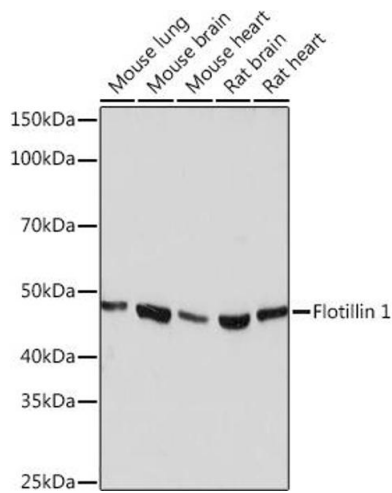
### Immunohistochemistry

**Image 1.** Immunohistochemistry of paraffin-embedded mouse heart using Flotillin 1 Rabbit mAb (ABIN3017206, ABIN3017207, ABIN1680028 and ABIN1680029) at dilution of 1:100 (40x lens). Perform microwave antigen retrieval with 10 mM PBS buffer pH 7.2 before commencing with IHC staining protocol.



### Western Blotting

**Image 2.** Western blot analysis of extracts of various cell lines, using Flotillin 1 Rabbit mAb (ABIN3017206, ABIN3017207, ABIN1680028 and ABIN1680029) at 1:1000 dilution. Secondary antibody: HRP Goat Anti-Rabbit IgG (H+L) (ABIN1684268 and ABIN3020597) at 1:10000 dilution. Lysates/proteins: 25 µg per lane. Blocking buffer: 3 % nonfat dry milk in TBST. Detection: ECL Basic Kit (RM00020). Exposure time: 1s.



### Western Blotting

**Image 3.** Western blot analysis of extracts of various cell lines, using Flotillin 1 Rabbit mAb (ABIN3017206, ABIN3017207, ABIN1680028 and ABIN1680029) at 1:1000 dilution. Secondary antibody: HRP Goat Anti-Rabbit IgG (H+L) (ABIN1684268 and ABIN3020597) at 1:10000 dilution. Lysates/proteins: 25 µg per lane. Blocking buffer: 3 % nonfat dry milk in TBST. Detection: ECL Basic Kit (RM00020). Exposure time: 3 min.

Please check the [product details page](#) for more images. Overall 5 images are available for ABIN1680028.