



Datasheet for ABIN1680084  
**anti-GPS2 antibody**



[Go to Product page](#)

2 Images

Overview

Quantity:	100 µg
Target:	GPS2
Reactivity:	Human
Host:	Rabbit
Clonality:	Polyclonal
Conjugate:	This GPS2 antibody is un-conjugated
Application:	Western Blotting (WB), Immunohistochemistry (IHC)

Product Details

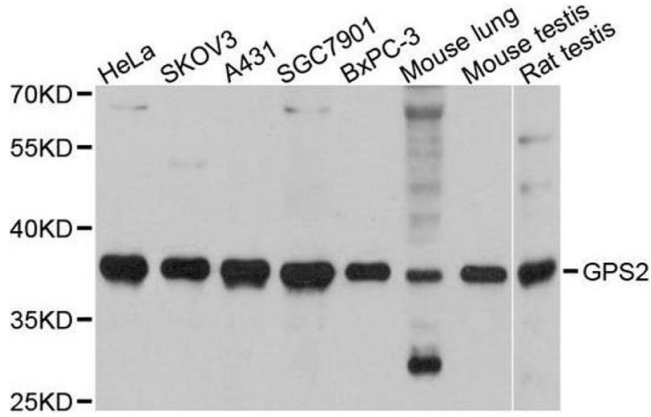
Immunogen:	Recombinant Protein
Cross-Reactivity:	Mouse (Murine), Rat (Rattus)

Target Details

Target:	GPS2
Alternative Name:	GPS2 ( <a href="#">GPS2 Products</a> )
Molecular Weight:	327 kDa
Gene ID:	2874
UniProt:	<a href="#">Q13227</a>

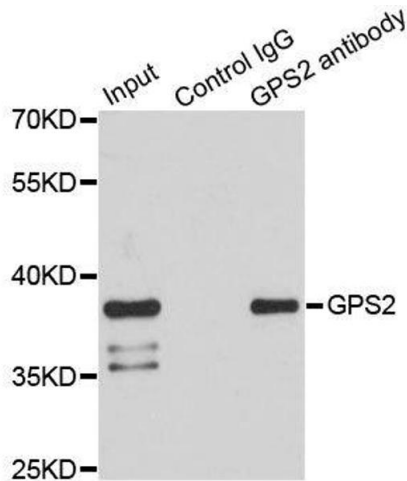
Restrictions: For Research Use only

Images



Western Blotting

**Image 1.** Western blot analysis of extracts of various cell lines, using GPS2 antibody.



Immunoprecipitation

**Image 2.** Immunoprecipitation analysis of 150ug extracts of HeLa cells using 3ug GPS2 antibody.