

Datasheet for ABIN1680115
anti-GRK5 antibody (AA 371-590)

5 Images

[Go to Product page](#)

Overview

Quantity:	100 µg
Target:	GRK5
Binding Specificity:	AA 371-590
Reactivity:	Human
Host:	Rabbit
Clonality:	Polyclonal
Conjugate:	This GRK5 antibody is un-conjugated
Application:	Western Blotting (WB), Immunohistochemistry (IHC), Immunofluorescence (IF)

Product Details

Immunogen:	Recombinant fusion protein containing a sequence corresponding to amino acids 371-590 of human GRK5 (NP_005299.1).
Sequence:	LGCLİYEMIE GQSPFRGRKE KVKREEVDRR VLETEEVYSH KFSEEAKSIC KMLLTKDAKQ RLGCQEEGAA EVKRHPFFRN MNFKRLEAGM LDPPFVPDPR AVYCKDVLDI EQFSTVKGVN LDHTDDDFYS KFSTGSVSIP WQNEMIETEC FKELNVFGPN GTLPPDLNRN HPPEPPKKGL LQRLFQRQHQ NNSKSSPSSK TSFNHHINSN HVSSNSTGSS
Isotype:	IgG
Cross-Reactivity:	Human, Mouse, Rat
Characteristics:	Polyclonal Antibodies
Purification:	Affinity purification

Target Details

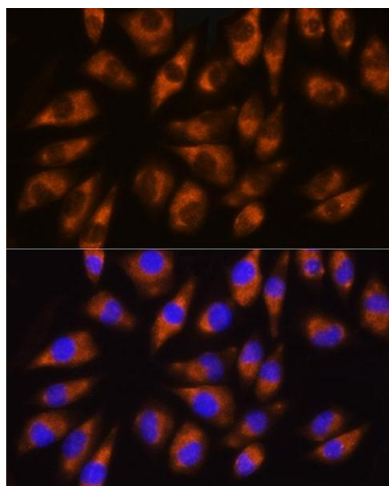
Target:	GRK5
Alternative Name:	GRK5 (GRK5 Products)
Background:	This gene encodes a member of the guanine nucleotide-binding protein (G protein)-coupled receptor kinase subfamily of the Ser/Thr protein kinase family. The protein phosphorylates the activated forms of G protein-coupled receptors thus initiating their deactivation. It has also been shown to play a role in regulating the motility of polymorphonuclear leukocytes (PMNs).,GRK5,GPRK5,Signal Transduction,G protein signaling,G-Protein-Coupled Receptors(GPCR),Kinase,Immunology & Inflammation,Cardiovascular,Blood,Blood Pressure regulation,Cardiovascular diseases,Hypertension,GRK5
Molecular Weight:	68 kDa
Gene ID:	2869
UniProt:	P34947
Pathways:	Myometrial Relaxation and Contraction , Regulation of G-Protein Coupled Receptor Protein Signaling

Application Details

Application Notes:	WB,1:500 - 1:2000,IHC,1:50 - 1:200,IF,1:50 - 1:200
Restrictions:	For Research Use only

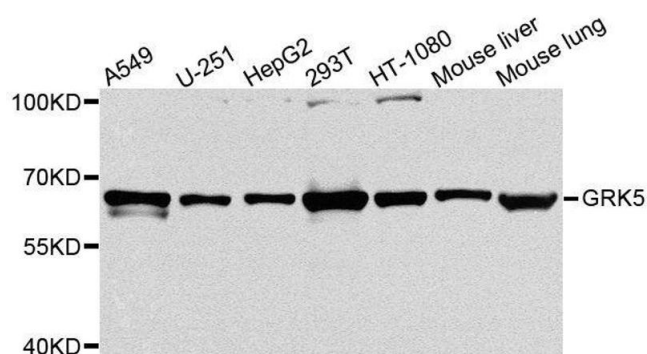
Handling

Buffer:	PBS with 0.02 % sodium azide,50 % glycerol, pH 7.3.
Preservative:	Sodium azide
Precaution of Use:	This product contains Sodium azide: a POISONOUS AND HAZARDOUS SUBSTANCE which should be handled by trained staff only.
Storage:	-20 °C
Storage Comment:	Store at -20°C. Avoid freeze / thaw cycles.



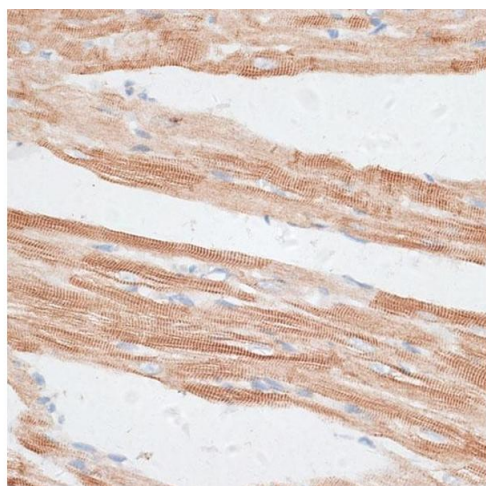
Immunofluorescence

Image 1. Immunofluorescence analysis of L929 cells using GRK5 Rabbit pAb (ABIN1680115, ABIN3018251, ABIN3018252 and ABIN6220413) at dilution of 1:100 (40x lens). Blue: DAPI for nuclear staining.



Western Blotting

Image 2. Western blot analysis of extracts of various cell lines, using GRK5 antibody.



Immunohistochemistry

Image 3. Immunohistochemistry of paraffin-embedded rat heart using GRK5 antibody (ABIN1680115, ABIN3018251, ABIN3018252 and ABIN6220413) at dilution of 1:100 (40x lens). Perform microwave antigen retrieval with 10 mM PBS buffer pH 7.2 before commencing with IHC staining protocol.

Please check the [product details page](#) for more images. Overall 5 images are available for ABIN1680115.