

Datasheet for ABIN1680142
anti-GTPBP4 antibody (AA 385-634)

6 Images

[Go to Product page](#)

Overview

Quantity:	100 µg
Target:	GTPBP4
Binding Specificity:	AA 385-634
Reactivity:	Human
Host:	Rabbit
Clonality:	Polyclonal
Conjugate:	This GTPBP4 antibody is un-conjugated
Application:	Western Blotting (WB), Immunohistochemistry (IHC), Immunofluorescence (IF)

Product Details

Immunogen:	Recombinant fusion protein containing a sequence corresponding to amino acids 385-634 of human GTPBP4 (NP_036473.2).
Sequence:	RKRMETEESR KKRERDLELE MGDDYILDQ KYWDLMLNLS KHKIPEIWE GHNIADYIDP AIMKKLEELE KEEELRTAAG EYDSVSESED EEMLEIRQLA KQIREKKKLK ILESKEKNTQ GPRMPRTAKK VQRTVLEKEM RSLGVDMD DK DDAH YAVQAR RSR SITRKRK REDSAPPSSV ARSGSCSRTP RDVSGLRDVK MVKKAKTMMK NAQKKMNRLG KKGEADRHVF DMKPKHLLSG KRKAGKKDRR
Isotype:	IgG
Cross-Reactivity:	Human, Mouse, Rat
Characteristics:	Polyclonal Antibodies
Purification:	Affinity purification

Target Details

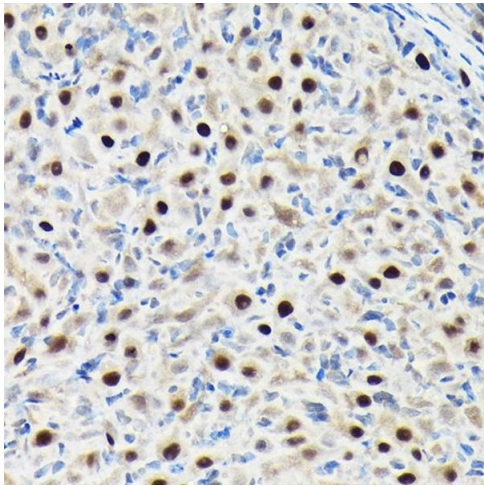
Target:	GTPBP4
Alternative Name:	GTPBP4 (GTPBP4 Products)
Background:	<p>GTP-binding proteins are GTPases and function as molecular switches that can flip between two states: active, when GTP is bound, and inactive, when GDP is bound. 'Active' in this context usually means that the molecule acts as a signal to trigger other events in the cell. When an extracellular ligand binds to a G-protein-linked receptor, the receptor changes its conformation and switches on the trimeric G proteins that associate with it by causing them to eject their GDP and replace it with GTP. The switch is turned off when the G protein hydrolyzes its own bound GTP, converting it back to GDP. But before that occurs, the active protein has an opportunity to diffuse away from the receptor and deliver its message for a prolonged period to its downstream target.</p> <p>GTPBP4,CRFG,NGB,NOG1,Epigenetics & Nuclear Signaling,RNA Binding,Cancer,Tumor suppressors,Signal Transduction,GTPBP4</p>
Molecular Weight:	60 kDa/68 kDa/73 kDa
Gene ID:	23560
UniProt:	Q9BZE4

Application Details

Application Notes:	WB,1:1000 - 1:2000,IHC,1:50 - 1:200,IF,1:50 - 1:200
Restrictions:	For Research Use only

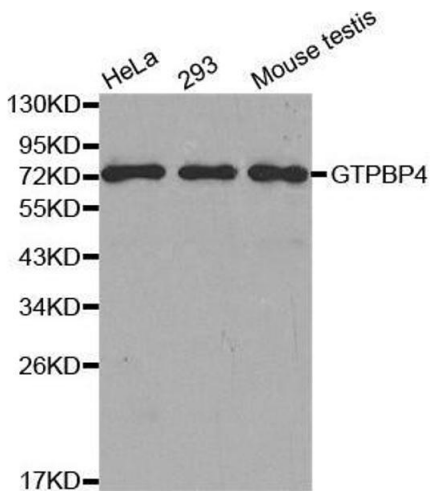
Handling

Buffer:	PBS with 0.02 % sodium azide,50 % glycerol, pH 7.3.
Preservative:	Sodium azide
Precaution of Use:	This product contains Sodium azide: a POISONOUS AND HAZARDOUS SUBSTANCE which should be handled by trained staff only.
Storage:	-20 °C
Storage Comment:	Store at -20°C. Avoid freeze / thaw cycles.



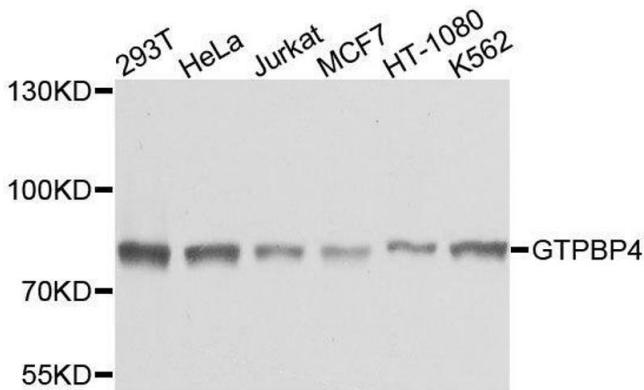
Immunohistochemistry

Image 1. Immunohistochemistry of paraffin-embedded rat ovary using GTPBP4 Rabbit pAb (ABIN1680142, ABIN3019054, ABIN3019055 and ABIN6220689) at dilution of 1:50 (40x lens). Perform high pressure antigen retrieval with 10 mM citrate buffer pH 6.0 before commencing with IHC staining protocol.



Western Blotting

Image 2. Western blot analysis of extracts of various cell lines, using GTPBP4 antibody.



Western Blotting

Image 3. Western blot analysis of extracts of various cell lines, using GTPBP4 antibody.

Please check the [product details page](#) for more images. Overall 6 images are available for ABIN1680142.