

Datasheet for ABIN1680154

**anti-FGF21 antibody**

5 Images

[Go to Product page](#)

## Overview

Quantity:	100 µg
Target:	FGF21
Reactivity:	Human
Host:	Rabbit
Clonality:	Monoclonal
Conjugate:	This FGF21 antibody is un-conjugated
Application:	Western Blotting (WB), Immunohistochemistry (IHC)

## Product Details

Immunogen:	A synthesized peptide derived from human FGF21
Isotype:	IgG
Cross-Reactivity:	Human, Mouse, Rat
Characteristics:	Monoclonal Antibodies
Purification:	Affinity purification

## Target Details

Target:	FGF21
Alternative Name:	FGF21 ( <a href="#">FGF21 Products</a> )
Background:	This gene encodes a member of the fibroblast growth factor (FGF) family. FGF family members possess broad mitogenic and cell survival activities and are involved in a variety of

## Target Details

biological processes. This protein is a secreted endocrine factor that functions as a major metabolic regulator. The encoded protein stimulates the uptake of glucose in adipose tissue. [provided by RefSeq, Mar 2016],FGF21, fibroblast growth factor 21,Angiogenesis,Cancer,Cardiovascular,Cell Biology & Developmental Biology,Growth factors,Signal Transduction,FGF21

Molecular Weight: 22 kDa

Gene ID: 26291

UniProt: [Q9NSA1](#)

Pathways: [RTK Signaling](#)

## Application Details

Application Notes: WB,1:500 - 1:2000,IHC,1:50 - 1:200

Restrictions: For Research Use only

## Handling

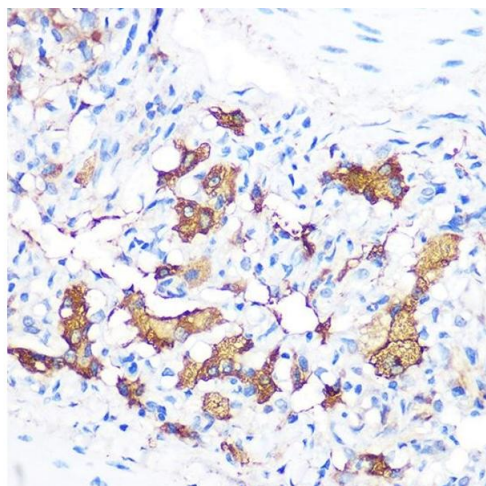
Buffer: PBS with 0.02 % sodium azide,0.05 % BSA,50 % glycerol, pH 7.3.

Preservative: Sodium azide

Precaution of Use: This product contains Sodium azide: a POISONOUS AND HAZARDOUS SUBSTANCE which should be handled by trained staff only.

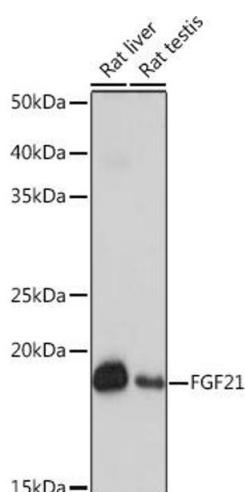
Storage: -20 °C

Storage Comment: Store at -20°C. Avoid freeze / thaw cycles.



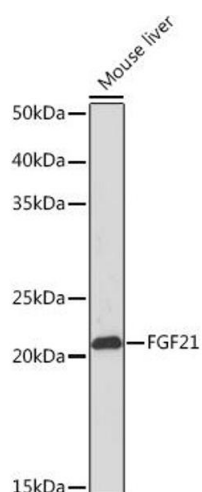
### Immunohistochemistry

**Image 1.** Immunohistochemistry of paraffin-embedded rat lung using FGF21 Rabbit mAb (ABIN1680154, ABIN3018263, ABIN3018264 and ABIN7101589) at dilution of 1:100 (40x lens). Perform microwave antigen retrieval with 10 mM PBS buffer pH 7.2 before commencing with IHC staining protocol.



### Western Blotting

**Image 2.** Western blot analysis of extracts of various cell lines, using FGF21 Rabbit mAb (ABIN1680154, ABIN3018263, ABIN3018264 and ABIN7101589) at 1:1000 dilution. Secondary antibody: HRP Goat Anti-Rabbit IgG (H+L) (ABIN1684268 and ABIN3020597) at 1:10000 dilution. Lysates/proteins: 25 µg per lane. Blocking buffer: 3 % nonfat dry milk in TBST. Detection: ECL Basic Kit (RM00020). Exposure time: 1s.



### Western Blotting

**Image 3.** Western blot analysis of extracts of Mouse liver, using FGF21 Rabbit mAb (ABIN1680154, ABIN3018263, ABIN3018264 and ABIN7101589) at 1:1000 dilution. Secondary antibody: HRP Goat Anti-Rabbit IgG (H+L) (ABIN1684268 and ABIN3020597) at 1:10000 dilution. Lysates/proteins: 25 µg per lane. Blocking buffer: 3 % nonfat dry milk in TBST. Detection: ECL Basic Kit (RM00020). Exposure time: 30s.

Please check the [product details page](#) for more images. Overall 5 images are available for ABIN1680154.