

Datasheet for ABIN1680439
anti-IL15RA antibody (AA 31-205)[Go to Product page](#)

3 Images

Overview

Quantity:	100 µg
Target:	IL15RA
Binding Specificity:	AA 31-205
Reactivity:	Human
Host:	Rabbit
Clonality:	Polyclonal
Conjugate:	This IL15RA antibody is un-conjugated
Application:	Western Blotting (WB), Immunofluorescence (IF)

Product Details

Immunogen:	Recombinant fusion protein containing a sequence corresponding to amino acids 31-205 of human IL15RA (NP_002180.1).
Isotype:	IgG
Cross-Reactivity:	Human, Mouse, Rat
Characteristics:	Polyclonal Antibodies

Target Details

Target:	IL15RA
Alternative Name:	IL15RA (IL15RA Products)
Background:	This gene encodes a cytokine receptor that specifically binds interleukin 15 (IL15) with high

Target Details

affinity. The receptors of IL15 and IL2 share two subunits, IL2R beta and IL2R gamma. This forms the basis of many overlapping biological activities of IL15 and IL2. The protein encoded by this gene is structurally related to IL2R alpha, an additional IL2-specific alpha subunit necessary for high affinity IL2 binding. Unlike IL2RA, IL15RA is capable of binding IL15 with high affinity independent of other subunits, which suggests distinct roles between IL15 and IL2. This receptor is reported to enhance cell proliferation and expression of apoptosis inhibitor BCL2L1/BCL2-XL and BCL2. Multiple alternatively spliced transcript variants of this gene have been reported.,IL15RA,CD215,Signal Transduction,Cell Biology & Developmental Biology,Apoptosis,Endocrine & Metabolism,Endocrine and metabolic diseases,Obesity,Immunology & Inflammation,CD markers,IL15RA

Molecular Weight: 15-28 kDa

Gene ID: 3601

UniProt: [Q13261](#)

Pathways: [JAK-STAT Signaling](#)

Application Details

Application Notes: WB,1:500 - 1:1000,IF,1:50 - 1:200

Restrictions: For Research Use only

Handling

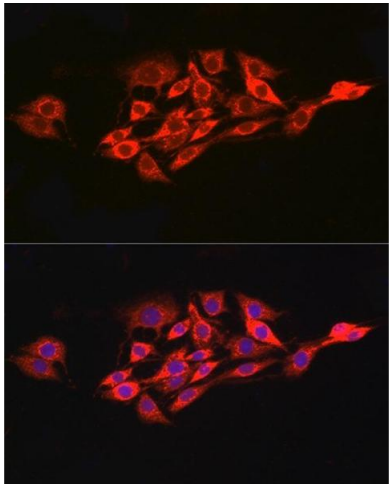
Buffer: PBS with 0.02 % sodium azide,50 % glycerol, pH 7.3.

Preservative: Sodium azide

Precaution of Use: This product contains Sodium azide: a POISONOUS AND HAZARDOUS SUBSTANCE which should be handled by trained staff only.

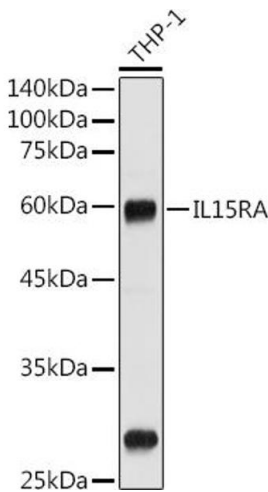
Storage: -20 °C

Storage Comment: Store at -20°C. Avoid freeze / thaw cycles.



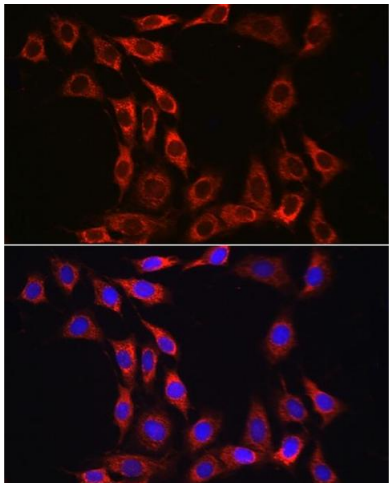
Immunofluorescence

Image 1. Immunofluorescence analysis of PC-12 cells using IL15RA Rabbit pAb (ABIN3017117, ABIN1680439 and ABIN7101500) at dilution of 1:100 (40x lens). Blue: DAPI for nuclear staining.



Western Blotting

Image 2. Western blot analysis of extracts of THP-1 cells, using IL15RA antibody (ABIN3017117, ABIN1680439 and ABIN7101500) at 1:1000 dilution. Secondary antibody: HRP Goat Anti-Rabbit IgG (H+L) (ABIN1684268 and ABIN3020597) at 1:10000 dilution. Lysates/proteins: 25 µg per lane. Blocking buffer: 3 % nonfat dry milk in TBST. Detection: ECL Basic Kit (RM00020). Exposure time: 180s.



Immunofluorescence

Image 3. Immunofluorescence analysis of NIH/3T3 cells using IL15RA Rabbit pAb (ABIN3017117, ABIN1680439 and ABIN7101500) at dilution of 1:100 (40x lens). Blue: DAPI for nuclear staining.