

Datasheet for ABIN1680448  
**anti-IL1RAPL1 antibody (AA 130-210)**[Go to Product page](#)

## 2 Images

## Overview

Quantity:	100 µg
Target:	IL1RAPL1
Binding Specificity:	AA 130-210
Reactivity:	Human
Host:	Rabbit
Clonality:	Polyclonal
Conjugate:	This IL1RAPL1 antibody is un-conjugated
Application:	Western Blotting (WB)

## Product Details

Immunogen:	Recombinant fusion protein containing a sequence corresponding to amino acids 130-210 of human IL1RAPL1 (NP_055086.1).
Sequence:	SISLTVGEND TGLCYNSKMK YFEKAELSKS KEISCRDIED FLLPTREPEI LWYKECRTKT WRPSIVFKRD TLLIREVRED D
Isotype:	IgG
Cross-Reactivity:	Human, Mouse, Rat
Characteristics:	Polyclonal Antibodies

## Target Details

Target:	IL1RAPL1
---------	----------

## Target Details

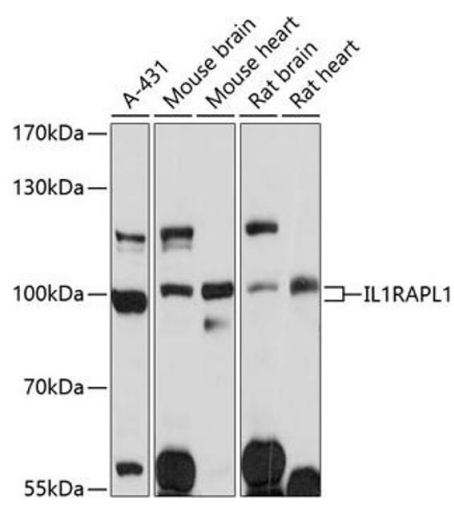
Alternative Name:	IL1RAPL1 ( <a href="#">IL1RAPL1 Products</a> )
Background:	<p>The protein encoded by this gene is a member of the interleukin 1 receptor family and is similar to the interleukin 1 accessory proteins. It is most closely related to interleukin 1 receptor accessory protein-like 2 (IL1RAPL2). This gene and IL1RAPL2 are located at a region on chromosome X that is associated with X-linked non-syndromic mental retardation. Deletions and mutations in this gene were found in patients with mental retardation. This gene is expressed at a high level in post-natal brain structures involved in the hippocampal memory system, which suggests a specialized role in the physiological processes underlying memory and learning abilities.,IL1RAPL1,IL1R8,IL1RAPL,MRX10,MRX21,MRX34,OPHN4,TIGIRR-2,Neuroscience,Calcium Signaling,IL1RAPL1</p>
Molecular Weight:	79 kDa
Gene ID:	11141
UniProt:	<a href="#">Q9NZN1</a>
Pathways:	<a href="#">Synaptic Membrane</a> , <a href="#">Growth Factor Binding</a>

## Application Details

Application Notes:	WB,1:500 - 1:2000
Restrictions:	For Research Use only

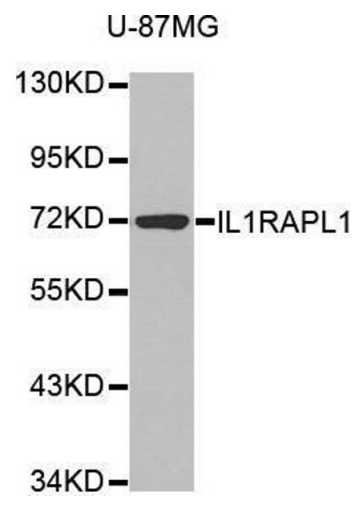
## Handling

Buffer:	PBS with 0.02 % sodium azide,50 % glycerol, pH 7.3.
Preservative:	Sodium azide
Precaution of Use:	This product contains Sodium azide: a POISONOUS AND HAZARDOUS SUBSTANCE which should be handled by trained staff only.
Storage:	-20 °C
Storage Comment:	Store at -20°C. Avoid freeze / thaw cycles.



Western Blotting

**Image 1.** Western blot analysis of extracts of various cell lines, using IL1R antibody (ABIN1680448, ABIN3017765, ABIN3017766 and ABIN6220239) at 1:3000 dilution. Secondary antibody: HRP Goat Anti-Rabbit IgG (H+L) (ABIN1684268 and ABIN3020597) at 1:10000 dilution. Lysates/proteins: 25 µg per lane. Blocking buffer: 3 % nonfat dry milk in TBST. Detection: ECL Basic Kit (RM00020). Exposure time: 30s.



Western Blotting

**Image 2.** Western blot analysis of extracts of various cell lines, using IL1RAPL1 antibody.