

Datasheet for ABIN1680531

anti-Vinculin antibody

4 Images

[Go to Product page](#)

Overview

Quantity:	100 µg
Target:	Vinculin (VCL)
Reactivity:	Human
Host:	Rabbit
Clonality:	Monoclonal
Conjugate:	This Vinculin antibody is un-conjugated
Application:	Western Blotting (WB), Immunohistochemistry (IHC), Immunoprecipitation (IP)

Product Details

Immunogen:	A synthesized peptide derived from human Vinculin
Isotype:	IgG
Cross-Reactivity:	Human, Mouse, Rat
Characteristics:	Monoclonal Antibodies
Purification:	Affinity purification

Target Details

Target:	Vinculin (VCL)
Alternative Name:	VCL (VCL Products)
Background:	Vinculin is a cytoskeletal protein associated with cell-cell and cell-matrix junctions, where it is thought to function as one of several interacting proteins involved in anchoring F-actin to the

Target Details

membrane. Defects in VCL are the cause of cardiomyopathy dilated type 1W. Dilated cardiomyopathy is a disorder characterized by ventricular dilation and impaired systolic function, resulting in congestive heart failure and arrhythmia. Multiple alternatively spliced transcript variants have been found for this gene, but the biological validity of some variants has not been determined. [provided by RefSeq, Jul 2008],CMD1W, CMH15, HEL114, MV, MVCL,Cardiovascular,Cell Biology & Developmental Biology,Cytoskeleton,Cytoskeleton_Actins,Cytoskeleton_Microfilaments,Heart,Heart_Cardiac arrhythmias,Heart_Contractility,Signal Transduction,VCL

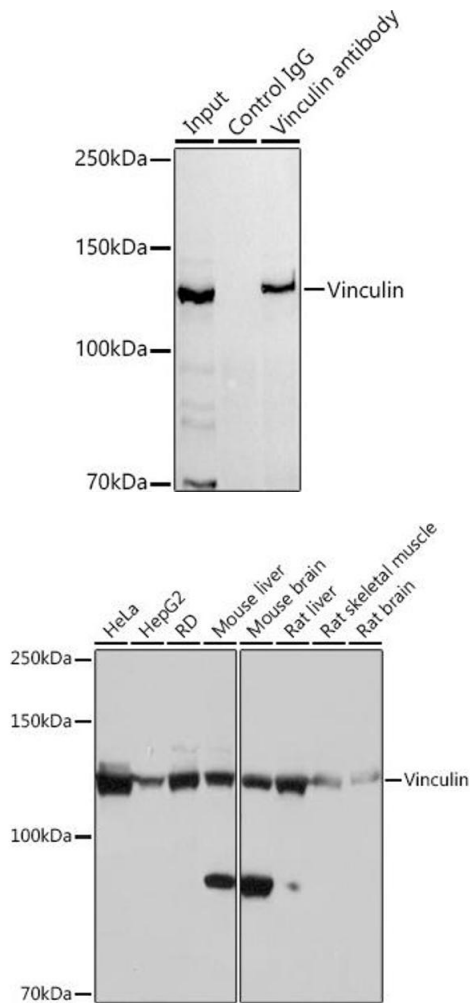
Molecular Weight:	125 kDa
Gene ID:	7414
UniProt:	P18206
Pathways:	Cell-Cell Junction Organization , Maintenance of Protein Location , Signaling Events mediated by VEGFR1 and VEGFR2

Application Details

Application Notes:	WB,1:500 - 1:2000, IHC,1:50 - 1:200,IP,1:50 - 1:200
Restrictions:	For Research Use only

Handling

Buffer:	PBS with 0.02 % sodium azide,0.05 % BSA,50 % glycerol, pH 7.3.
Preservative:	Sodium azide
Precaution of Use:	This product contains Sodium azide: a POISONOUS AND HAZARDOUS SUBSTANCE which should be handled by trained staff only.
Storage:	-20 °C
Storage Comment:	Store at -20°C. Avoid freeze / thaw cycles.



Immunoprecipitation

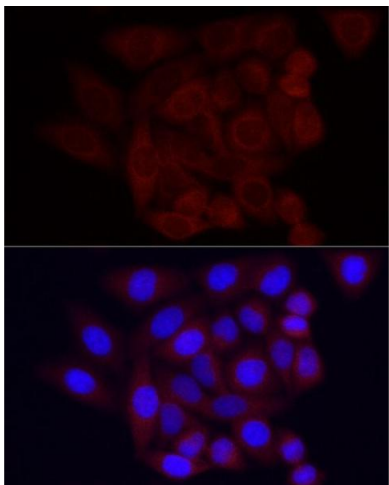
Image 1. Immunoprecipitation analysis of 300 µg extracts of HeLa cells using 3 µg Vinculin antibody (ABIN3016604, ABIN3016605, ABIN1680530 and ABIN1680531). Western blot was performed from the immunoprecipitate using Vinculin antibody (ABIN3016604, ABIN3016605, ABIN1680530 and ABIN1680531) at a dilution of 1:1000.

Western Blotting

Image 2. Western blot analysis of extracts of various cell lines, using Vinculin Rabbit mAb (ABIN3016604, ABIN3016605, ABIN1680530 and ABIN1680531) at 1:1000 dilution. Secondary antibody: HRP Goat Anti-Rabbit IgG (H+L) (ABIN1684268 and ABIN3020597) at 1:10000 dilution. Lysates/proteins: 25 µg per lane. Blocking buffer: 3 % nonfat dry milk in TBST. Detection: ECL Basic Kit (RM00020). Exposure time: 1 s.

Immunofluorescence

Image 3. Immunofluorescence analysis of HeLa using Vinculin Rabbit mAb (ABIN3016604, ABIN3016605, ABIN1680530 and ABIN1680531) at dilution of 1:100 (40x lens). Blue: DAPI for nuclear staining.



Please check the [product details page](#) for more images. Overall 4 images are available for ABIN1680531.