

Datasheet for ABIN1680536

anti-FHL1 antibody**2** Images[Go to Product page](#)

Overview

Quantity:	100 µg
Target:	FHL1
Reactivity:	Human
Host:	Rabbit
Clonality:	Monoclonal
Conjugate:	This FHL1 antibody is un-conjugated
Application:	Western Blotting (WB), Immunohistochemistry (IHC)

Product Details

Immunogen:	A synthesized peptide derived from human FHL1
Isotype:	IgG
Cross-Reactivity:	Human
Characteristics:	Monoclonal Antibodies
Purification:	Affinity purification

Target Details

Target:	FHL1
Alternative Name:	FHL1 (FHL1 Products)
Background:	This gene encodes a member of the four-and-a-half-LIM-only protein family. Family members contain two highly conserved, tandemly arranged, zinc finger domains with four highly

Target Details

conserved cysteines binding a zinc atom in each zinc finger. Expression of these family members occurs in a cell- and tissue-specific mode and these proteins are involved in many cellular processes. Mutations in this gene have been found in patients with Emery-Dreifuss muscular dystrophy. Multiple alternately spliced transcript variants which encode different protein isoforms have been described.[provided by RefSeq, Nov 2009],FHL-1, FHL1A, FHL1B, FLH1A, KYOT, RBMX1A, RBMX1B, SLIM, SLIM-1, SLIM1, SLIMMER, XMPMA,Cardiovascular,Epigenetics & Nuclear Signaling,Heart,Heart_Hypertrophy,FHL1

Molecular Weight: 30 kDa

Gene ID: 2273

UniProt: [Q13642](#)

Application Details

Application Notes: WB,1:500 - 1:2000,IHC,1:50 - 1:200

Restrictions: For Research Use only

Handling

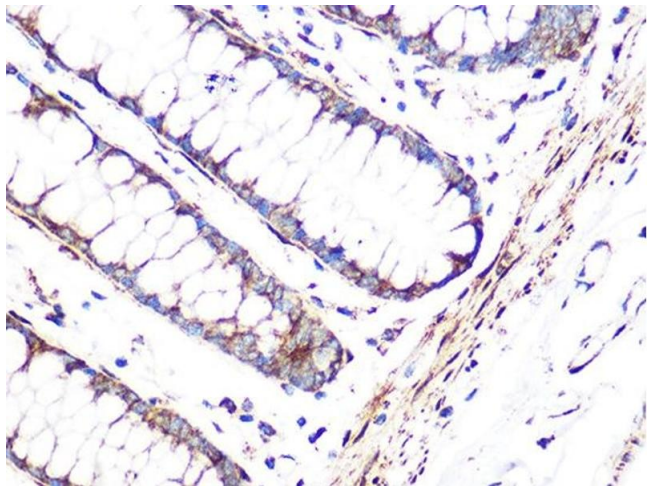
Buffer: PBS with 0.02 % sodium azide,0.05 % BSA,50 % glycerol, pH 7.3.

Preservative: Sodium azide

Precaution of Use: This product contains Sodium azide: a POISONOUS AND HAZARDOUS SUBSTANCE which should be handled by trained staff only.

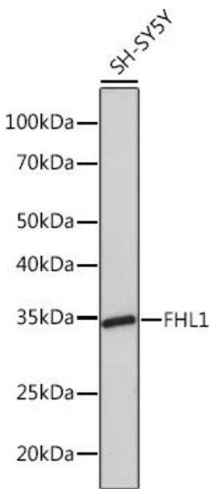
Storage: -20 °C

Storage Comment: Store at -20°C. Avoid freeze / thaw cycles.



Immunohistochemistry

Image 1. Immunohistochemistry of paraffin-embedded human colon using FHL1 Rabbit mAb (ABIN1680536, ABIN3019332, ABIN3019333 and ABIN7101753) at dilution of 1:100 (40x lens). Perform microwave antigen retrieval with 10 mM Tris/EDTA buffer pH 9.0 before commencing with IHC staining protocol.



Western Blotting

Image 2. Western blot analysis of extracts of SH-SY5Y cells, using FHL1 Rabbit mAb (ABIN1680536, ABIN3019332, ABIN3019333 and ABIN7101753) at 1:1000 dilution. Secondary antibody: HRP Goat Anti-Rabbit IgG (H+L) (ABIN1684268 and ABIN3020597) at 1:10000 dilution. Lysates/proteins: 25 µg per lane. Blocking buffer: 3 % nonfat dry milk in TBST. Detection: ECL Basic Kit (RM00020). Exposure time: 90s.