

Datasheet for ABIN1680591
anti-KIFAP3 antibody (AA 1-200)[Go to Product page](#)

6 Images

Overview

Quantity:	100 µg
Target:	KIFAP3
Binding Specificity:	AA 1-200
Reactivity:	Human
Host:	Rabbit
Clonality:	Polyclonal
Conjugate:	This KIFAP3 antibody is un-conjugated
Application:	Western Blotting (WB), Immunoprecipitation (IP), Immunofluorescence (IF)

Product Details

Immunogen:	Recombinant fusion protein containing a sequence corresponding to amino acids 1-200 of human KIFAP3 (NP_055785.2).
Sequence:	MQGEDARYLK RKVKGGNIDV HPSEKALIVH YEVEATILGE MGDPM LGERK ECQKIIRLKS LNANTDITSL ARKVVEECKL IHPSKLNEVE QLLYYLQNRRL DSLSGKEKKE KSSKPKDPPP FEGMEIDEVA NINDMDEYIE LLYEDIPDKV RGSALILQLA RNP DNLEELL LNETALGALA RVLREDWKQS VELATNIIYI
Isotype:	IgG
Cross-Reactivity:	Human, Mouse, Rat
Characteristics:	Polyclonal Antibodies

Target Details

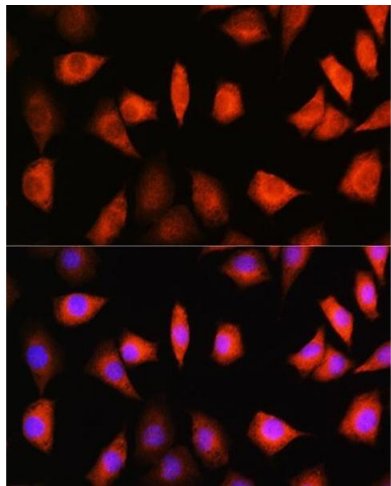
Target:	KIFAP3
Alternative Name:	KIFAP3 (KIFAP3 Products)
Background:	<p>The small G protein GDP dissociation stimulator (smg GDS) is a regulator protein having two activities on a group of small G proteins including the Rho and Rap1 family members and Ki-Ras, one is to stimulate their GDP/GTP exchange reactions, and the other is to inhibit their interactions with membranes. The protein encoded by this gene contains 9 'Armadillo' repeats and interacts with the smg GDS protein through these repeats. This protein, which is highly concentrated around the endoplasmic reticulum, is phosphorylated by v-src, and this phosphorylation reduces the affinity of the protein for smg GDS. It is thought that this protein serves as a linker between human chromosome-associated polypeptide (HCAP) and KIF3A/B, a kinesin superfamily protein in the nucleus, and that it plays a role in the interaction of chromosomes with an ATPase motor protein. Several transcript variants encoding different isoforms have been found for this gene.,KIFAP3,FLA3,KAP-1,KAP-3,KAP3,SMAP,Smg-GDS,dJ190116.1,Epigenetics & Nuclear Signaling,KIFAP3</p>
Molecular Weight:	82 kDa/86 kDa/91 kDa
Gene ID:	22920
UniProt:	Q92845
Pathways:	Hedgehog Signaling , Sensory Perception of Sound

Application Details

Application Notes:	WB,1:500 - 1:2000,IF,1:50 - 1:200,IP,1:50 - 1:100
Restrictions:	For Research Use only

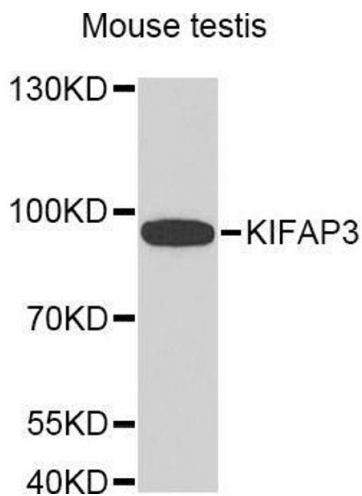
Handling

Buffer:	PBS with 0.02 % sodium azide,50 % glycerol, pH 7.3.
Preservative:	Sodium azide
Precaution of Use:	This product contains Sodium azide: a POISONOUS AND HAZARDOUS SUBSTANCE which should be handled by trained staff only.
Storage:	-20 °C
Storage Comment:	Store at -20°C. Avoid freeze / thaw cycles.



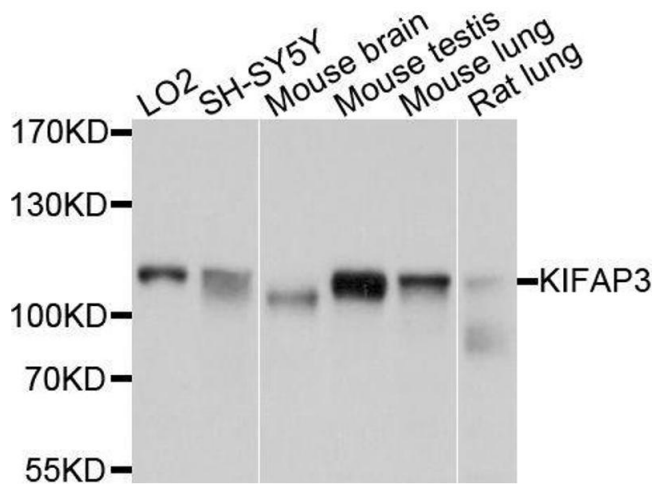
Immunofluorescence

Image 1. Immunofluorescence analysis of L929 cells using KIF Rabbit pAb (ABIN1680591, ABIN3019005, ABIN3019006 and ABIN6220670) at dilution of 1:100. Blue: DAPI for nuclear staining.



Western Blotting

Image 2.



Western Blotting

Image 3. Western blot analysis of extracts of various cell lines, using KIFAP3 antibody.

Please check the [product details page](#) for more images. Overall 6 images are available for ABIN1680591.