



[Go to Product page](#)

Datasheet for ABIN1680592

anti-KIFC1 antibody (AA 1-250)

6 Images

1 Publication

Overview

Quantity:	100 µg
Target:	KIFC1
Binding Specificity:	AA 1-250
Reactivity:	Human
Host:	Rabbit
Clonality:	Polyclonal
Conjugate:	This KIFC1 antibody is un-conjugated
Application:	Western Blotting (WB), Immunofluorescence (IF), Immunohistochemistry (IHC)

Product Details

Immunogen:	Recombinant fusion protein containing a sequence corresponding to amino acids 1-250 of human KIFC1 (NP_002254.2).
Sequence:	MDPQRSPLLE VKGNIELKRP LIKAPSQLPL SGSRLKRRPD QMEDGLEPEK KRTRGLGATT KITTSHPRVP SLTTPVQTQG QTTAQKVSCK TGPRCSTAIA TGLKNQKPVP AVPVQKSGTS GVPPMAGGKK PSKRPADWLK GQLCDLNAEL KRCRERTQTL DQENQQLQDQ LRDAQQVKA LGTERTTLEG HLAKVQAQAE QGQQLKNLR ACVLELEERL STQEGLVQEL QKKQVELQEE RRGLMSQLEE
Isotype:	IgG
Cross-Reactivity:	Human, Mouse, Rat
Characteristics:	Polyclonal Antibodies

Target Details

Target:	KIFC1
Alternative Name:	KIFC1 (KIFC1 Products)
Background:	Minus end-directed microtubule-dependent motor required for bipolar spindle formation. May contribute to movement of early endocytic vesicles (By similarity. Regulates cilium formation and structure (By similarity.,KIFC1,HSET,KNSL2,Signal Transduction,Cell Biology & Developmental Biology,Cell Cycle,Cytoskeleton,Motor Proteins,KIFC1
Molecular Weight:	73 kDa
Gene ID:	3833
UniProt:	Q9BW19

Application Details

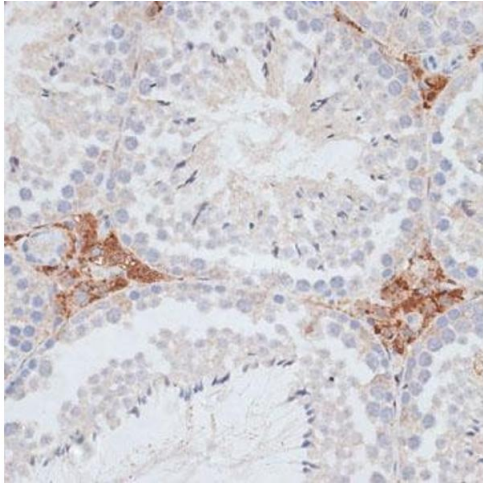
Application Notes:	WB,1:500 - 1:2000,IHC,1:50 - 1:100,IF,1:50 - 1:100
Restrictions:	For Research Use only

Handling

Buffer:	PBS with 0.02 % sodium azide,50 % glycerol, pH 7.3.
Preservative:	Sodium azide
Precaution of Use:	This product contains Sodium azide: a POISONOUS AND HAZARDOUS SUBSTANCE which should be handled by trained staff only.
Storage:	-20 °C
Storage Comment:	Store at -20°C. Avoid freeze / thaw cycles.

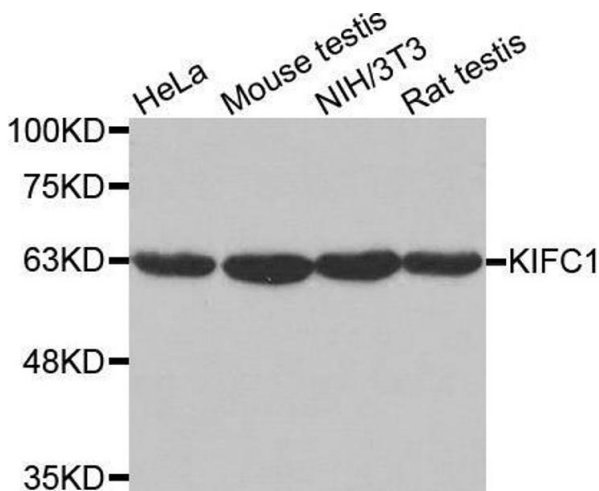
Publications

Product cited in:	Wang, Lin, Chen, Zhu, Jiang, Li, Wang et al.: "Overexpression of mitochondrial Hsp75 protects neural stem cells against microglia-derived soluble factor-induced neurotoxicity by regulating mitochondrial permeability transition pore opening in ..." in: International journal of molecular medicine , Vol. 36, Issue 6, pp. 1487-96, (2016) (PubMed).
-------------------	--



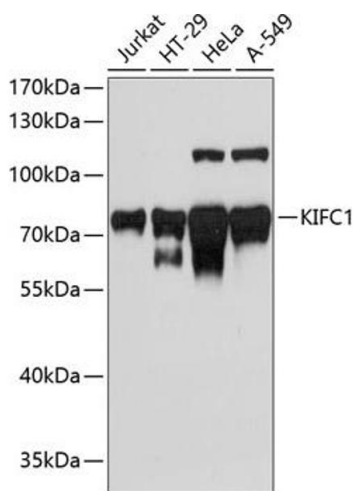
Immunohistochemistry

Image 1. Immunohistochemistry of paraffin-embedded mouse testis using KIFC1 antibody (ABIN1680592, ABIN3017666, ABIN3017667 and ABIN6220203) at dilution of 1:100 (40x lens). Perform microwave antigen retrieval with 10 mM PBS buffer pH 7.2 before commencing with IHC staining protocol.



Western Blotting

Image 2. Western blot analysis of extracts of various cell lines, using KIFC1 antibody.



Western Blotting

Image 3. Western blot analysis of extracts of various cell lines, using KIFC1 antibody (ABIN1680592, ABIN3017666, ABIN3017667 and ABIN6220203) at 1:3000 dilution. Secondary antibody: HRP Goat Anti-Rabbit IgG (H+L) (ABIN1684268 and ABIN3020597) at 1:10000 dilution. Lysates/proteins: 25 µg per lane. Blocking buffer: 3 % nonfat dry milk in TBST. Detection: ECL Basic Kit (RM00020). Exposure time: 90s.

Please check the [product details page](#) for more images. Overall 6 images are available for ABIN1680592.