

Datasheet for ABIN1680621  
**anti-KRR1 antibody (AA 1-381)**

5 Images



[Go to Product page](#)

## Overview

Quantity:	100 µg
Target:	KRR1
Binding Specificity:	AA 1-381
Reactivity:	Human
Host:	Rabbit
Clonality:	Polyclonal
Conjugate:	This KRR1 antibody is un-conjugated
Application:	Western Blotting (WB), Immunofluorescence (IF)

## Product Details

Immunogen:	Recombinant fusion protein containing a sequence corresponding to amino acids 1-381 of human KRR1 (NP_008974.5).
Sequence:	MASPSLERPE KGAGKSEFRN QKPKPENQDE SELLTVPDGW KEPAFSKEDN PRGLLEESSF ATLFPKYREA YLKECWPLVQ KALNEHHVNA TLDLIEGSMT VCTTKTFDTP YIIIRARDLI KLLARSVSFE QAVRILQDDV ACDIKIGSL VRNKERFVKR RQRLIGPKGS TLKALELLTN CYIMVQGNTV SAIGPFSGLK EVRKVLDTM KNIHPIYNIK SLMIKRELAK DSELRSQSWE RFLPQFKHKN VNKRKEPKKK TVKKEYTPFP PPQPESQIDK ELASGEYFLK ANQKKRQKME AIKAKQAEAI SKRQEERKA FIPPKEKPIV KPKEASTETK IDVASIKEKV KKAKNKKLGA LTAEELAKM EADEKKKKKK K
Isotype:	IgG
Cross-Reactivity:	Human, Mouse, Rat

## Product Details

---

Characteristics: Polyclonal Antibodies

## Target Details

---

Target: KRR1

Alternative Name: KRR1 ([KRR1 Products](#))

Background: Required for 40S ribosome biogenesis. Involved in nucleolar processing of pre-18S ribosomal RNA and ribosome assembly (By similarity.,KRR1,HRB2,RIP-1,Epigenetics & Nuclear Signaling,RNA Binding,Immunology & Inflammation,KRR1

Molecular Weight: 36 kDa/43 kDa

Gene ID: 11103

UniProt: [Q13601](#)

## Application Details

---

Application Notes: WB,1:500 - 1:2000,IF,1:50 - 1:200

Restrictions: For Research Use only

## Handling

---

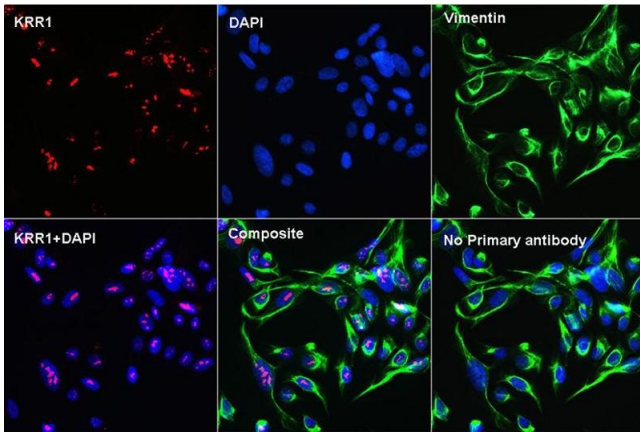
Buffer: PBS with 0.02 % sodium azide,50 % glycerol, pH 7.3.

Preservative: Sodium azide

Precaution of Use: This product contains Sodium azide: a POISONOUS AND HAZARDOUS SUBSTANCE which should be handled by trained staff only.

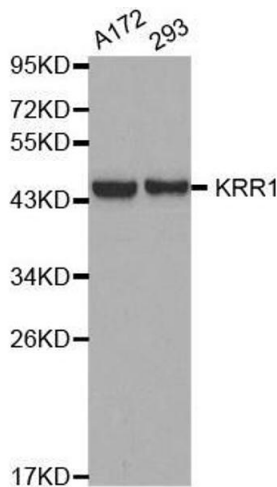
Storage: -20 °C

Storage Comment: Store at -20°C. Avoid freeze / thaw cycles.



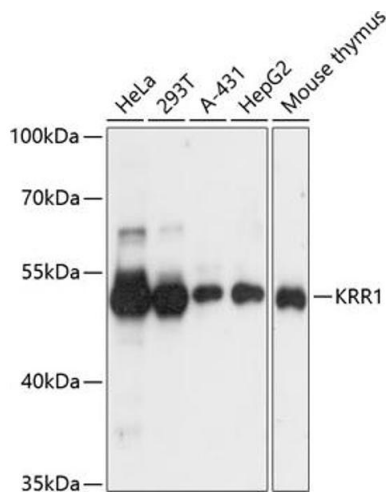
### Immunofluorescence

**Image 1.** Confocal Immunofluorescent analysis of U2OS cells using KRR1 Rabbit pAb at dilution of 1:100 (40x lens)(red). Vimentin (ABIN7271326: Vimentin Rabbit mAb) for Cytoskeleton staining(green), DAPI for nuclear staining(blue).



### Western Blotting

**Image 2.** Western blot analysis of extracts of various cell lines, using KRR1 antibody.



### Western Blotting

**Image 3.** Western blot analysis of extracts of various cell lines, using KRR1 antibody at 1:3000 dilution. Secondary antibody: HRP Goat Anti-Rabbit IgG (H+L) (ABIN1684268 and ABIN3020597) at 1:10000 dilution. Lysates/proteins: 25 µg per lane. Blocking buffer: 3% nonfat dry milk in TBST. Detection: ECL Basic Kit (RM00020). Exposure time: 1s.

Please check the [product details page](#) for more images. Overall 5 images are available for ABIN1680621.