



Datasheet for ABIN1680688
anti-SNCG antibody



[Go to Product page](#)

2 Images

Overview

Quantity:	20 µL
Target:	SNCG
Reactivity:	Human
Host:	Rabbit
Clonality:	Monoclonal
Conjugate:	This SNCG antibody is un-conjugated
Application:	Western Blotting (WB), Immunohistochemistry (IHC)

Product Details

Immunogen:	A synthesized peptide derived from human gamma-Synuclein
Isotype:	IgG
Cross-Reactivity:	Human, Mouse, Rat
Characteristics:	Monoclonal Antibodies
Purification:	Affinity purification

Target Details

Target:	SNCG
Alternative Name:	SNCG (SNCG Products)
Background:	This gene encodes a member of the synuclein family of proteins which are believed to be involved in the pathogenesis of neurodegenerative diseases. Mutations in this gene have also

Target Details

been associated with breast tumor development. [provided by RefSeq, Jan 2010],BCSG1, SR,Neurodegenerative Diseases,Neurodegenerative Diseases_Amyloid Plaque and Neurofibrillary Tangle Formation in Alzheimers Disease,Neurodegenerative Diseases_Dopamine Signaling in Parkinsons Disease,Neuroscience,SNCG

Molecular Weight: 16 kDa

Gene ID: 6623

UniProt: [O76070](#)

Application Details

Application Notes: WB,1:500 - 1:2000, IHC,1:50 - 1:200

Restrictions: For Research Use only

Handling

Buffer: PBS with 0.02 % sodium azide,0.05 % BSA,50 % glycerol, pH 7.3.

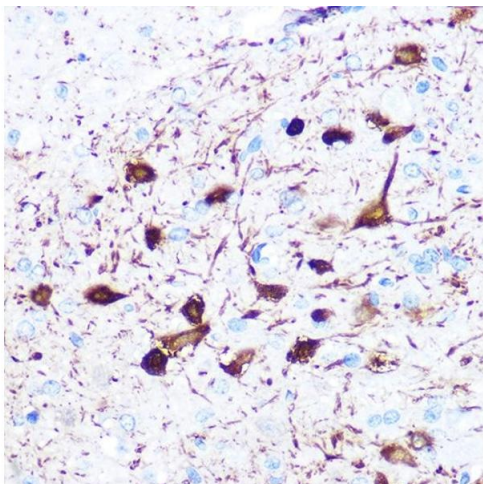
Preservative: Sodium azide

Precaution of Use: This product contains Sodium azide: a POISONOUS AND HAZARDOUS SUBSTANCE which should be handled by trained staff only.

Storage: -20 °C

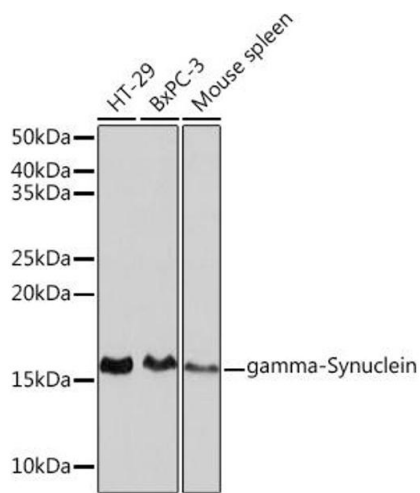
Storage Comment: Store at -20°C. Avoid freeze / thaw cycles.

Images



Immunohistochemistry

Image 1. Immunohistochemistry of paraffin-embedded rat brain using gamma-Synuclein Rabbit mAb (ABIN3016563, ABIN3016564, ABIN1680688 and ABIN1680689) at dilution of 1:100 (40x lens). Perform microwave antigen retrieval with 10 mM PBS buffer pH 7.2 before commencing with IHC staining protocol.



Western Blotting

Image 2. Western blot analysis of extracts of various cell lines, using gamma-Synuclein Rabbit mAb (ABIN3016563, ABIN3016564, ABIN1680688 and ABIN1680689) at 1:1000 dilution. Secondary antibody: HRP Goat Anti-Rabbit IgG (H+L) (ABIN1684268 and ABIN3020597) at 1:10000 dilution. Lysates/proteins: 25 µg per lane. Blocking buffer: 3 % nonfat dry milk in TBST. Detection: ECL Basic Kit (RM00020). Exposure time: 3 min.