



[Go to Product page](#)

Datasheet for ABIN1680779
anti-MATN4 antibody (AA 221-540)

1 Image

Overview

| | |
|----------------------|---|
| Quantity: | 100 µg |
| Target: | MATN4 |
| Binding Specificity: | AA 221-540 |
| Reactivity: | Human |
| Host: | Rabbit |
| Clonality: | Polyclonal |
| Conjugate: | This MATN4 antibody is un-conjugated |
| Application: | Western Blotting (WB), Immunohistochemistry (IHC) |

Product Details

| | |
|-------------------|---|
| Immunogen: | Recombinant fusion protein containing a sequence corresponding to amino acids 221-540 of human MATN4 (NP_085080.1). |
| Sequence: | FGNHSCQHEC VSTPGGPRCH CREGHDLQPD GRSCQVRDLC NGVDHGCEFQ CVSEGLSYRC LCPEGRQLQA DGKSCNRCRE GHVDLVLLVD GSKSVRPQNF ELVKRFVNQI VDFLDVSPEG TRVGLVQFSS RVRTEFPLGR YGTAAEVKQA VLAVEYMERG TMTGLALRHM VEHSFSEAQG ARPRALNVPR VGLVFTDGRS QDDISVWAAR AKEEGIVMYA VGVGKAVEAE LREIASEPAE LHVSYPDFG TMTHLLENLR GSICPEEGIS AGTELRSPCE CESLVEFQGR TLGALESRTL NLAQLTARLE DLENQLANQK |
| Isotype: | IgG |
| Cross-Reactivity: | Human, Mouse, Rat |
| Characteristics: | Polyclonal Antibodies |

Target Details

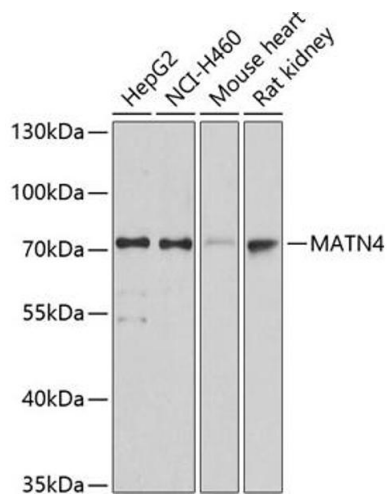
| | |
|-------------------|---|
| Target: | MATN4 |
| Alternative Name: | MATN4 (MATN4 Products) |
| Background: | <p>This gene encodes a member of von Willebrand factor A domain-containing protein family. The proteins of this family are thought to be involved in the formation of filamentous networks in the extracellular matrices of various tissues. This family member is thought to play a role in reorganizing and regenerating the corneal matrix in granular and lattice type I dystrophies. It may also be involved in wound healing in the dentin-pulp complex. Alternative splicing results in multiple transcript variants.,MATN4,Signal Transduction,Cell Biology & Developmental Biology,Cytoskeleton,Extracellular Matrix,MATN4</p> |
| Molecular Weight: | 47 kDa/59 kDa/64 kDa/68 kDa |
| Gene ID: | 8785 |
| UniProt: | O95460 |

Application Details

| | |
|--------------------|-------------------------------------|
| Application Notes: | WB,1:500 - 1:2000,IHC,1:100 - 1:200 |
| Restrictions: | For Research Use only |

Handling

| | |
|--------------------|--|
| Buffer: | PBS with 0.02 % sodium azide,50 % glycerol, pH 7.3. |
| Preservative: | Sodium azide |
| Precaution of Use: | This product contains Sodium azide: a POISONOUS AND HAZARDOUS SUBSTANCE which should be handled by trained staff only. |
| Storage: | -20 °C |
| Storage Comment: | Store at -20°C. Avoid freeze / thaw cycles. |



Western Blotting

Image 1. Western blot analysis of extracts of various cell lines, using M antibody (ABIN3016623, ABIN3016624, ABIN1680779 and ABIN6219802) at 1:3000 dilution. Secondary antibody: HRP Goat Anti-Rabbit IgG (H+L) (ABIN1684268 and ABIN3020597) at 1:10000 dilution. Lysates/proteins: 25 µg per lane. Blocking buffer: 3% nonfat dry milk in TBST. Detection: ECL Basic Kit (RM00020). Exposure time: 10s.