

Datasheet for ABIN1680937  
**anti-MXD1 antibody (AA 1-221)**



[Go to Product page](#)

1 Image

## Overview

Quantity:	100 µg
Target:	MXD1
Binding Specificity:	AA 1-221
Reactivity:	Human
Host:	Rabbit
Clonality:	Polyclonal
Conjugate:	This MXD1 antibody is un-conjugated
Application:	Western Blotting (WB)

## Product Details

Immunogen:	Recombinant fusion protein containing a sequence corresponding to amino acids 1-221 of human MXD1 (NP_002348.1).
Sequence:	MAAAVRMNIQ MLLEAADYLE RREREAHEGY ASMLPYNNKD RDALKRRNKS KKNSSSRST HNEMEKNRRA HLRLCLEKLG VPLGPSS RHTTLLSLLTK AKLHIKKLED CDRKAVHQID QLQREQRHLK RQLEKLGIER IRMDSIGSTV SSERSDSDRE EIDVDVESTD YLTGDLDWSS SSVSDSDERG SMQSLGSDEG YSSTSIIKRIK LQDSHKACLG L
Isotype:	IgG
Cross-Reactivity:	Human
Characteristics:	Polyclonal Antibodies

## Target Details

---

Target:	MXD1
Alternative Name:	MXD1 ( <a href="#">MXD1 Products</a> )
Background:	<p>This gene encodes a member of the MYC/MAX/MAD network of basic helix-loop-helix leucine zipper transcription factors. The MYC/MAX/MAD transcription factors mediate cellular proliferation, differentiation and apoptosis. The encoded protein antagonizes MYC-mediated transcriptional activation of target genes by competing for the binding partner MAX and recruiting repressor complexes containing histone deacetylases. Mutations in this gene may play a role in acute leukemia, and the encoded protein is a potential tumor suppressor. Alternatively spliced transcript variants encoding multiple isoforms have been observed for this gene.,MXD1,BHLHC58,MAD,MAD1,Epigenetics &amp; Nuclear Signaling,Transcription Factors,Signal Transduction,MAPK-Erk Signaling Pathway,MXD1</p>
Molecular Weight:	24 kDa/25 kDa
Gene ID:	4084
UniProt:	<a href="#">Q05195</a>

## Application Details

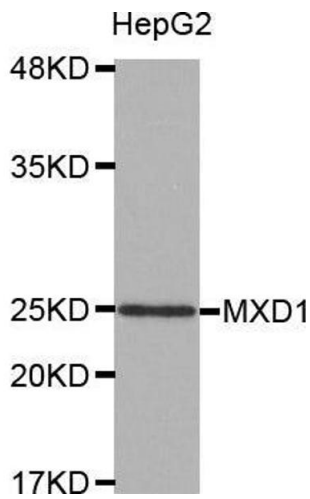
---

Application Notes:	WB,1:500 - 1:2000
Restrictions:	For Research Use only

## Handling

---

Buffer:	PBS with 0.02 % sodium azide,50 % glycerol, pH 7.3.
Preservative:	Sodium azide
Precaution of Use:	This product contains Sodium azide: a POISONOUS AND HAZARDOUS SUBSTANCE which should be handled by trained staff only.
Storage:	-20 °C
Storage Comment:	Store at -20°C. Avoid freeze / thaw cycles.



#### Western Blotting

**Image 1.** Western blot analysis of extracts of HepG2 cell line, using MXD1 antibody.