



[Go to Product page](#)

Datasheet for ABIN1680938

anti-MYBBP1A antibody (AA 1104-1328)

5 Images

Overview

Quantity:	100 µg
Target:	MYBBP1A
Binding Specificity:	AA 1104-1328
Reactivity:	Human
Host:	Rabbit
Clonality:	Polyclonal
Application:	Western Blotting (WB), Immunohistochemistry (IHC), Immunofluorescence (IF)

Product Details

Immunogen:	Recombinant fusion protein containing a sequence corresponding to amino acids 1104-1328 of human MYBBP1A (NP_055335.2).
Sequence:	DLTVLLGVLQ GQQQSLQQGA HSTGSSRLHD LYWQAMKTLG VQRPKLEKGD AKEIPSATQS PISKRRKKKG FLPETKKRKK RKSEGDGTPAE DGTPAATGGS QPPSMGRKKR NRTKAKVPAQ ANGTPTTKSP APGAPTRSPS TPAKSPKLQK KNQKPSQVNG APGSPTEPAG QKQHQKALPK KGVLGKSPLS ALARKKARLS LVIRSPSLQ SGAKKKAQVR KAGKP
Isotype:	IgG
Cross-Reactivity:	Human, Mouse, Rat
Characteristics:	Polyclonal Antibodies

Target Details

Target:	MYBBP1A
---------	---------

Target Details

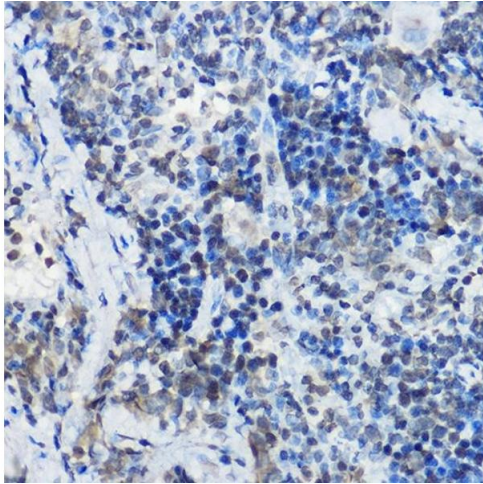
Alternative Name:	MYBBP1A (MYBBP1A Products)
Background:	This gene encodes a nucleolar transcriptional regulator that was first identified by its ability to bind specifically to the Myb proto-oncogene protein. The encoded protein is thought to play a role in many cellular processes including response to nucleolar stress, tumor suppression and synthesis of ribosomal DNA. Alternate splicing results in multiple transcript variants.,MYBBP1A,P160,PAP2,Pol5,Epigenetics & Nuclear Signaling,RNA Binding,Cancer,Signal Transduction,MYBBP1A
Molecular Weight:	148 kDa/149 kDa
Gene ID:	10514
UniProt:	Q9BQG0

Application Details

Application Notes:	WB,1:500 - 1:2000,IHC,1:50 - 1:200,IF,1:50 - 1:200
Restrictions:	For Research Use only

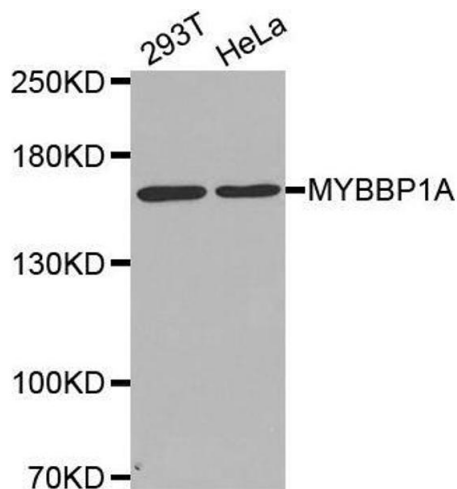
Handling

Buffer:	PBS with 0.02 % sodium azide,50 % glycerol, pH 7.3.
Preservative:	Sodium azide
Precaution of Use:	This product contains Sodium azide: a POISONOUS AND HAZARDOUS SUBSTANCE which should be handled by trained staff only.
Storage:	-20 °C
Storage Comment:	Store at -20°C. Avoid freeze / thaw cycles.



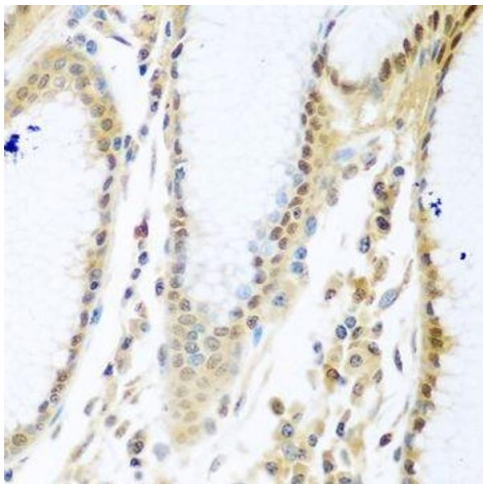
Immunohistochemistry

Image 1. Immunohistochemistry of paraffin-embedded rat spleen using MYBBP1A Rabbit pAb (ABIN1680938, ABIN3018915, ABIN3018916 and ABIN6220628) at dilution of 1:100 (40x lens). Perform high pressure antigen retrieval with 10 mM citrate buffer pH 6.0 before commencing with IHC staining protocol.



Western Blotting

Image 2. Western blot analysis of extracts of various cell lines, using MYBBP1A antibody.



Immunohistochemistry (Paraffin-embedded Sections)

Image 3. Immunohistochemistry of paraffin-embedded human stomach using MYBBP1A antibody.

Please check the [product details page](#) for more images. Overall 5 images are available for ABIN1680938.