

Datasheet for ABIN1680974

anti-NBR1 antibody

5 Images

[Go to Product page](#)

Overview

Quantity:	100 µg
Target:	NBR1
Reactivity:	Human
Host:	Rabbit
Clonality:	Polyclonal
Application:	Western Blotting (WB), Immunohistochemistry (IHC), Immunofluorescence (IF), Immunoprecipitation (IP)

Product Details

Immunogen:	Recombinant protein of human NBR1
Isotype:	IgG
Cross-Reactivity:	Human, Monkey, Mouse, Rat
Characteristics:	Polyclonal Antibodies

Target Details

Target:	NBR1
Alternative Name:	NBR1 (NBR1 Products)
Background:	The protein encoded by this gene was originally identified as an ovarian tumor antigen monitored in ovarian cancer. The encoded protein contains a B-box/coiled-coil motif, which is present in many genes with transformation potential. It functions as a specific autophagy receptor for the selective autophagic degradation of peroxisomes by forming intracellular

Target Details

inclusions with ubiquitylated autophagic substrates. This gene is located on a region of chromosome 17q21.1 that is in close proximity to the BRCA1 tumor suppressor gene.

Alternative splicing of this gene results in multiple transcript variants.,NBR1,1A1-3B,IAI3B,M17S2,MIG19,Cell Biology & Developmental Biology,Autophagy,Endocrine & Metabolism,Mitochondrial metabolism,Mitochondrial Control of Autophagy,NBR1

Molecular Weight: 103 kDa/107 kDa

Gene ID: 4077

UniProt: [Q14596](#)

Pathways: [Autophagy](#)

Application Details

Application Notes: WB,1:500 - 1:2000,IHC,1:50 - 1:200,IF,1:50 - 1:100,IP,1:20 - 1:50

Restrictions: For Research Use only

Handling

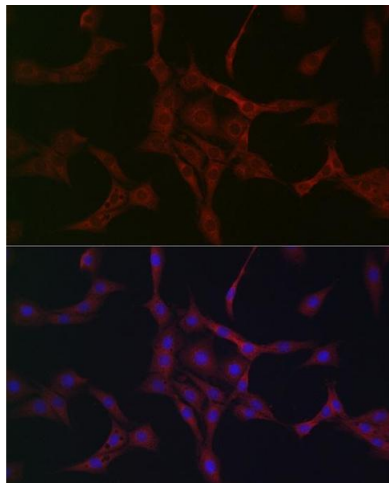
Buffer: PBS with 0.02 % sodium azide,50 % glycerol, pH 7.3.

Preservative: Sodium azide

Precaution of Use: This product contains Sodium azide: a POISONOUS AND HAZARDOUS SUBSTANCE which should be handled by trained staff only.

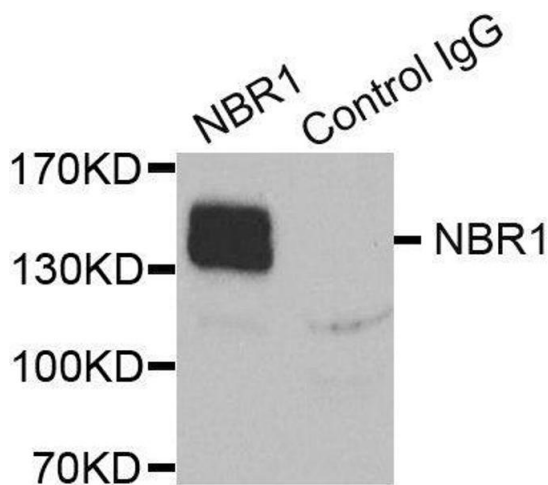
Storage: -20 °C

Storage Comment: Store at -20°C. Avoid freeze / thaw cycles.



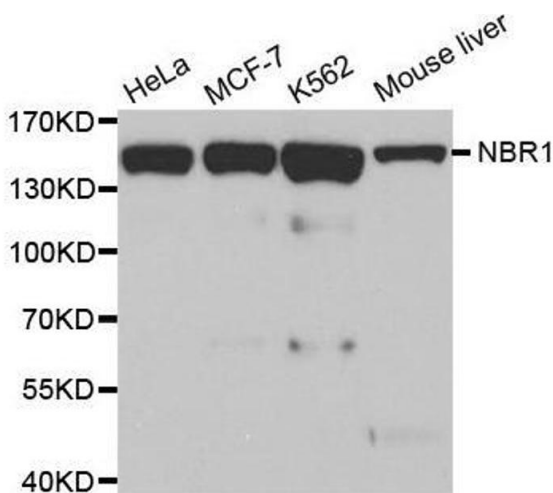
Immunofluorescence

Image 1. Immunofluorescence analysis of PC-12 cells using NBR1 Rabbit pAb (ABIN1680974, ABIN3018329 and ABIN3018330) at dilution of 1:50 (40x lens). Blue: DAPI for nuclear staining.



Immunoprecipitation

Image 2.



Western Blotting

Image 3. Western blot analysis of extracts of various cell lines, using NBR1 antibody.

Please check the [product details page](#) for more images. Overall 5 images are available for ABIN1680974.