



[Go to Product page](#)

Datasheet for ABIN1681086
anti-NPLOC4 antibody (AA 1-270)

4 Images

Overview

Quantity:	100 µg
Target:	NPLOC4
Binding Specificity:	AA 1-270
Reactivity:	Human
Host:	Rabbit
Clonality:	Polyclonal
Conjugate:	This NPLOC4 antibody is un-conjugated
Application:	Western Blotting (WB), Immunofluorescence (IF)

Product Details

Immunogen:	Recombinant fusion protein containing a sequence corresponding to amino acids 1-270 of human NPLOC4 (NP_060391.2).
Sequence:	MAESIIIRVQ SPDGVK RITA TKRETAATFL KKVAK EFGFQ NNGFSVYINR NKTGEITASS NKSLNLLKIK HGDLLFLFPS SLAGPSSEME TSVPPGFKVF GAPNVVEDEI DQYLSKQDGK IYRSRDPQLC RHGPLGKCVH CVPLEPFDED YLNHLEPPVK HMSFHAYIRK LTGGADKGGK VALENISCKI KSGCEGHL PW PNGICTKCQP SAITLNRQKY RHVDNIMFEN HTVADRFLDF WRKTGNQHFG YLYGRYTEHK DIPLGIRAEV
Isotype:	IgG
Cross-Reactivity:	Human, Mouse, Rat
Characteristics:	Polyclonal Antibodies

Target Details

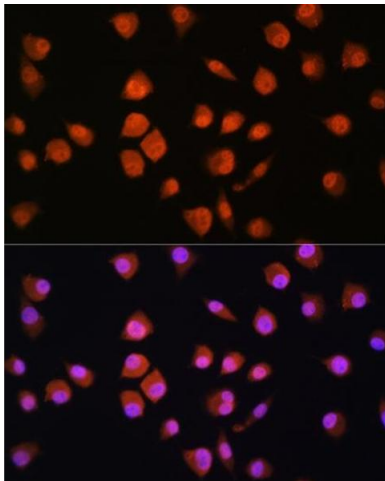
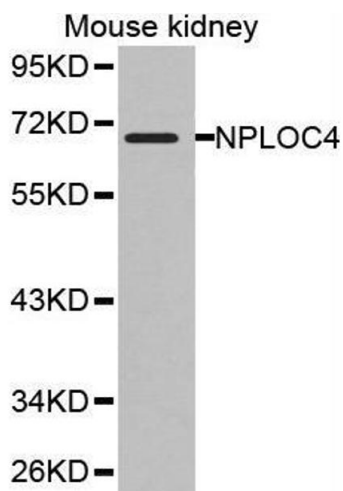
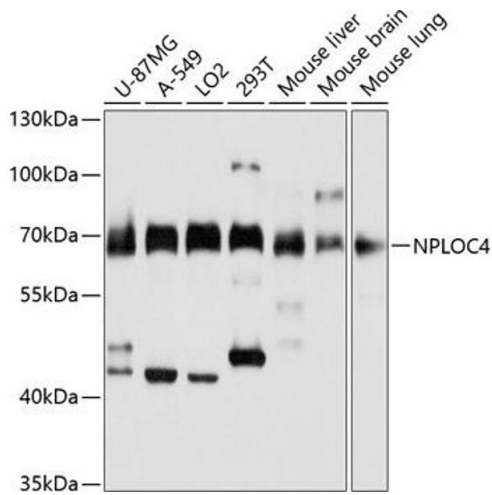
Target:	NPLOC4
Alternative Name:	NPLOC4 (NPLOC4 Products)
Background:	The ternary complex containing UFD1, VCP and NPLOC4 binds ubiquitinated proteins and is necessary for the export of misfolded proteins from the ER to the cytoplasm, where they are degraded by the proteasome. The NPLOC4-UFD1-VCP complex regulates spindle disassembly at the end of mitosis and is necessary for the formation of a closed nuclear envelope (By similarity). Acts as a negative regulator of type I interferon production via the complex formed with VCP and UFD1, which binds to DDX58/RIG-I and recruits RNF125 to promote ubiquitination and degradation of DDX58/RIG-I.,NPLOC4,NPL4,NPL4 homolog,Signal Transduction,NPLOC4
Molecular Weight:	68 kDa/69 kDa
Gene ID:	55666
UniProt:	Q8TAT6

Application Details

Application Notes:	WB,1:1000 - 1:2000,IF,1:50 - 1:200
Restrictions:	For Research Use only

Handling

Buffer:	PBS with 0.02 % sodium azide,50 % glycerol, pH 7.3.
Preservative:	Sodium azide
Precaution of Use:	This product contains Sodium azide: a POISONOUS AND HAZARDOUS SUBSTANCE which should be handled by trained staff only.
Storage:	-20 °C
Storage Comment:	Store at -20°C. Avoid freeze / thaw cycles.



Western Blotting

Image 1. Western blot analysis of extracts of various cell lines, using NPLOC4 antibody (ABIN1681086, ABIN5664262, ABIN5664264 and ABIN6220175) at 1:3000 dilution. Secondary antibody: HRP Goat Anti-Rabbit IgG (H+L) (ABIN1684268 and ABIN3020597) at 1:10000 dilution. Lysates/proteins: 25 µg per lane. Blocking buffer: 3 % nonfat dry milk in TBST. Detection: ECL Basic Kit (RM00020). Exposure time: 10s.

Western Blotting

Image 2.

Immunofluorescence

Image 3. Immunofluorescence analysis of L929 cells using NPLOC4 Rabbit pAb (ABIN1681086, ABIN5664262, ABIN5664264 and ABIN6220175) at dilution of 1:100. Blue: DAPI for nuclear staining.

Please check the [product details page](#) for more images. Overall 4 images are available for ABIN1681086.