

Datasheet for ABIN1681134
anti-NUDT21 antibody (AA 1-227)



[Go to Product page](#)

3 Images

Overview

Quantity:	100 µg
Target:	NUDT21
Binding Specificity:	AA 1-227
Reactivity:	Human
Host:	Rabbit
Clonality:	Polyclonal
Conjugate:	This NUDT21 antibody is un-conjugated
Application:	Western Blotting (WB), Immunohistochemistry (IHC)

Product Details

Immunogen:	Recombinant fusion protein containing a sequence corresponding to amino acids 1-227 of human NUDT21 (NP_008937.1).
Sequence:	MSVPPNRSQ TGWPRGVTQF GNKYIQQTKP LTLERTINLY PLTNYTFGTK EPLYEKDSSV AARFQRMREE FDKIGMRRTV EGV LIVHEHR LPHVLLLQLG TFFFKLPGGE LNPGEDEVEG LKRLMTEILG RQDGLQDWV IDDCIGNWWR PNFEPQYPY IPA HITKPK E HKKLFLVQLQ EKALFAVPKN YKLVAAPLFE LYDNAPGYGP IISLPQLLS RFNFIYN
Isotype:	IgG
Cross-Reactivity:	Human, Mouse, Rat
Characteristics:	Polyclonal Antibodies

Target Details

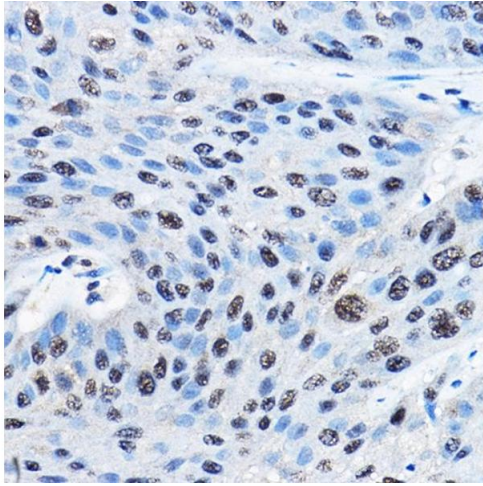
Target:	NUDT21
Alternative Name:	NUDT21 (NUDT21 Products)
Background:	The protein encoded by this gene is one subunit of a cleavage factor required for 3' RNA cleavage and polyadenylation processing. The interaction of the protein with the RNA is one of the earliest steps in the assembly of the 3' end processing complex and facilitates the recruitment of other processing factors. This gene encodes the 25kD subunit of the protein complex, which is composed of four polypeptides.,NUDT21,CFIM25,CPSF5,Epigenetics & Nuclear Signaling,RNA Binding,NUDT21
Molecular Weight:	26 kDa
Gene ID:	11051
UniProt:	O43809

Application Details

Application Notes:	WB,1:200 - 1:2000,IHC,1:50 - 1:200
Restrictions:	For Research Use only

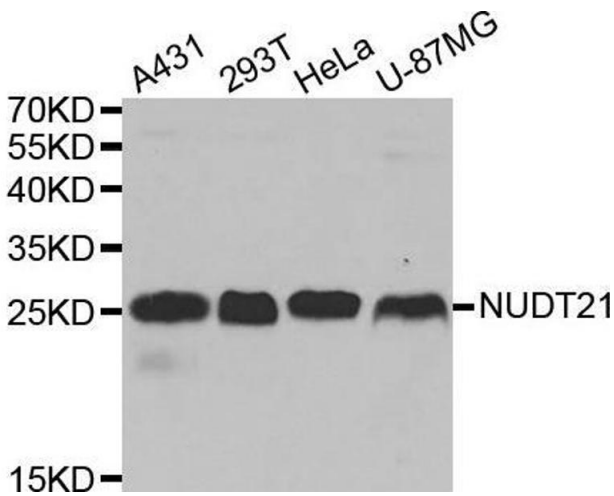
Handling

Buffer:	PBS with 0.02 % sodium azide,50 % glycerol, pH 7.3.
Preservative:	Sodium azide
Precaution of Use:	This product contains Sodium azide: a POISONOUS AND HAZARDOUS SUBSTANCE which should be handled by trained staff only.
Storage:	-20 °C
Storage Comment:	Store at -20°C. Avoid freeze / thaw cycles.



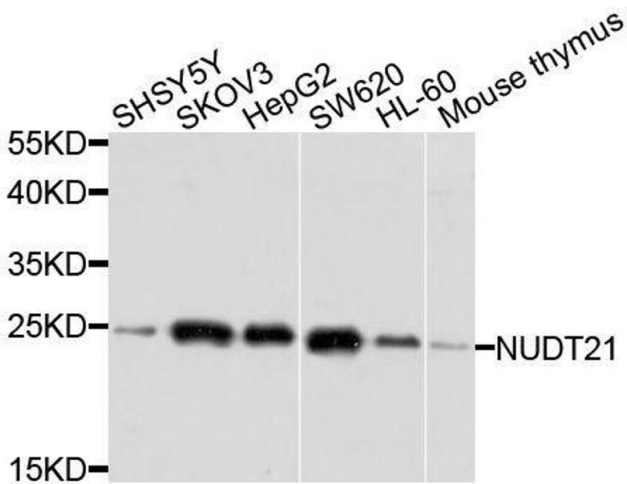
Immunohistochemistry

Image 1. Immunohistochemistry of paraffin-embedded human esophageal cancer using NUDT21 Rabbit pAb (ABIN1681134, ABIN3018973, ABIN3018974 and ABIN6220652) at dilution of 1:100 (40x lens). Perform high pressure antigen retrieval with 10 mM citrate buffer pH 6.0 before commencing with IHC staining protocol.



Western Blotting

Image 2. Western blot analysis of extracts of various cell lines, using NUDT21 antibody.



Western Blotting

Image 3. Western blot analysis of extracts of various cell lines, using NUDT21 antibody.