

Datasheet for ABIN1681320
anti-PEG10 antibody (AA 1-325)



[Go to Product page](#)

6 Images

Overview

Quantity:	100 µg
Target:	PEG10
Binding Specificity:	AA 1-325
Reactivity:	Human
Host:	Rabbit
Clonality:	Polyclonal
Conjugate:	This PEG10 antibody is un-conjugated
Application:	Western Blotting (WB), Immunohistochemistry (IHC)

Product Details

Immunogen:	Recombinant fusion protein containing a sequence corresponding to amino acids 1-325 of human PEG10 (NP_001035242.1).
Sequence:	MTERRRDELS EEINNLREKV MKQSEENNL QSQVQKLTEE NTTLREQVEP TPEDEDDIE LRGAAAAAAP PPPIEEECPE DLPEKFDGNP DMLAPFMAQC QIFMEKSTRD FSVDRVRVCF VTSMMTGRAA RWASAKLERS HYLMHNYPAF MMEMKHVFED PQRREVAKRK IRRLRQGMGS VIDYSNAFQM IAQDLWNEP ALIDQYHEGL SDHIQEELSH LEVAKSLSAL IGQCIHIERR LARAAAARKP RSPPRALVLP HIAHHQVDP TEPVGGARMR LTQEEKERRR KLNLCLYCGT GGHYADNCPA KASKSSPAGN SPAPL
Isotype:	IgG
Cross-Reactivity:	Human, Mouse, Rat
Characteristics:	Polyclonal Antibodies

Target Details

Target:	PEG10
Alternative Name:	PEG10 (PEG10 Products)
Background:	<p>This is a paternally expressed imprinted gene that is thought to have been derived from the Ty3/Gypsy family of retrotransposons. It contains two overlapping open reading frames, RF1 and RF2, and expresses two proteins: a shorter, gag-like protein (with a CCHC-type zinc finger domain) from RF1, and a longer, gag/pol-like fusion protein (with an additional aspartic protease motif) from RF1/RF2 by -1 translational frameshifting (-1 FS). While -1 FS has been observed in RNA viruses and transposons in both prokaryotes and eukaryotes, this gene represents the first example of -1 FS in a eukaryotic cellular gene. This gene is highly conserved across mammalian species and retains the heptanucleotide (GGGAAAC) and pseudoknot elements required for -1 FS. It is expressed in adult and embryonic tissues (most notably in placenta) and reported to have a role in cell proliferation, differentiation and apoptosis. Overexpression of this gene has been associated with several malignancies, such as hepatocellular carcinoma and B-cell lymphocytic leukemia. Knockout mice lacking this gene showed early embryonic lethality with placental defects, indicating the importance of this gene in embryonic development. Additional isoforms resulting from alternatively spliced transcript variants, and use of upstream non-AUG (CUG) start codon have been reported for this gene.,PEG10,EDR,HB-1,MEF3L,Mar2,Mart2,RGAG3,RTL2,SIRH1,Epigenetics & Nuclear Signaling,Transcription Factors,RNA Binding,Cancer,Stem Cells,Germline Stem Cells,PEG10</p>
Molecular Weight:	36 kDa/80 kDa
Gene ID:	23089
UniProt:	Q86TG7

Application Details

Application Notes:	WB,1:200 - 1:2000,IHC,1:50 - 1:200
Restrictions:	For Research Use only

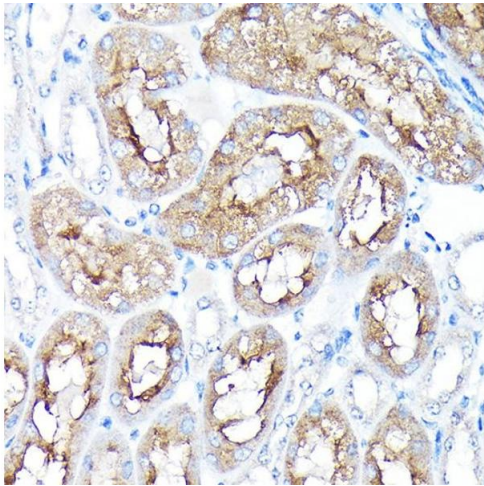
Handling

Buffer:	PBS with 0.02 % sodium azide,50 % glycerol, pH 7.3.
Preservative:	Sodium azide
Precaution of Use:	This product contains Sodium azide: a POISONOUS AND HAZARDOUS SUBSTANCE which should be handled by trained staff only.

Handling

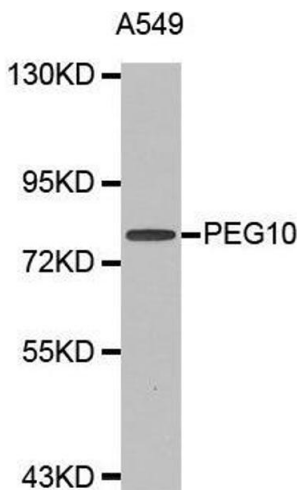
Storage:	-20 °C
Storage Comment:	Store at -20°C. Avoid freeze / thaw cycles.

Images



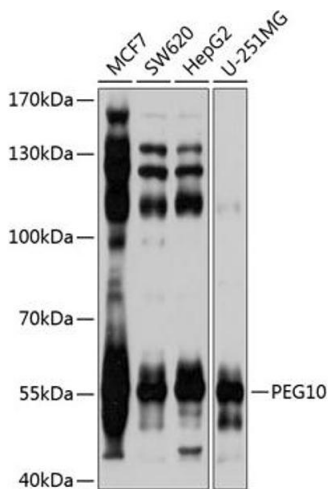
Immunohistochemistry

Image 1. Immunohistochemistry of paraffin-embedded mouse kidney using PEG10 Rabbit pAb (ABIN3016692, ABIN3016693, ABIN1681320 and ABIN6219814) at dilution of 1:100 (40x lens). Perform high pressure antigen retrieval with 10 mM citrate buffer pH 6.0 before commencing with IHC staining protocol.



Western Blotting

Image 2. Western blot analysis of extracts of A549 cell line, using PEG10 antibody.



Western Blotting

Image 3. Western blot analysis of extracts of various cell lines, using PEG10 antibody (ABIN3016692, ABIN3016693, ABIN1681320 and ABIN6219814) at 1:1000 dilution. Secondary antibody: HRP Goat Anti-Rabbit IgG (H+L) (ABIN1684268 and ABIN3020597) at 1:10000 dilution. Lysates/proteins: 25 µg per lane. Blocking buffer: 3 % nonfat dry milk in TBST. Detection: ECL Basic Kit (RM00020). Exposure time: 1s.

Please check the [product details page](#) for more images. Overall 6 images are available for ABIN1681320.