

Datasheet for ABIN1682206
anti-Plastin 3 antibody (AA 1-240)



[Go to Product page](#)

2 Images

Overview

| | |
|----------------------|---|
| Quantity: | 100 µg |
| Target: | Plastin 3 (PLS3) |
| Binding Specificity: | AA 1-240 |
| Reactivity: | Human |
| Host: | Rabbit |
| Clonality: | Polyclonal |
| Conjugate: | This Plastin 3 antibody is un-conjugated |
| Application: | Western Blotting (WB), Immunoprecipitation (IP) |

Product Details

| | |
|-------------------|---|
| Immunogen: | Recombinant fusion protein containing a sequence corresponding to amino acids 1-240 of human PLS3 (NP_005023.2). |
| Sequence: | MDEMATTQIS KDELDELKEA FAKVDLNSNG FICDYELHEL FKEANMPLPG YKVDREIIQKL MLDGDRNKDG KISFDEFVYI FQEVKSSDIA KTFRKAINRK EGICALGGTS ELSSEGTQHS YSEEEKYAFV NWINKALEND PDCRHVIPMN PNTDDLKAV GDGIVLCKMI NLSVPDTIDE RAINKKKLTPIIQQENLNLA LNSASAIGCH VVNIQAEDLR AGKPHLVLGL LWQIIKIGLF |
| Isotype: | IgG |
| Cross-Reactivity: | Human, Mouse, Rat |
| Characteristics: | Polyclonal Antibodies |

Target Details

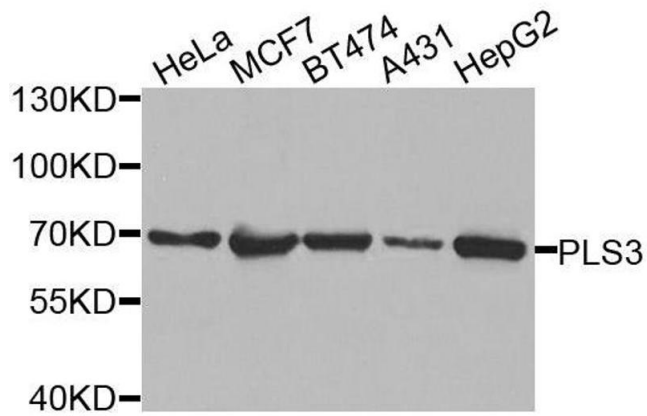
| | |
|-------------------|--|
| Target: | Plastin 3 (PLS3) |
| Alternative Name: | PLS3 (PLS3 Products) |
| Background: | <p>Plastins are a family of actin-binding proteins that are conserved throughout eukaryote evolution and expressed in most tissues of higher eukaryotes. In humans, two ubiquitous plastin isoforms (L and T) have been identified. Plastin 1 (otherwise known as Fimbrin) is a third distinct plastin isoform which is specifically expressed at high levels in the small intestine. The L isoform is expressed only in hemopoietic cell lineages, while the T isoform has been found in all other normal cells of solid tissues that have replicative potential (fibroblasts, endothelial cells, epithelial cells, melanocytes, etc.). The C-terminal 570 amino acids of the T-plastin and L-plastin proteins are 83 % identical. It contains a potential calcium-binding site near the N terminus. Alternate splicing results in multiple transcript variants.,PLS3,BMND18,T-plastin,plastin-3,Signal Transduction,Cell Biology & Developmental Biology,Cytoskeleton,Microfilaments,Extracellular Matrix,PLS3</p> |
| Molecular Weight: | 65 kDa/69 kDa/70 kDa |
| Gene ID: | 5358 |
| UniProt: | P13797 |

Application Details

| | |
|--------------------|-----------------------------------|
| Application Notes: | WB,1:200 - 1:2000,IP,1:50 - 1:100 |
| Restrictions: | For Research Use only |

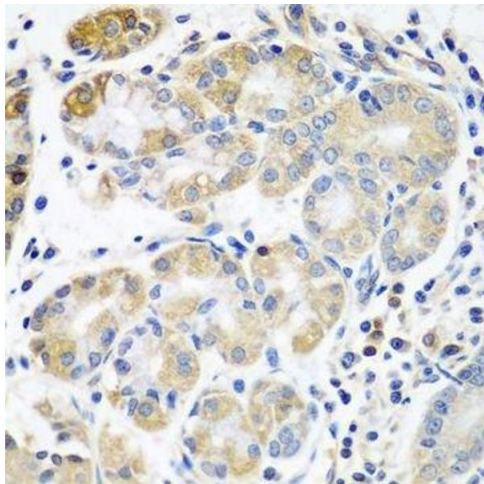
Handling

| | |
|--------------------|--|
| Buffer: | PBS with 0.02 % sodium azide,50 % glycerol, pH 7.3. |
| Preservative: | Sodium azide |
| Precaution of Use: | This product contains Sodium azide: a POISONOUS AND HAZARDOUS SUBSTANCE which should be handled by trained staff only. |
| Storage: | -20 °C |
| Storage Comment: | Store at -20°C. Avoid freeze / thaw cycles. |



Western Blotting

Image 1. Western blot analysis of extracts of various cell lines, using PLS3 antibody.



Immunohistochemistry (Paraffin-embedded Sections)

Image 2. Immunohistochemistry of paraffin-embedded human stomach using PLS3 antibody.