

Datasheet for ABIN1682332  
**anti-PSMA7 antibody (AA 1-248)**

## 7 Images

[Go to Product page](#)

## Overview

Quantity:	100 µg
Target:	PSMA7
Binding Specificity:	AA 1-248
Reactivity:	Human
Host:	Rabbit
Clonality:	Polyclonal
Application:	Western Blotting (WB), Immunohistochemistry (IHC), Immunofluorescence (IF)

## Product Details

Immunogen:	Recombinant fusion protein containing a sequence corresponding to amino acids 1-248 of human PSMA7 (NP_002783.1).
Sequence:	MSYDRAITVF SPDGHLFQVE YAQEAVKKGS TAVGVRGRDI VVLGVEKKS SV AKLQDERTVR KICALDDNVC MAFAGLTADA RIVINRARVE CQSHRLTVED PVTVEYITRY IASLKQRYTQ SNGRRPFGIS ALIVGFDFDG TPRLYQTDPS GTYHAWKANA IGRGAKSVRE FLEKNYTDEA IETDDLTIKL VIKALLEVVQ SGGKNIELAV MRRDQSLKIL NP EEIEKYVA EIEKEKEENE KKKQKKAS
Isotype:	IgG
Cross-Reactivity:	Human, Mouse, Rat
Characteristics:	Polyclonal Antibodies

## Target Details

Target:	PSMA7
---------	-------

## Target Details

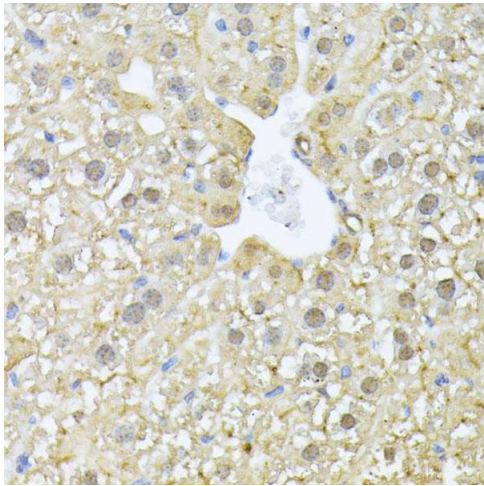
Alternative Name:	PSMA7 ( <a href="#">PSMA7 Products</a> )
Background:	<p>The 26S proteasome is a multicatalytic proteinase complex with a highly ordered structure composed of 2 complexes, a 20S core and a 19S regulator. The 20S core is composed of 4 rings of 28 non-identical subunits, 2 rings are composed of 7 alpha subunits and 2 rings are composed of 7 beta subunits. Proteasomes are distributed throughout eukaryotic cells at a high concentration and cleave peptides in an ATP/ubiquitin-dependent process in a non-lysosomal pathway. This gene encodes a member of the peptidase T1A family that functions as a 20S core alpha subunit. The encoded protein interacts with the hepatitis B virus X protein and plays a role in regulating hepatitis C virus internal ribosome entry site (IRES) activity, an activity essential for viral replication. The encoded protein also plays a role in the cellular stress response by regulating hypoxia-inducible factor-1alpha. A pseudogene of this gene is located on the long arm of chromosome 9.,PSMA7,C6,HEL-S-276,HSPC,RC6-1,XAPC7,Cell Biology &amp; Developmental Biology,Ubiquitin,PSMA7</p>
Molecular Weight:	16 kDa/20 kDa/27 kDa
Gene ID:	5688
UniProt:	<a href="#">O14818</a>
Pathways:	<a href="#">Mitotic G1-G1/S Phases</a> , <a href="#">DNA Replication</a> , <a href="#">Synthesis of DNA</a>

## Application Details

Application Notes:	WB,1:500 - 1:2000,IHC,1:50 - 1:100,IF,1:50 - 1:100
Restrictions:	For Research Use only

## Handling

Buffer:	PBS with 0.02 % sodium azide,50 % glycerol, pH 7.3.
Preservative:	Sodium azide
Precaution of Use:	This product contains Sodium azide: a POISONOUS AND HAZARDOUS SUBSTANCE which should be handled by trained staff only.
Storage:	-20 °C
Storage Comment:	Store at -20°C. Avoid freeze / thaw cycles.

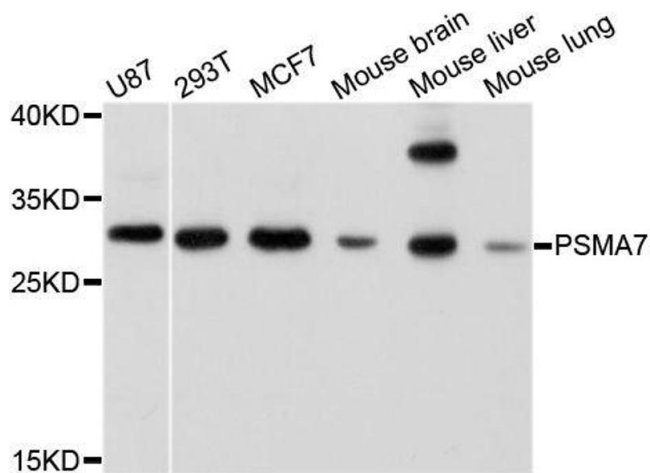


#### Immunohistochemistry

**Image 1.** Immunohistochemistry of paraffin-embedded mouse liver using PSM antibody (ABIN1682332, ABIN3018467, ABIN3018468 and ABIN6220474) at dilution of 1:100 (40x lens). Perform microwave antigen retrieval with 10 mM PBS buffer pH 7.2 before commencing with IHC staining protocol.

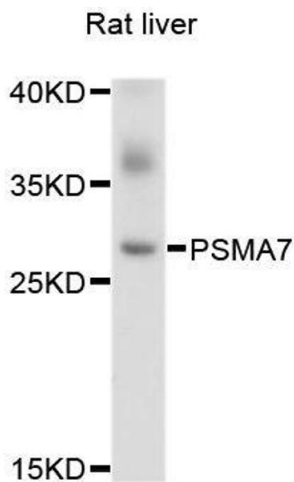
#### Western Blotting

**Image 2.** Western blot analysis of extracts of various cell lines, using PSMA7 antibody.



#### Western Blotting

**Image 3.** Western blot analysis of extracts of rat liver, using PSMA7 antibody.



Please check the [product details page](#) for more images. Overall 7 images are available for ABIN1682332.