

Datasheet for ABIN1682336  
**anti-PSMB6 antibody (AA 35-239)**

## 2 Images

[Go to Product page](#)

## Overview

Quantity:	100 µg
Target:	PSMB6
Binding Specificity:	AA 35-239
Reactivity:	Human
Host:	Rabbit
Clonality:	Polyclonal
Conjugate:	This PSMB6 antibody is un-conjugated
Application:	Western Blotting (WB), Immunohistochemistry (IHC), Immunofluorescence (IF)

## Product Details

Immunogen:	Recombinant fusion protein containing a sequence corresponding to amino acids 35-239 of human PSMB6 (NP_002789.1).
Sequence:	TTIMAVQFDG GVVLGADSRT TTGSYIANRV TDKLTPIHDR IFCCRS GSAA DTQAVADAVT YQLGFHSIEL NEPLVHTAA SLFKEMCYRY REDLMAGIII AGWDPQEGGQ VYSVPMGGMM VRQSFAIGGS GSSYIYGVD ATYREGMTKE ECLQFTANAL ALAMERDGSS GGVIRLAAIA ESGVERQVLL GDQIPKFAVA TLPPA
Isotype:	IgG
Cross-Reactivity:	Human, Mouse, Rat
Characteristics:	Polyclonal Antibodies

## Target Details

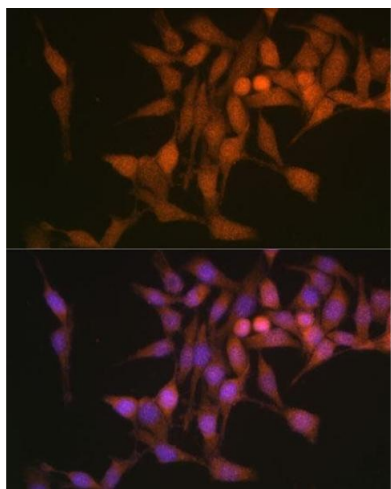
Target:	PSMB6
Alternative Name:	PSMB6 ( <a href="#">PSMB6 Products</a> )
Background:	<p>The proteasome is a multicatalytic proteinase complex with a highly ordered ring-shaped 20S core structure. The core structure is composed of 4 rings of 28 non-identical subunits, 2 rings are composed of 7 alpha subunits and 2 rings are composed of 7 beta subunits. Proteasomes are distributed throughout eukaryotic cells at a high concentration and cleave peptides in an ATP/ubiquitin-dependent process in a non-lysosomal pathway. The encoded protein is a member of the proteasome B-type family, also known as the T1B family, and is a 20S core beta subunit in the proteasome. Alternatively spliced transcript variants encoding multiple isoforms have been observed for this gene.,PSMB6,DELTA,LMPY,Y,Cell Biology &amp; Developmental Biology,Ubiquitin,PSMB6</p>
Molecular Weight:	25 kDa
Gene ID:	5694
UniProt:	<a href="#">P28072</a>
Pathways:	<a href="#">Mitotic G1-G1/S Phases</a> , <a href="#">DNA Replication</a> , <a href="#">Synthesis of DNA</a>

## Application Details

Application Notes:	WB,1:500 - 1:2000,IHC,1:50 - 1:100,IF,1:50 - 1:100
Restrictions:	For Research Use only

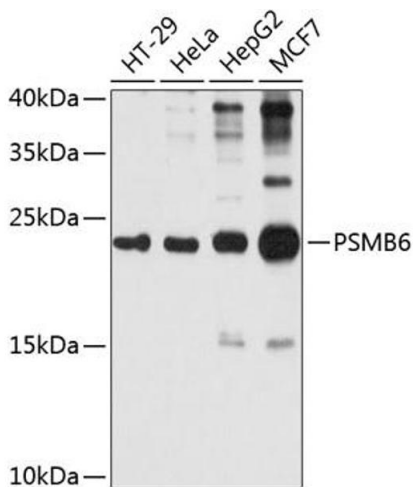
## Handling

Buffer:	PBS with 0.02 % sodium azide,50 % glycerol, pH 7.3.
Preservative:	Sodium azide
Precaution of Use:	This product contains Sodium azide: a POISONOUS AND HAZARDOUS SUBSTANCE which should be handled by trained staff only.
Storage:	-20 °C
Storage Comment:	Store at -20°C. Avoid freeze / thaw cycles.



### Immunofluorescence

**Image 1.** Immunofluorescence analysis of HeLa cells using PSMB6 Polyclonal Antibody (ABIN1682336, ABIN3018469, ABIN3018470 and ABIN6220475) at dilution of 1:100 (40x lens). Blue: DAPI for nuclear staining.



### Western Blotting

**Image 2.** Western blot analysis of extracts of various cell lines, using PSMB6 antibody (ABIN1682336, ABIN3018469, ABIN3018470 and ABIN6220475) at 1:1000 dilution. Secondary antibody: HRP Goat Anti-Rabbit IgG (H+L) (ABIN1684268 and ABIN3020597) at 1:10000 dilution. Lysates/proteins: 25 µg per lane. Blocking buffer: 3 % nonfat dry milk in TBST. Detection: ECL Basic Kit (RM00020). Exposure time: 20s.