

Datasheet for ABIN1682372
anti-PTGER3 antibody (AA 1-53)



[Go to Product page](#)

1 Image

Overview

Quantity:	100 µg
Target:	PTGER3
Binding Specificity:	AA 1-53
Reactivity:	Human
Host:	Rabbit
Clonality:	Polyclonal
Conjugate:	This PTGER3 antibody is un-conjugated
Application:	Western Blotting (WB)

Product Details

Immunogen:	Recombinant fusion protein containing a sequence corresponding to amino acids 1-53 of human PGE receptor EP3 (PTGER3) (NP_942009.1).
Sequence:	MKETRGYGGD APFCTRLNHS YTG MWAPERS AEARGNLTRP PGSGEDCGSV SVA
Isotype:	IgG
Cross-Reactivity:	Mouse, Rat
Characteristics:	Polyclonal Antibodies

Target Details

Target:	PTGER3
Alternative Name:	PTGER3 (PTGER3 Products)

Target Details

Background: The protein encoded by this gene is a member of the G-protein coupled receptor family. This protein is one of four receptors identified for prostaglandin E2 (PGE2). This receptor may have many biological functions, which involve digestion, nervous system, kidney reabsorption, and uterine contraction activities. Studies of the mouse counterpart suggest that this receptor may also mediate adrenocorticotrophic hormone response as well as fever generation in response to exogenous and endogenous stimuli. Multiple transcript variants encoding different isoforms have been found for this gene.,PTGER3,EP3,EP3-I,EP3-II,EP3-III,EP3-IV,EP3-VI,EP3e,PGE2-R,Signal Transduction,G protein signaling,G-Protein-Coupled Receptors(GPCR),Endocrine & Metabolism,Endocrine and metabolic diseases,Obesity,PTGER3

Molecular Weight: 40 kDa/41 kDa/42 kDa/43 kDa/44 kDa/46 kDa/47 kDa

Gene ID: 5733

UniProt: [P43115](#)

Application Details

Application Notes: WB,1:500 - 1:2000

Restrictions: For Research Use only

Handling

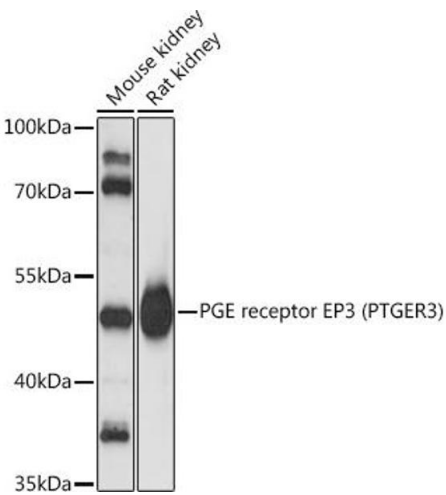
Buffer: PBS with 0.02 % sodium azide,50 % glycerol, pH 7.3.

Preservative: Sodium azide

Precaution of Use: This product contains Sodium azide: a POISONOUS AND HAZARDOUS SUBSTANCE which should be handled by trained staff only.

Storage: -20 °C

Storage Comment: Store at -20°C. Avoid freeze / thaw cycles.



Western Blotting

Image 1. Western blot analysis of extracts of various cell lines, using PGE receptor EP3 (PTGER3) antibody (ABIN1682372, ABIN3018477, ABIN3018478 and ABIN6220477) at 1:3000 dilution. Secondary antibody: HRP Goat Anti-Rabbit IgG (H+L) (ABIN1684268 and ABIN3020597) at 1:10000 dilution. Lysates/proteins: 25 µg per lane. Blocking buffer: 3 % nonfat dry milk in TBST. Detection: ECL Basic Kit (RM00020). Exposure time: 1s.