



[Go to Product page](#)

Datasheet for ABIN1682420  
**anti-RAB10 antibody (AA 1-190)**

1 Image

Overview

Quantity:	100 µg
Target:	RAB10
Binding Specificity:	AA 1-190
Reactivity:	Human
Host:	Rabbit
Clonality:	Polyclonal
Conjugate:	This RAB10 antibody is un-conjugated
Application:	Western Blotting (WB)

Product Details

Immunogen:	Recombinant fusion protein containing a sequence corresponding to amino acids 1-190 of human RAB10 (NP_057215.3).
Sequence:	MAKPTYDLLF KLLIGDSGV GKTCVLFRES DDAFNNTFIS TIGIDFKIKT VELQGKKIKL QIWDTAGQER FHTITTSYYR GAMGIMLVYD ITNGKSFENI SKWLRNIDEH ANEDVERMLL GNKCDMDDKR VVPKGKGEQI AREHGIRFFE TSAKANINIE KAFLTLAEDI LRKTPVKEPN SENVDISSGG
Isotype:	IgG
Cross-Reactivity:	Human
Characteristics:	Polyclonal Antibodies

## Target Details

---

Target:	RAB10
Alternative Name:	RAB10 ( <a href="#">RAB10 Products</a> )
Background:	RAB10 belongs to the RAS (see HRAS, MIM 190020) superfamily of small GTPases. RAB proteins localize to exocytic and endocytic compartments and regulate intracellular vesicle trafficking (Bao et al., 1998 [PubMed 9918381]).[supplied by OMIM, Mar 2009],RAB10,Signal Transduction,G protein signaling,Signal Transduction,RAB10
Molecular Weight:	22 kDa
Gene ID:	10890
UniProt:	<a href="#">P61026</a>
Pathways:	<a href="#">Asymmetric Protein Localization</a> , <a href="#">SARS-CoV-2 Protein Interactome</a>

## Application Details

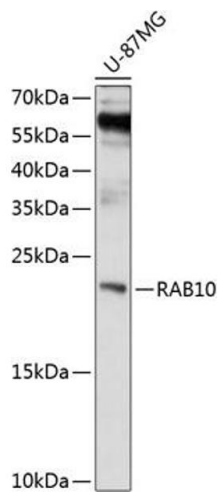
---

Application Notes:	WB,1:500 - 1:2000
Restrictions:	For Research Use only

## Handling

---

Buffer:	PBS with 0.02 % sodium azide,50 % glycerol, pH 7.3.
Preservative:	Sodium azide
Precaution of Use:	This product contains Sodium azide: a POISONOUS AND HAZARDOUS SUBSTANCE which should be handled by trained staff only.
Storage:	-20 °C
Storage Comment:	Store at -20°C. Avoid freeze / thaw cycles.



### Western Blotting

**Image 1.** Western blot analysis of extracts of U-87MG cells, using R antibody (ABIN1682420, ABIN3018951, ABIN3018952 and ABIN6220641) at 1:1000 dilution. Secondary antibody: HRP Goat Anti-Rabbit IgG (H+L) (ABIN1684268 and ABIN3020597) at 1:10000 dilution. Lysates/proteins: 25 µg per lane. Blocking buffer: 3 % nonfat dry milk in TBST. Detection: ECL Basic Kit (RM00020). Exposure time: 90s.