



Datasheet for ABIN1682540
anti-RMI1 antibody (AA 1-350)



[Go to Product page](#)

1 Image

Overview

Quantity:	100 µg
Target:	RMI1
Binding Specificity:	AA 1-350
Reactivity:	Human
Host:	Rabbit
Clonality:	Polyclonal
Conjugate:	This RMI1 antibody is un-conjugated
Application:	Western Blotting (WB)

Product Details

Immunogen:	Recombinant fusion protein containing a sequence corresponding to amino acids 1-350 of human RMI1 (NP_079221.2).
Sequence:	MNVT SIALRA ETWLLAAWHV KVPPMWLEAC INWIQEENNN VNLSQAQMNK QVFEQWLLTD LRDLEHPLLP DGILEIPKGE LNGFYALQIN SLVDV SQPAY SSIQKLRGKN TTNDLVTAEA QVTPKPWEAK PSRMLMLQLT DGIVQIQGME YQPIPIHSD LPPGTKILY GNISFRLGVL LLKPENVKVL GGEVDALLEE YAQEKVLARL IGEVDLVVSV IPNNSNENIP RVTDLVDPAL GPSDEELLAS LDENDEL TAN NDTSSERCFT TGSSSNTIPT RQSSFEPEFV ISPRPKKEEPS NLSIHVMDGE LDDFSLEEAL LLEETVQKEQ METKELQPLT FNRNADRSIE
Isotype:	IgG
Cross-Reactivity:	Human, Mouse
Characteristics:	Polyclonal Antibodies

Target Details

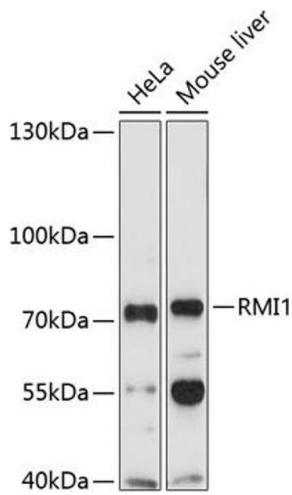
Target:	RMI1
Alternative Name:	RMI1 (RMI1 Products)
Background:	RMI1 is a component of protein complexes that limit DNA crossover formation via the dissolution of double Holliday junctions (Raynard et al., 2006 [PubMed 16595695]).[supplied by OMIM, Mar 2008],RMI1,BLAP75,C9orf76,FAAP75,Epigenetics & Nuclear Signaling,DNA Damage & Repair,RMI1
Molecular Weight:	70 kDa
Gene ID:	80010
UniProt:	Q9H9A7
Pathways:	DNA Damage Repair

Application Details

Application Notes:	WB,1:200 - 1:2000
Restrictions:	For Research Use only

Handling

Buffer:	PBS with 0.02 % sodium azide,50 % glycerol, pH 7.3.
Preservative:	Sodium azide
Precaution of Use:	This product contains Sodium azide: a POISONOUS AND HAZARDOUS SUBSTANCE which should be handled by trained staff only.
Storage:	-20 °C
Storage Comment:	Store at -20°C. Avoid freeze / thaw cycles.



Western Blotting

Image 1. Western blot analysis of extracts of various cell lines, using RMI1 Antibody (ABIN1682540, ABIN3019316, ABIN3019317, ABIN5664937 and ABIN6220821) at 1:1000 dilution. Secondary antibody: HRP Goat Anti-Rabbit IgG (H+L) (ABIN1684268 and ABIN3020597) at 1:10000 dilution. Lysates/proteins: 25 µg per lane. Blocking buffer: 3 % nonfat dry milk in TBST. Detection: ECL Enhanced Kit (RM00021). Exposure time: 90s.