

Datasheet for ABIN1682573

anti-CD48 antibody

4 Images

[Go to Product page](#)

Overview

| | |
|--------------|-----------------------|
| Quantity: | 100 µg |
| Target: | CD48 |
| Reactivity: | Human |
| Host: | Rabbit |
| Clonality: | Monoclonal |
| Application: | Western Blotting (WB) |

Product Details

| | |
|-------------------|---|
| Immunogen: | A synthesized peptide derived from human CD48 |
| Isotype: | IgG |
| Cross-Reactivity: | Human |
| Characteristics: | Monoclonal Antibodies |
| Purification: | Affinity purification |

Target Details

| | |
|-------------------|--|
| Target: | CD48 |
| Alternative Name: | CD48 (CD48 Products) |
| Background: | This gene encodes a member of the CD2 subfamily of immunoglobulin-like receptors which includes SLAM (signaling lymphocyte activation molecules) proteins. The encoded protein is found on the surface of lymphocytes and other immune cells, dendritic cells and endothelial cells, and participates in activation and differentiation pathways in these cells. The encoded |

Target Details

protein does not have a transmembrane domain, however, but is held at the cell surface by a GPI anchor via a C-terminal domain which maybe cleaved to yield a soluble form of the receptor. Multiple transcript variants encoding different isoforms have been found for this gene. [provided by RefSeq, Dec 2011],BCM1, BLAST, BLAST1, MEM-102, SLAMF2, hCD48, mCD48,CDs,Immunology & Inflammation,CD48

Molecular Weight: 43 kDa

Gene ID: 962

UniProt: [P09326](#)

Application Details

Application Notes: WB,1:500 - 1:2000

Restrictions: For Research Use only

Handling

Buffer: PBS with 0.02 % sodium azide,0.05 % BSA,50 % glycerol, pH 7.3.

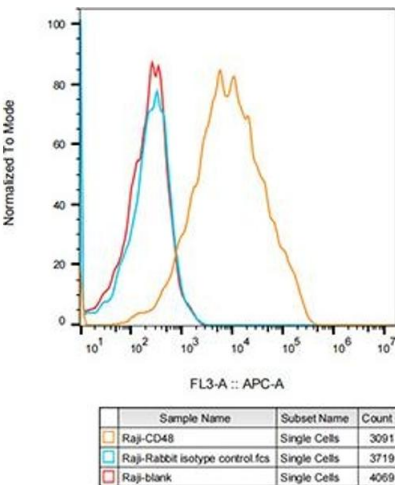
Preservative: Sodium azide

Precaution of Use: This product contains Sodium azide: a POISONOUS AND HAZARDOUS SUBSTANCE which should be handled by trained staff only.

Storage: -20 °C

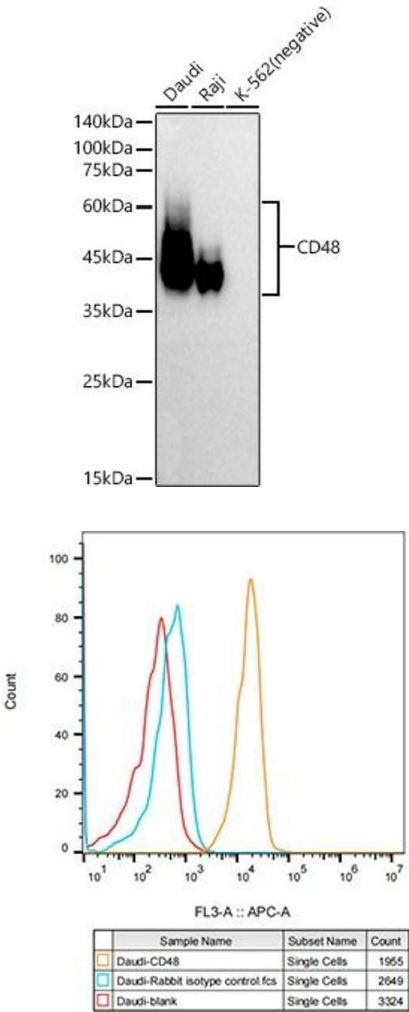
Storage Comment: Store at -20°C. Avoid freeze / thaw cycles.

Images



Flow Cytometry

Image 1. Flow cytometry: Raji cells were stained with Rabbit IgG isotype control (, 10 µg/mL, blue line) or CD48 Rabbit mAb (ABIN1682573, ABIN3018515, ABIN3018516 and ABIN7101621, 10 µg/mL orange line), followed by Alexa Fluor 647 conjugated goat anti-rabbit pAb(1:600 dilution) staining. Non-fluorescently stained Raji cells were used as blank control (red line).



Western Blotting

Image 2. Western blot analysis of extracts of various cell lines, using CD48 antibody (ABIN1682573, ABIN3018515, ABIN3018516 and ABIN7101621) at 1:11000 dilution. Secondary antibody: HRP Goat Anti-Rabbit IgG (H+L) (ABIN1684268 and ABIN3020597) at 1:10000 dilution. Lysates/proteins: 25 µg per lane. Blocking buffer: 3 % nonfat dry milk in TBST. Detection: ECL Basic Kit (RM00020). Exposure time: 90s.

Flow Cytometry

Image 3. Flow cytometry: Daudi cells were stained with Rabbit IgG isotype control (, 10 µg/mL, blue line) or CD48 Rabbit mAb (ABIN1682573, ABIN3018515, ABIN3018516 and ABIN7101621, 10 µg/mL orange line), followed by Alexa Fluor 647 conjugated goat anti-rabbit pAb(1:600 dilution) staining. Non-fluorescently stained Daudi cells were used as blank control (red line).

Please check the [product details page](#) for more images. Overall 4 images are available for ABIN1682573.