

Datasheet for ABIN1682575
anti-RPL23 antibody (AA 1-140)[Go to Product page](#)

7 Images

Overview

Quantity:	100 µg
Target:	RPL23
Binding Specificity:	AA 1-140
Reactivity:	Human
Host:	Rabbit
Clonality:	Polyclonal
Conjugate:	This RPL23 antibody is un-conjugated
Application:	Western Blotting (WB), Immunohistochemistry (IHC), Immunofluorescence (IF)

Product Details

Immunogen:	Recombinant fusion protein containing a sequence corresponding to amino acids 1-140 of human RPL23 (NP_000969.1).
Sequence:	MSKRGRGGSS GAKFRISLGL PVGAVINCAD NTGAKNLYII SVKGIKGRIN RLPAAGVGDM VMATVKKGKGP ELRKKVHPAV VIRQRKSYRR KDGVFLYFED NAGVIVNNKG EMKGSAITGP VAKECADLWP RIASNAGSIA
Isotype:	IgG
Cross-Reactivity:	Human, Mouse, Rat
Characteristics:	Polyclonal Antibodies

Target Details

Target:	RPL23
---------	-------

Target Details

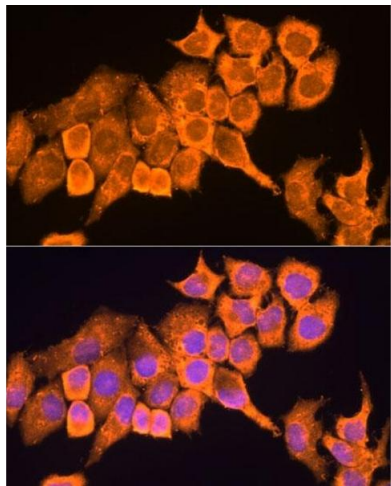
Alternative Name:	RPL23 (RPL23 Products)
Background:	Ribosomes, the organelles that catalyze protein synthesis, consist of a small 40S subunit and a large 60S subunit. Together these subunits are composed of 4 RNA species and approximately 80 structurally distinct proteins. This gene encodes a ribosomal protein that is a component of the 60S subunit. The protein belongs to the L14P family of ribosomal proteins. It is located in the cytoplasm. This gene has been referred to as rpl17 because the encoded protein shares amino acid identity with ribosomal protein L17 from <i>Saccharomyces cerevisiae</i> , however, its official symbol is RPL23. As is typical for genes encoding ribosomal proteins, there are multiple processed pseudogenes of this gene dispersed through the genome.,RPL23,L23,rpl17,Epigenetics & Nuclear Signaling,RNA Binding,RPL23
Molecular Weight:	14 kDa
Gene ID:	9349
UniProt:	P62829
Pathways:	Protein targeting to Nucleus

Application Details

Application Notes:	WB,1:500 - 1:4000,IHC,1:50 - 1:200,IF,1:50 - 1:200
Restrictions:	For Research Use only

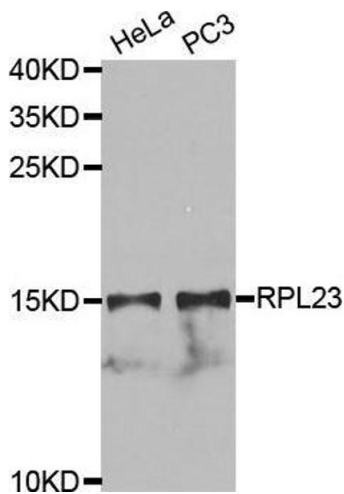
Handling

Buffer:	PBS with 0.02 % sodium azide,50 % glycerol, pH 7.3.
Preservative:	Sodium azide
Precaution of Use:	This product contains Sodium azide: a POISONOUS AND HAZARDOUS SUBSTANCE which should be handled by trained staff only.
Storage:	-20 °C
Storage Comment:	Store at -20°C. Avoid freeze / thaw cycles.



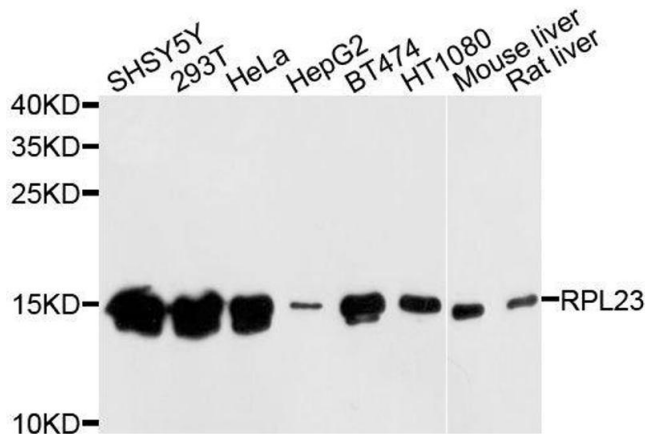
Immunofluorescence

Image 1. Immunofluorescence analysis of HeLa cells using RPL23 antibody (ABIN1682575, ABIN5664722, ABIN5664724 and ABIN6220574) at dilution of 1:100. Blue: DAPI for nuclear staining.



Western Blotting

Image 2.



Western Blotting

Image 3. Western blot analysis of extracts of various cell lines, using RPL23 antibody.

Please check the [product details page](#) for more images. Overall 7 images are available for ABIN1682575.