

Datasheet for ABIN1682576
anti-RPL23A antibody (AA 1-156)[Go to Product page](#)

8 Images

Overview

Quantity:	100 µg
Target:	RPL23A
Binding Specificity:	AA 1-156
Reactivity:	Human
Host:	Rabbit
Clonality:	Polyclonal
Application:	Western Blotting (WB), Immunohistochemistry (IHC), Immunofluorescence (IF)

Product Details

Immunogen:	Recombinant fusion protein containing a sequence corresponding to amino acids 1-156 of human RPL23A (NP_000975.2).
Sequence:	MAPKAKKEAP APPKAEAKAK ALKAKKAVLK GVHSHKKKKI RTSPTFRRPK TLRLRRQPKY PRKSAPRRNK LDHYAIKFP LTTESAMKKI EDNNTLVFIV DVKANKHQIK QAVKKLYDID VAKVNTLIRP DGEKKAYVRL APDYDALDVA NKIGII
Isotype:	IgG
Cross-Reactivity:	Human, Mouse, Rat
Characteristics:	Polyclonal Antibodies

Target Details

Target:	RPL23A
Alternative Name:	RPL23A (RPL23A Products)

Target Details

Background: Ribosomes, the organelles that catalyze protein synthesis, consist of a small 40S subunit and a large 60S subunit. Together these subunits are composed of 4 RNA species and approximately 80 structurally distinct proteins. This gene encodes a ribosomal protein that is a component of the 60S subunit. The protein belongs to the L23P family of ribosomal proteins. It is located in the cytoplasm. The protein may be one of the target molecules involved in mediating growth inhibition by interferon. In yeast, the corresponding protein binds to a specific site on the 26S rRNA. This gene is co-transcribed with the U42A, U42B, U101A, and U101B small nucleolar RNA genes, which are located in its third, first, second, and fourth introns, respectively. As is typical for genes encoding ribosomal proteins, there are multiple processed pseudogenes of this gene dispersed through the genome.,RPL23A,L23A,MDA20,Epigenetics & Nuclear Signaling,RNA Binding,RPL23A

Molecular Weight: 17 kDa

Gene ID: 6147

UniProt: [P62750](#)

Application Details

Application Notes: WB,1:500 - 1:2000,IHC,1:50 - 1:200,IF,1:50 - 1:100

Restrictions: For Research Use only

Handling

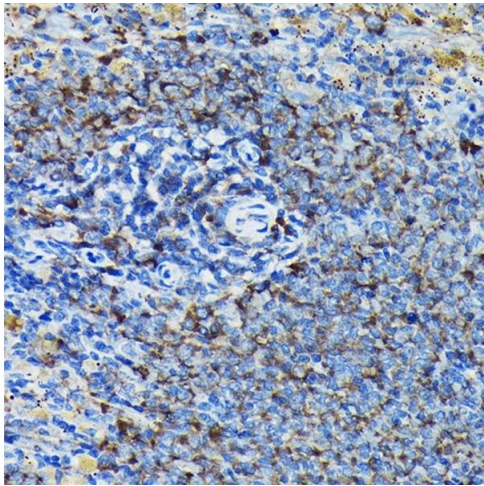
Buffer: PBS with 0.02 % sodium azide,50 % glycerol, pH 7.3.

Preservative: Sodium azide

Precaution of Use: This product contains Sodium azide: a POISONOUS AND HAZARDOUS SUBSTANCE which should be handled by trained staff only.

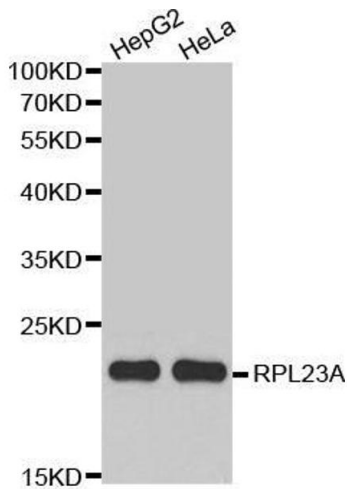
Storage: -20 °C

Storage Comment: Store at -20°C. Avoid freeze / thaw cycles.



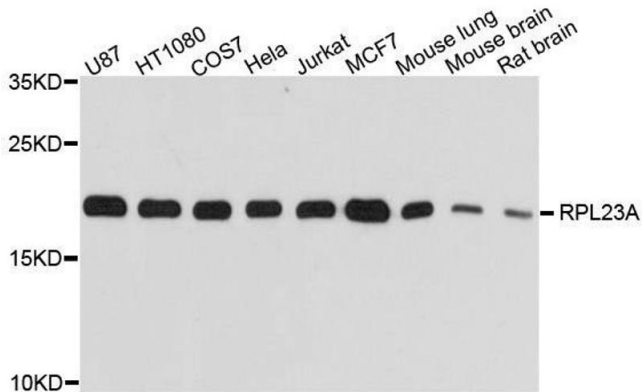
Immunohistochemistry

Image 1. Immunohistochemistry of paraffin-embedded mouse spleen using RPL23A Rabbit pAb (ABIN1682576, ABIN3018519, ABIN3018520 and ABIN6220494) at dilution of 1:100 (40x lens). Perform high pressure antigen retrieval with 10 mM citrate buffer pH 6.0 before commencing with IHC staining protocol.



Western Blotting

Image 2. Western blot analysis of extracts of various cell lines, using RPL23A antibody.



Western Blotting

Image 3. Western blot analysis of extracts of various cell lines, using RPL23A antibody.

Please check the [product details page](#) for more images. Overall 8 images are available for ABIN1682576.