

Datasheet for ABIN1682610  
**anti-S100A3 antibody (AA 1-101)**[Go to Product page](#)

## 2 Images

## Overview

Quantity:	100 µg
Target:	S100A3
Binding Specificity:	AA 1-101
Reactivity:	Human
Host:	Rabbit
Clonality:	Polyclonal
Conjugate:	This S100A3 antibody is un-conjugated
Application:	Western Blotting (WB)

## Product Details

Immunogen:	Recombinant fusion protein containing a sequence corresponding to amino acids 1-101 of human S100A3 (NP_002951.1).
Sequence:	MARPLEQAVA AIVCTFQEYA GRCGDKYKLC QAELKELLQK ELATWTPTEF RECDYNKFMS VLDTNKDCEV DFVEYVRS LA CLCLYCHEYF KDCPSEPPCS Q
Isotype:	IgG
Cross-Reactivity:	Human, Mouse, Rat
Characteristics:	Polyclonal Antibodies

## Target Details

Target:	S100A3
---------	--------

## Target Details

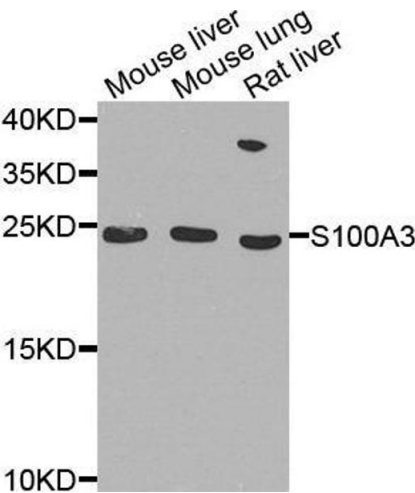
Alternative Name:	S100A3 ( <a href="#">S100A3 Products</a> )
Background:	<p>The protein encoded by this gene is a member of the S100 family of proteins containing 2 EF-hand calcium-binding motifs. S100 proteins are localized in the cytoplasm and/or nucleus of a wide range of cells, and involved in the regulation of a number of cellular processes such as cell cycle progression and differentiation. S100 genes include at least 13 members which are located as a cluster on chromosome 1q21. This protein has the highest content of cysteines of all S100 proteins, has a high affinity for Zinc, and is highly expressed in human hair cuticle. The precise function of this protein is unknown.,S100A3,S100E,Signal Transduction,Neuroscience,Calcium Signaling,S100A3</p>
Molecular Weight:	11 kDa
Gene ID:	6274
UniProt:	<a href="#">P33764</a>
Pathways:	<a href="#">S100 Proteins</a>

## Application Details

Application Notes:	WB,1:500 - 1:2000
Restrictions:	For Research Use only

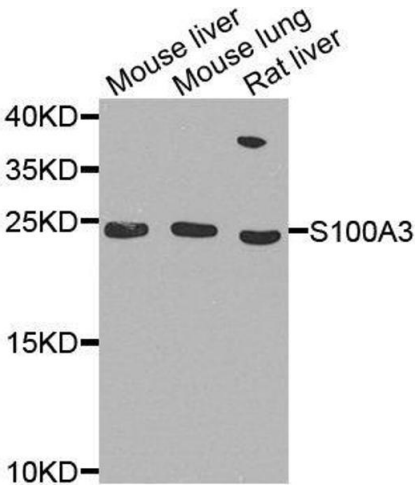
## Handling

Buffer:	PBS with 0.02 % sodium azide,50 % glycerol, pH 7.3.
Preservative:	Sodium azide
Precaution of Use:	This product contains Sodium azide: a POISONOUS AND HAZARDOUS SUBSTANCE which should be handled by trained staff only.
Storage:	-20 °C
Storage Comment:	Store at -20°C. Avoid freeze / thaw cycles.



Western Blotting

Image 1.



Western Blotting

Image 2. Western blot analysis of extracts of various cell lines, using S100A3 antibody.