

Datasheet for ABIN1682611  
**anti-S100A6 antibody (AA 1-90)**

## 2 Images

[Go to Product page](#)

## Overview

Quantity:	100 µg
Target:	S100A6
Binding Specificity:	AA 1-90
Reactivity:	Human
Host:	Rabbit
Clonality:	Polyclonal
Conjugate:	This S100A6 antibody is un-conjugated
Application:	Western Blotting (WB), Immunohistochemistry (IHC), Immunoprecipitation (IP), Immunofluorescence (IF)

## Product Details

Immunogen:	Recombinant fusion protein containing a sequence corresponding to amino acids 1-90 of human S100A6 (NP_055439.1).
Sequence:	MACPLDQAIG LLVAIFHKYS GREGDKHTLS KKEKELIQK ELTIGSKLQD AEIARLMEDL DRNKDQEVNF QEYVTF LGAL ALIYNEALKG
Isotype:	IgG
Cross-Reactivity:	Human, Mouse, Rat
Characteristics:	Polyclonal Antibodies

## Target Details

Target:	S100A6
---------	--------

## Target Details

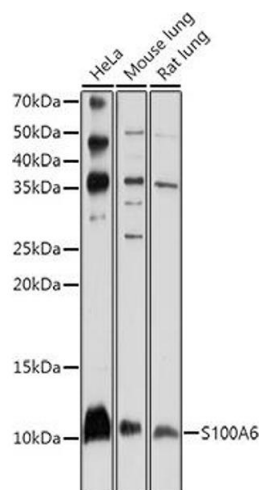
Alternative Name:	S100A6 ( <a href="#">S100A6 Products</a> )
Background:	The protein encoded by this gene is a member of the S100 family of proteins containing 2 EF-hand calcium-binding motifs. S100 proteins are localized in the cytoplasm and/or nucleus of a wide range of cells, and involved in the regulation of a number of cellular processes such as cell cycle progression and differentiation. S100 genes include at least 13 members which are located as a cluster on chromosome 1q21. This protein may function in stimulation of Ca <sup>2+</sup> -dependent insulin release, stimulation of prolactin secretion, and exocytosis. Chromosomal rearrangements and altered expression of this gene have been implicated in melanoma.,S100A6,2A9,5B10,CABP,CACY,PRA,Epigenetics & Nuclear Signaling,Cell Biology & Developmental Biology,Cell Cycle,Cell differentiation,Growth factor,S100A6
Molecular Weight:	10 kDa
Gene ID:	6277
UniProt:	<a href="#">P06703</a>
Pathways:	<a href="#">S100 Proteins</a>

## Application Details

Application Notes:	WB,1:200 - 1:2000,IHC,1:50 - 1:200,IF,1:50 - 1:200,IP,1:20 - 1:50
Restrictions:	For Research Use only

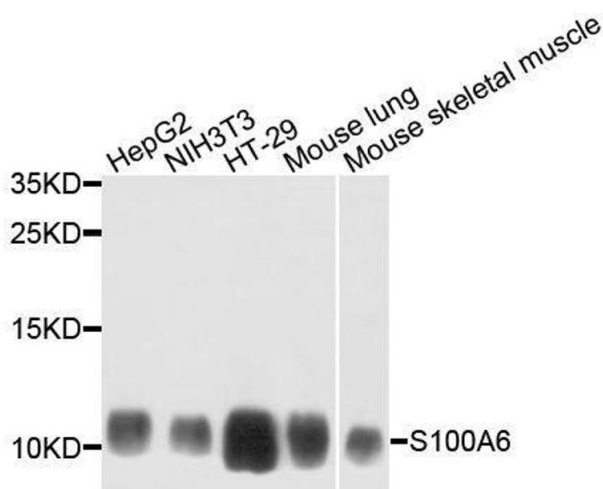
## Handling

Buffer:	PBS with 0.02 % sodium azide,50 % glycerol, pH 7.3.
Preservative:	Sodium azide
Precaution of Use:	This product contains Sodium azide: a POISONOUS AND HAZARDOUS SUBSTANCE which should be handled by trained staff only.
Storage:	-20 °C
Storage Comment:	Store at -20°C. Avoid freeze / thaw cycles.



#### Western Blotting

**Image 1.** Western blot analysis of extracts of various cell lines, using S100 antibody (ABIN1682611, ABIN3018540, ABIN3018541 and ABIN5664641) at 1:1000 dilution. Secondary antibody: HRP Goat Anti-Rabbit IgG (H+L) (ABIN1684268 and ABIN3020597) at 1:10000 dilution. Lysates/proteins: 25 µg per lane. Blocking buffer: 3 % nonfat dry milk in TBST. Detection: ECL Basic Kit (RM00020). Exposure time: 60s.



#### Western Blotting

**Image 2.** Western blot analysis of extracts of various cell lines, using S100A6 antibody.