

Datasheet for ABIN1682657  
**anti-SERPINA10 antibody (AA 165-444)**



[Go to Product page](#)

3 Images

## Overview

Quantity:	100 µg
Target:	SERPINA10
Binding Specificity:	AA 165-444
Reactivity:	Human
Host:	Rabbit
Clonality:	Polyclonal
Conjugate:	This SERPINA10 antibody is un-conjugated
Application:	Western Blotting (WB), Immunofluorescence (IF)

## Product Details

Immunogen:	Recombinant fusion protein containing a sequence corresponding to amino acids 165-444 of human SERPINA10 (NP_001094077.1).
Sequence:	FAFIHKDFDV KETFFNLSKR YFDTECVPMN FRNASQAKRL MNHYINKETR GKIPKLFDEI NPETKLILVD YILFKGKWLTP FDPVFTEVD TFHLDKYKTI KVPMMYGAGK FASTFDKNFR CHVLKLPYQG NATMLVVLME KMGDHLALED YLTDDLVTW LRNMKTRNME VFFPKFKLDQ KYEMHELLRQ MGIRRFSPF ADLSELSATG RNLQVSRVLQ RTVIEVDERG TEAVAGILSE ITAYSMPPVI KVDRPFHFI YEETSGMLLF LGRVVNPTLL
Isotype:	IgG
Cross-Reactivity:	Human, Mouse, Rat
Characteristics:	Polyclonal Antibodies

## Target Details

---

Target:	SERPINA10
Alternative Name:	SERPINA10 ( <a href="#">SERPINA10 Products</a> )
Background:	<p>The protein encoded by this gene belongs to the serpin family. It is predominantly expressed in the liver and secreted in plasma. It inhibits the activity of coagulation factors Xa and XIa in the presence of protein Z, calcium and phospholipid. Mutations in this gene are associated with venous thrombosis. Alternatively spliced transcript variants have been found for this gene.,SERPINA10,PZI,ZPI,Cell Biology &amp; Developmental Biology,Ubiquitin,Cardiovascular,Blood,Serum Proteins,SERPINA10</p>
Molecular Weight:	50 kDa
Gene ID:	51156
UniProt:	<a href="#">Q9UK55</a>

## Application Details

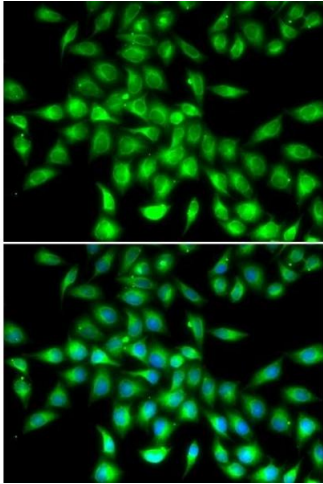
---

Application Notes:	WB,1:500 - 1:2000,IF,1:20 - 1:100
Restrictions:	For Research Use only

## Handling

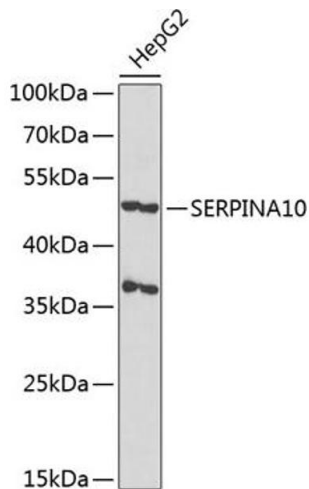
---

Buffer:	PBS with 0.02 % sodium azide,50 % glycerol, pH 7.3.
Preservative:	Sodium azide
Precaution of Use:	This product contains Sodium azide: a POISONOUS AND HAZARDOUS SUBSTANCE which should be handled by trained staff only.
Storage:	-20 °C
Storage Comment:	Store at -20°C. Avoid freeze / thaw cycles.



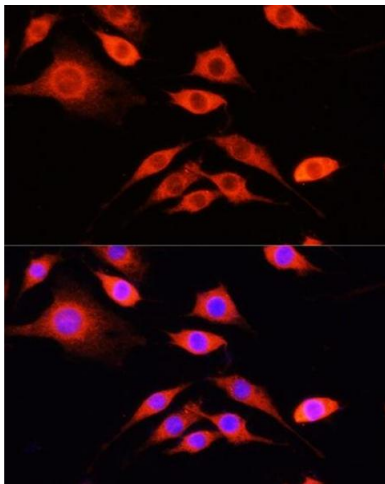
### Immunofluorescence

**Image 1.** Immunofluorescence analysis of cells using SERPIN antibody . Blue: DAPI for nuclear staining.



### Western Blotting

**Image 2.** Western blot analysis of extracts of HepG2 cells, using SERPIN antibody at 1:1000 dilution. Secondary antibody: HRP Goat Anti-Rabbit IgG (H+L) (ABIN1684268 and ABIN3020597) at 1:10000 dilution. Lysates/proteins: 25 µg per lane. Blocking buffer: 3% nonfat dry milk in TBST. Detection: ECL Basic Kit (RM00020). Exposure time: 120s.



### Immunofluorescence

**Image 3.** Immunofluorescence analysis of PC-12 cells using SERPIN antibody at dilution of 1:100 (40x lens). Blue: DAPI for nuclear staining.