



[Go to Product page](#)

Datasheet for ABIN1682666
anti-SETD2 antibody (AA 803-1103)

10 Images

4 Publications

Overview

Quantity:	100 µg
Target:	SETD2
Binding Specificity:	AA 803-1103
Reactivity:	Human
Host:	Rabbit
Clonality:	Polyclonal
Conjugate:	This SETD2 antibody is un-conjugated
Application:	Western Blotting (WB), Immunofluorescence (IF)

Product Details

Immunogen:	Recombinant fusion protein containing a sequence corresponding to amino acids 803-1103 of human SETD2 (NP_054878.5).
Sequence:	SLCNSEAENI EPSVMKISSN SFMNVHLESK PVICDSRNL T D HSKFACEEY KQSIGSTSSA SVNHFDLLYQ PIGSSGIASS LQSLPPGIKV DSLTLLKCGE NTSPVLDAVL KSKKSSEFLK HAGKETIVEV GSDLPSGKG FASRENRNRLN GLSGKCLQEA QEEGNSILPE RRRGRPEISLD EREGEGHVHT SDDSEVVFSS CDLNLTMEDS DGVTYALKCD SSGHAPEIVS TVHEDYSGSS ESSNDESDSE DTSDSSIP RNRLQSVVVV PKNSTLPMEE TSPCSSRSSQ SYRHYS DHWE D
Isotype:	IgG
Cross-Reactivity:	Human, Mouse, Rat
Characteristics:	Polyclonal Antibodies

Target Details

Target: SETD2

Alternative Name: SETD2 ([SETD2 Products](#))

Background: Huntington's disease (HD), a neurodegenerative disorder characterized by loss of striatal neurons, is caused by an expansion of a polyglutamine tract in the HD protein huntingtin. This gene encodes a protein belonging to a class of huntingtin interacting proteins characterized by WW motifs. This protein is a histone methyltransferase that is specific for lysine-36 of histone H3, and methylation of this residue is associated with active chromatin. This protein also contains a novel transcriptional activation domain and has been found associated with hyperphosphorylated RNA polymerase II.,SETD2,HBP231,HIF-1,HIP-1,HSPC069,HYPB,KMT3A,LLS,SET2,p231HBP,Epigenetics & Nuclear Signaling,Chromatin Modifying Enzymes,Methylation,SETD2

Molecular Weight: 175 kDa/192 kDa/287 kDa

Gene ID: 29072

UniProt: [Q9BYW2](#)

Pathways: [Tube Formation](#)

Application Details

Application Notes: WB,1:500 - 1:2000,IF,1:50 - 1:200

Restrictions: For Research Use only

Handling

Buffer: PBS with 0.02 % sodium azide,50 % glycerol, pH 7.3.

Preservative: Sodium azide

Precaution of Use: This product contains Sodium azide: a POISONOUS AND HAZARDOUS SUBSTANCE which should be handled by trained staff only.

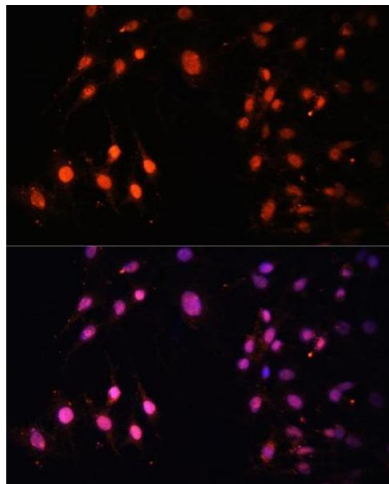
Storage: -20 °C

Storage Comment: Store at -20°C. Avoid freeze / thaw cycles.

Publications

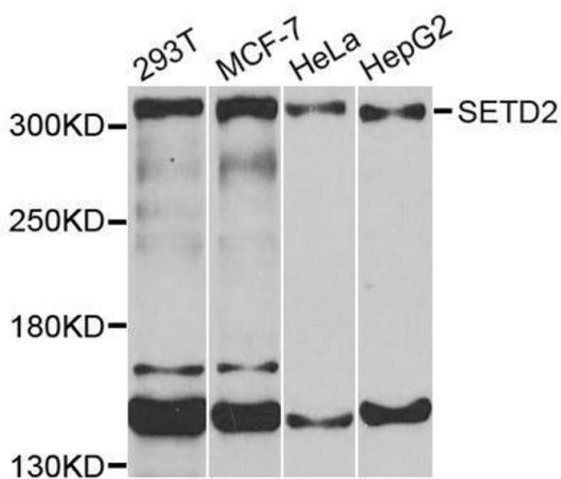
Product cited in: Margarucci, Monti, Cassiano, Mozzicafreddo, Angeletti, Riccio, Tosco, Casapullo: "Chemical proteomics-driven discovery of oleocanthal as an Hsp90 inhibitor." in: **Chemical**

Images



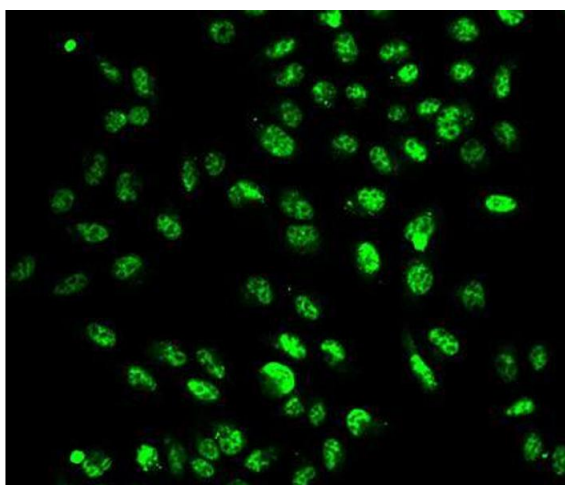
Immunofluorescence

Image 1. Immunofluorescence analysis of C6 cells using SETD2 Polyclonal Antibody (ABIN3017564, ABIN3017565, ABIN1682666 and ABIN6220156) at dilution of 1:100 (40x lens). Blue: DAPI for nuclear staining.



Western Blotting

Image 2. Western blot analysis of extracts of various cells, using SETD2 antibody.



Immunofluorescence

Image 3. Immunofluorescence analysis of A549 cell using SETD2 antibody.

Please check the [product details page](#) for more images. Overall 10 images are available for ABIN1682666.